

# UP-IR200

IR-Illumination kit for UPxx

## Quick Start Guide



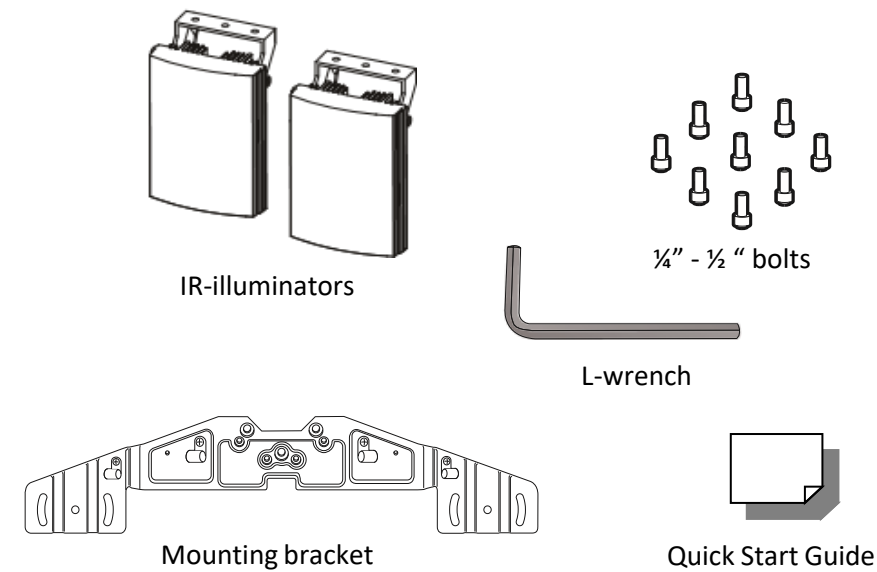
Find additional manuals, the datasheet, the EU Declaration of Conformity, and the latest firmware for this product at:

[tkhsecurity.com](https://tkhsecurity.com)



TKH  
SECURITY

### Unpack



**Note 1:** Subject to modification. Actual product and accessories may differ in appearance.

### Installation Notices



**CAUTION!** IR EMITTED FROM THIS PRODUCT. AVOID EYE EXPOSURE, USE APPROPRIATE SHIELDING OR EYE PROTECTION

SIQURA ACCEPTS NO LIABILITY FOR CLAIMS FROM THIRD PARTIES ARISING FROM IMPROPER USE OTHER THAN THAT STATED IN THIS MANUAL.

INSTALLATION SHALL BE PERFORMED BY QUALIFIED PERSONNEL ONLY.

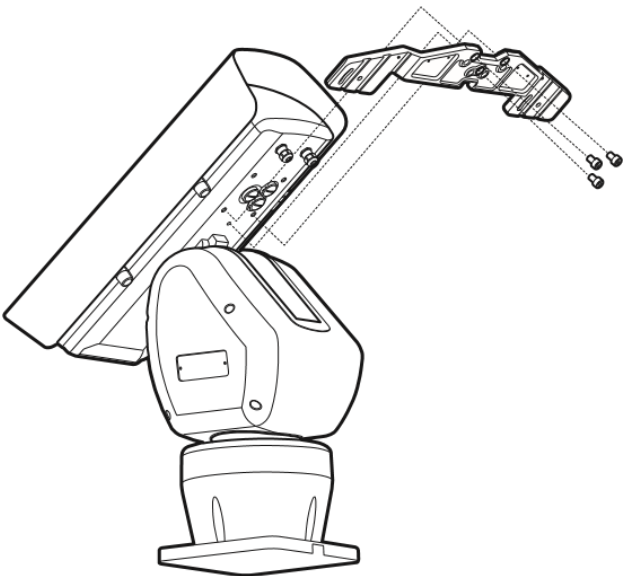
INSTALLATION SHALL BE IN ACCORDANCE WITH LOCAL PROCEDURES.

IF YOU USE AN EXTERNAL POWER SUPPLY, CONTACT SIQURA TO MAKE SURE THAT THE POWER SUPPLY HAS THE PROPER POWER SPECIFICATIONS.

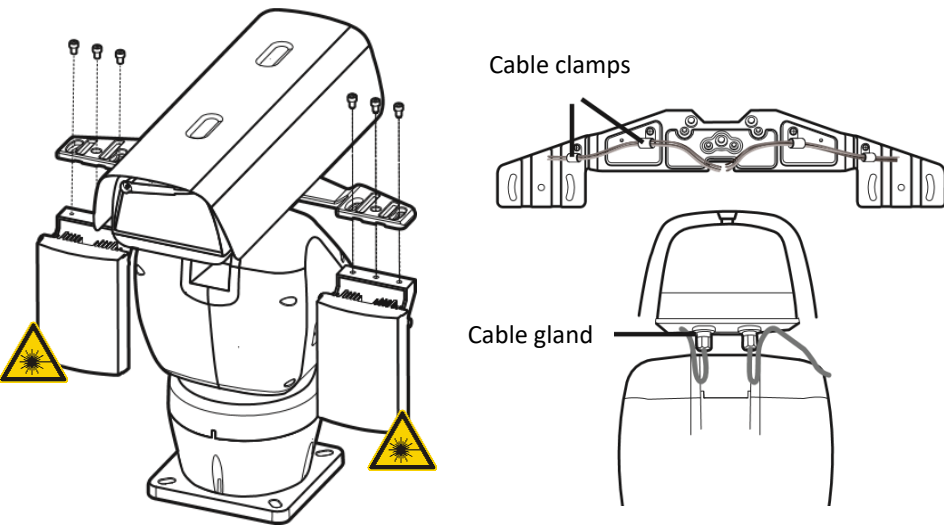
MAKE SURE THAT THE POWER SUPPLY COMPLIES WITH LPS REQUIREMENTS.

FOR MORE INFORMATION, CONTACT SIQURA.

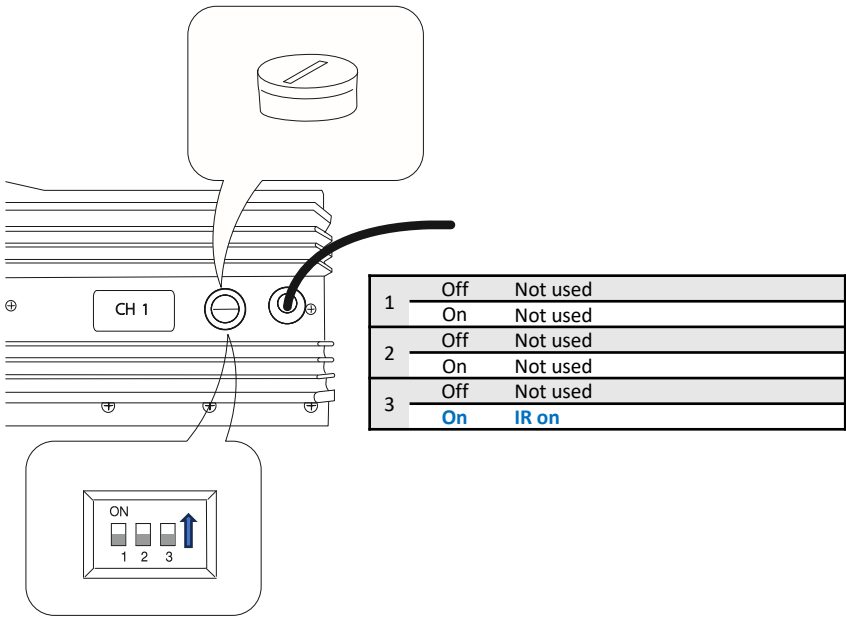
### Mount the bracket to the PT housing



### Mount the IR illuminators and lead the wiring using the clamps into the housing

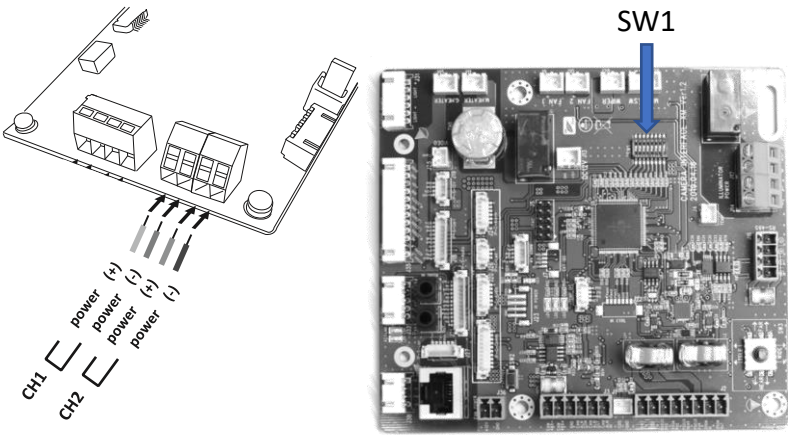


### Configure the IR-Illuminators



(In case there is no DIP switch, no special action is required)

### Connect the wiring and set the PT-housing



Settings SW1 (1100 0011)

1	ON	Reserved
	OFF	
2	ON	Reserved
	OFF	
3	ON	IR RS485 baud rate (9600 baud)
	OFF	
4	ON	
	OFF	

5	ON	Reserved
	OFF	Reserved
6	ON	Reserved
	OFF	Reserved
7	ON	Reserved
	OFF	Reserved
8	ON	Always on
	OFF	Aux 2 control