

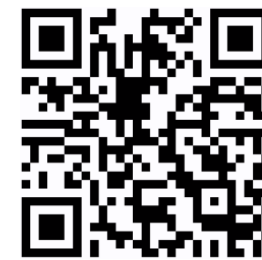
PD5004

4MP IP PTZ Camera

Quick Start Guide



Visit tkhsecurity.com to find the product datasheet, manuals and other documentation, firmware, and regulations. Or scan this QR-code to go to the product's page directly.



Manufacturer information:

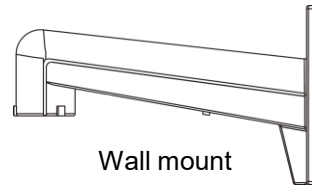
Name: TKH Security B.V.
Address: Werner von Siemensstraat 7,
2712 PN, The Netherlands
Email: info.nl@tkhsecurity.com



Unpack



Camera



Wall mount



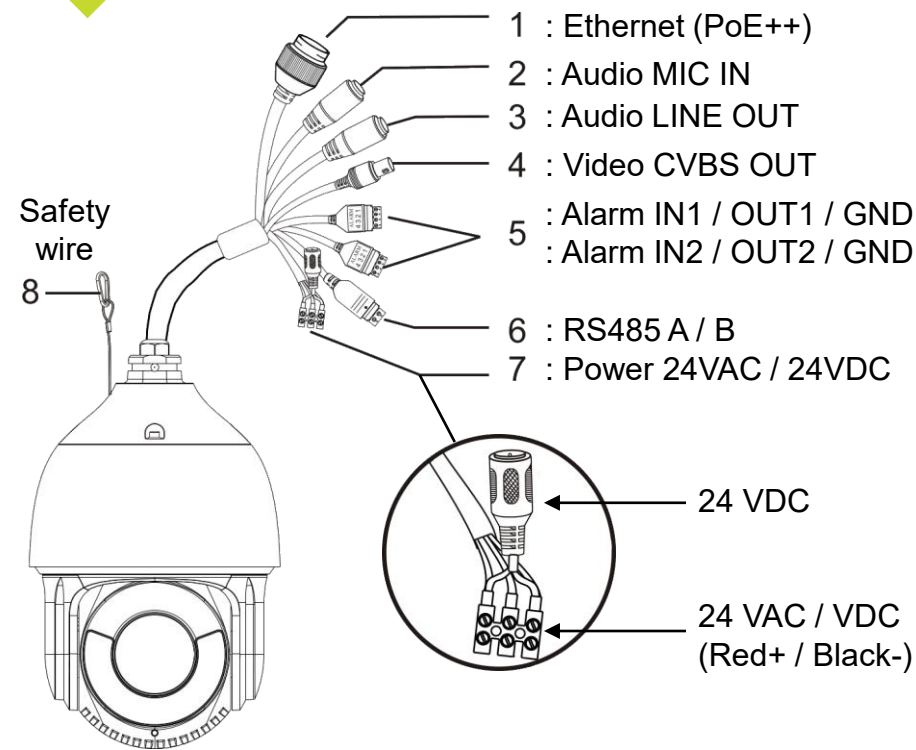
Quick start guide



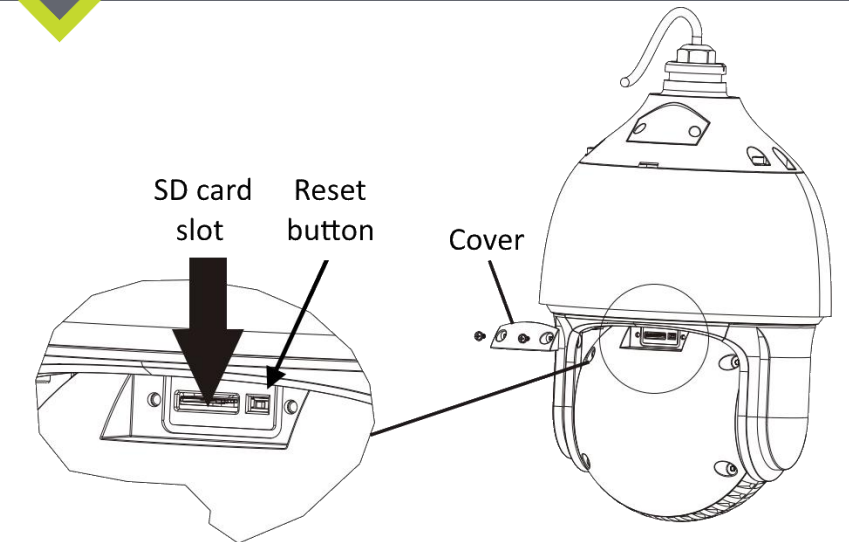
RJ45 insulator

Subject to modification. Actual product and accessories may differ in appearance.

Connectors

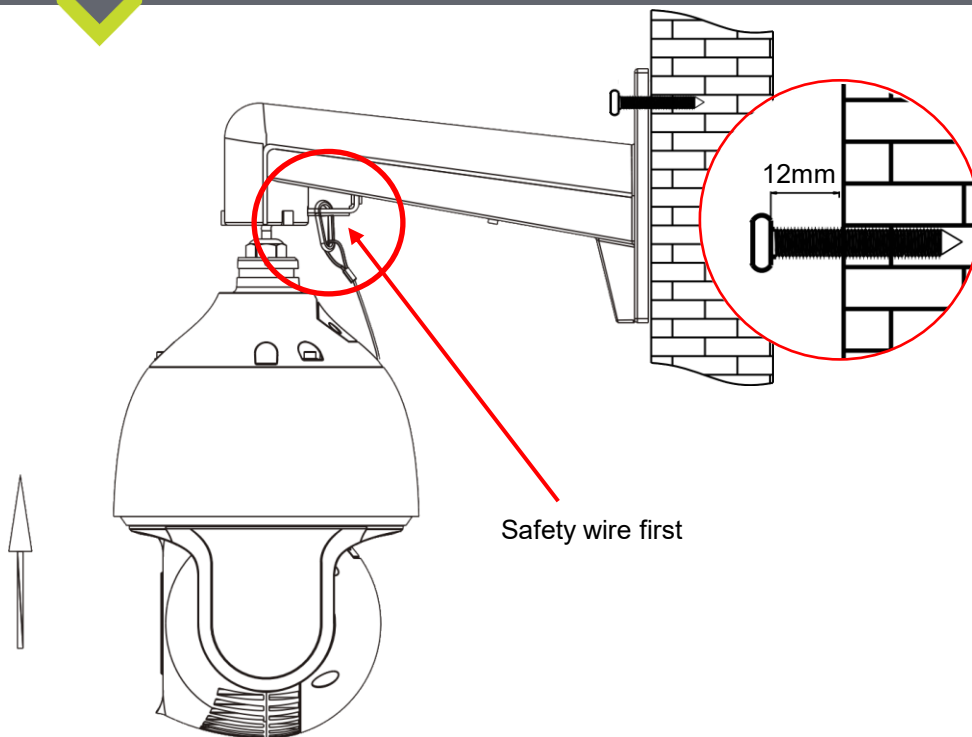


SD card slot / Reset button

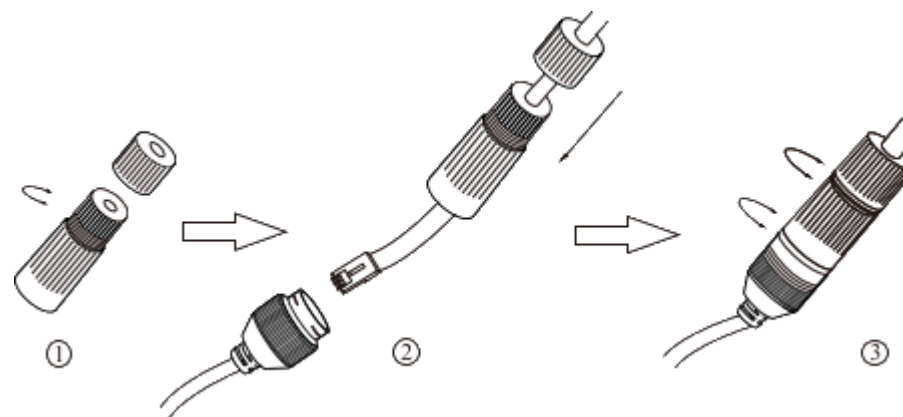


Restore factory default: disconnect the power cord/PoE cable, push and hold the hardware default button with a paperclip, re-insert the power cord/PoE cable, while holding the hardware default button pressed for 30 seconds. The camera will go back to DHCP!

Mounting



Connect network cable



Installation Notices



CAUTION:

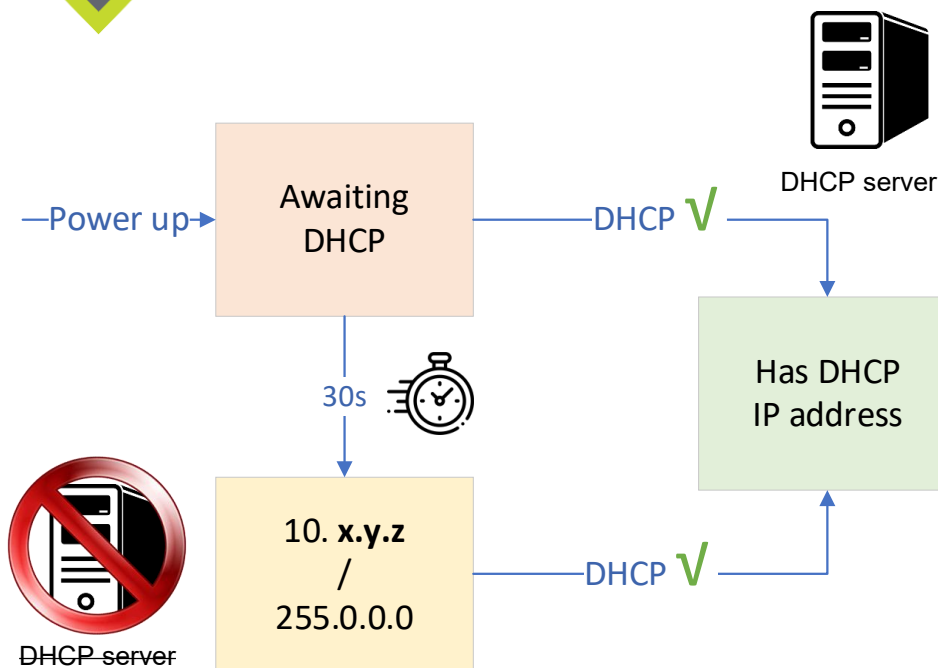
Installation shall be performed by qualified personnel only. Installation shall be in accordance with local procedures. Installation with PoE shall be in unexposed networks. Battery replacement shall not be applied in view of the risk of explosion. If you use an external power supply, contact TKH Security to make sure that the power supply has the proper power specifications. Make sure that the power supply complies with LPS requirements. When installing the camera, hook up the camera with the anti-drop chain of the pendant to the anti-drop ring. For more information, visit us at tkhsecurity.com.



WARNING:

For "PoE" input connection, use only with UL listed I.T.E with "PoE" output. Description for the "PoE" is intended to be connected to not exposed (outside plant) networks or equivalent statement in installation instructions. This device conforms to the Hi-PoE standard.

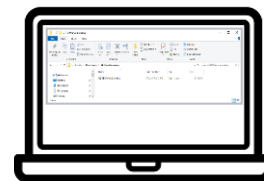
Default IP addressing



10. x.y.z use the **FindMy5000SeriesDefaultIP** tool (part of SDM2 Device Manager software) to find the camera's unique factory default IP address.

Acquire SDM2 Device Manager

<https://khsecurity.com>> Products> Services> Knowledge Base> Support Software> SDM2 Device Manager :



Install using Setup installer or Unzip the Portable zip file

Auto detect with SDM2

Address	Name	Model	MAC Address	Status
10.6.131.82	UP33	UP33		Online
10.79.11.181	UP33 1stFloor	BC822v2H3		Online
10.79.11.182	BC980v2H2	BC980v2H2		Online
10.79.11.184	FD2024F			Online
10.79.11.185	FD5006M(2)	FD5006M(2)		Online
10.79.11.186	BL5006M(2)	BL5006M(2)		Online
10.79.11.187	PD950	PD950		Online
10.79.11.188	BC840v2-661187	BC840v2		Online
10.79.11.189	PD5004(2)	PD5004(2)		Online
10.79.11.193	BC950	BC950		Online
10.79.11.194	FE5012(P1)	FE5012(P1)		Online
10.79.30.123	BL2002v2M	BL2002v2M		Online

Online | Auto detection is Disabled | Device list has 12 devices | Script not running

1

SDM2 auto detects the new device, typically. But you must connect manually using Connect function.

2

If SDM2 fails to auto detect, either manual scan for it, or change your network adapter settings accordingly.

1st time camera login

Security Question

⚠ It is recommended to set security questions and answers. When forgetting the password, you can reset it through the set security questions and answers. If you don't set them, you need to restore the IPC to the factory default settings, or you cannot use it.

Security Question1: Your seniors school name?

Answer:

Security Question2: Your juniors school name?

Answer:

Security Question3: Your birthplace?

Answer:

Skip Back Next

1st time camera login

Device Activation

User Name: admin

☒ Activate Onvif User

New Password:

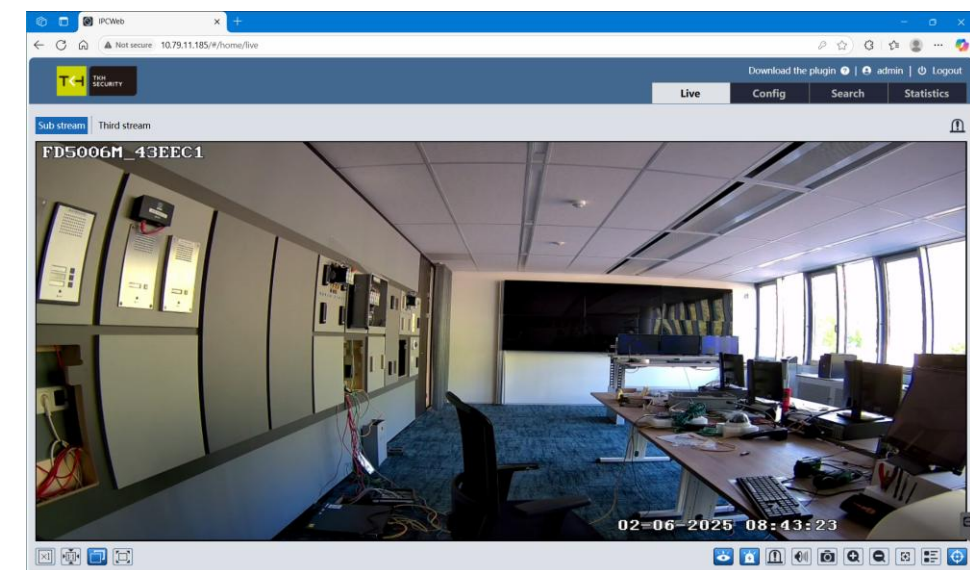
8~16 characters; Numbers, special characters, upper case letters and lower case letters must be included.

Confirm Password:

8~16 characters; Numbers, special characters, upper case letters and lower case letters must be included.

Back Save

Browser-based Viewer



It is not recommended to continuously (24/7) record with the micro-SD card, as the camera may not support long-term continuous data read/write. Contact the manufacturer of the micro-SD card for information regarding the reliability and the life expectancy.