

# PD1022v2

## 2MP Network PTZ Dome Camera

### Quick Start Guide

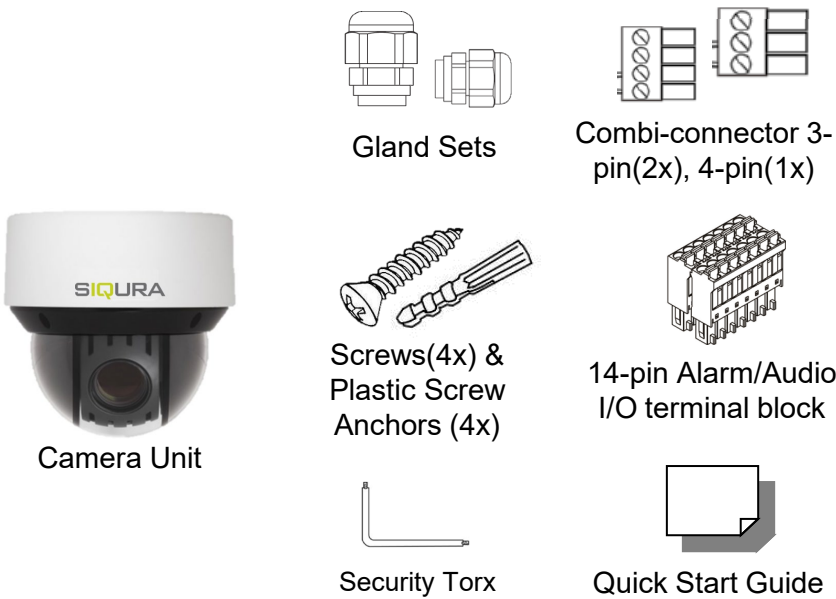


Find additional manuals, the datasheet, the EU Declaration of Conformity, and the latest firmware for this product at:

[tkhsecurity.com](http://tkhsecurity.com)



### Unpack



Subject to modification. Actual product and accessories may differ in appearance.

### Installation Notices



Caution installation shall be performed by qualified personnel only. Installation shall be in accordance with local procedures. The camera contains batteries.

Battery replacement shall not be applied in view of the risk of explosion. Dispose of used batteries according to the instructions.

For "PoE" input connection, use only with UL listed I.T.E. with "PoE" output. Description for the "PoE" is intended to be connected to not exposed (outside plant) networks or equivalent statement in installation instructions.

### Connectors

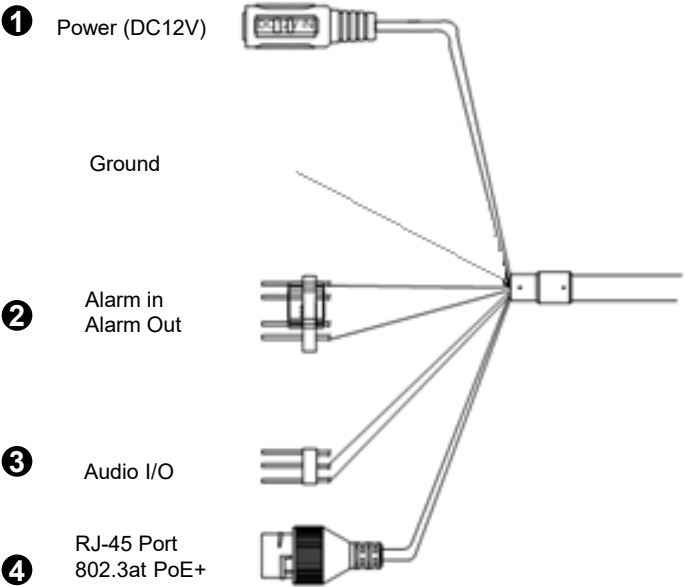
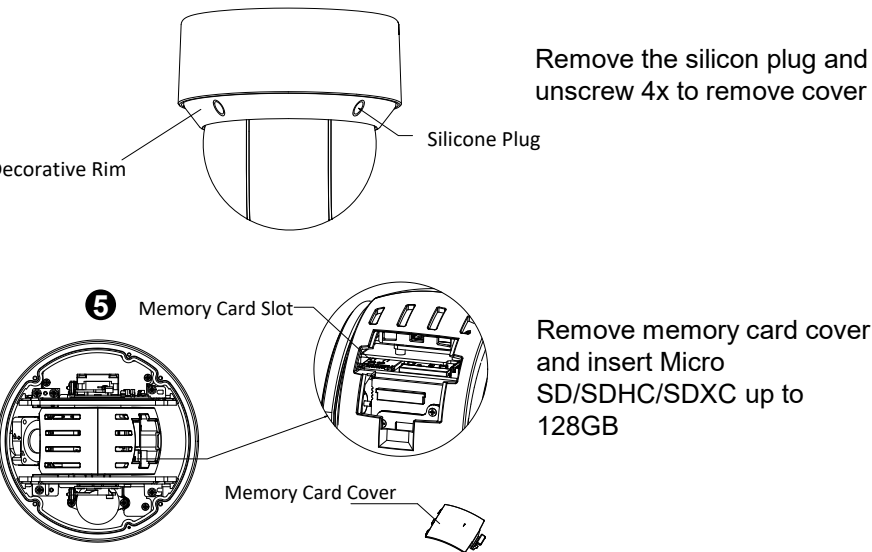


Figure 1 Camera Connectors

### SD Card & Default



### Default Button

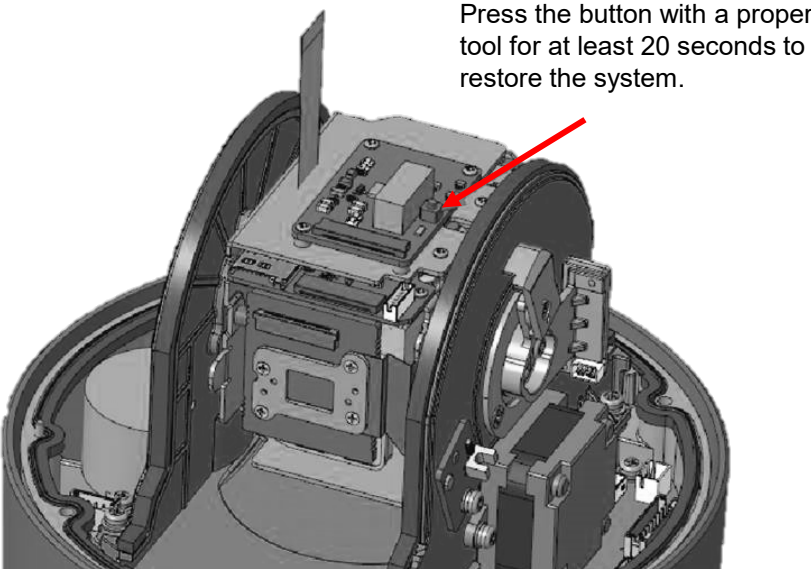


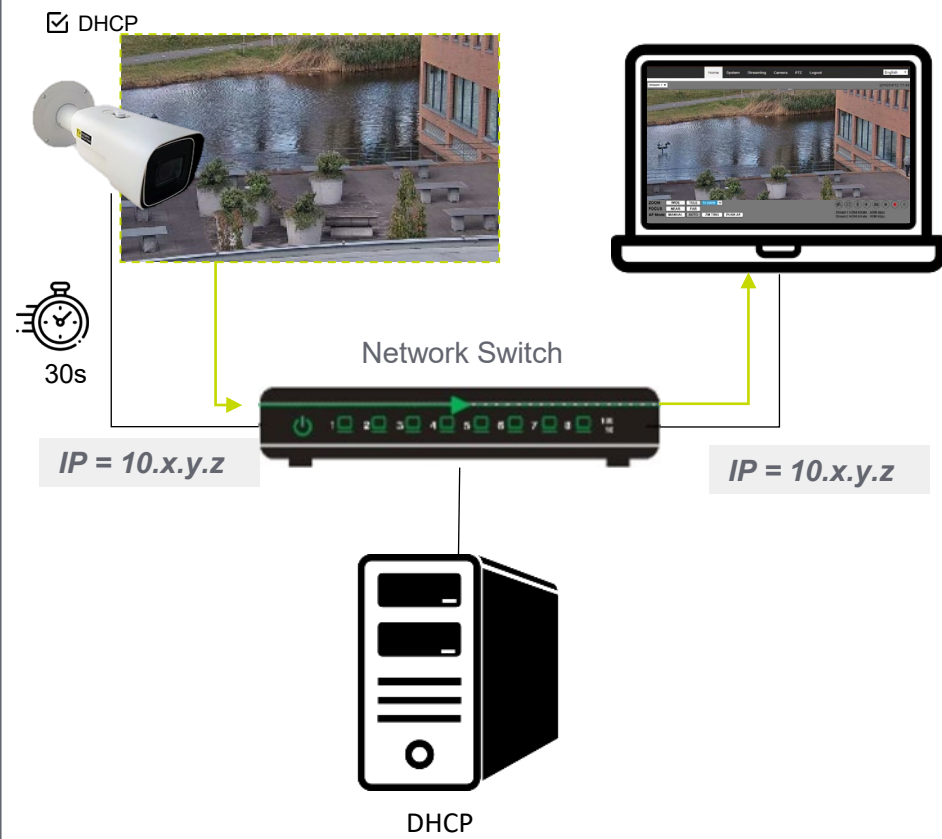
Figure 3 – Position of default button

### Camera Cabling

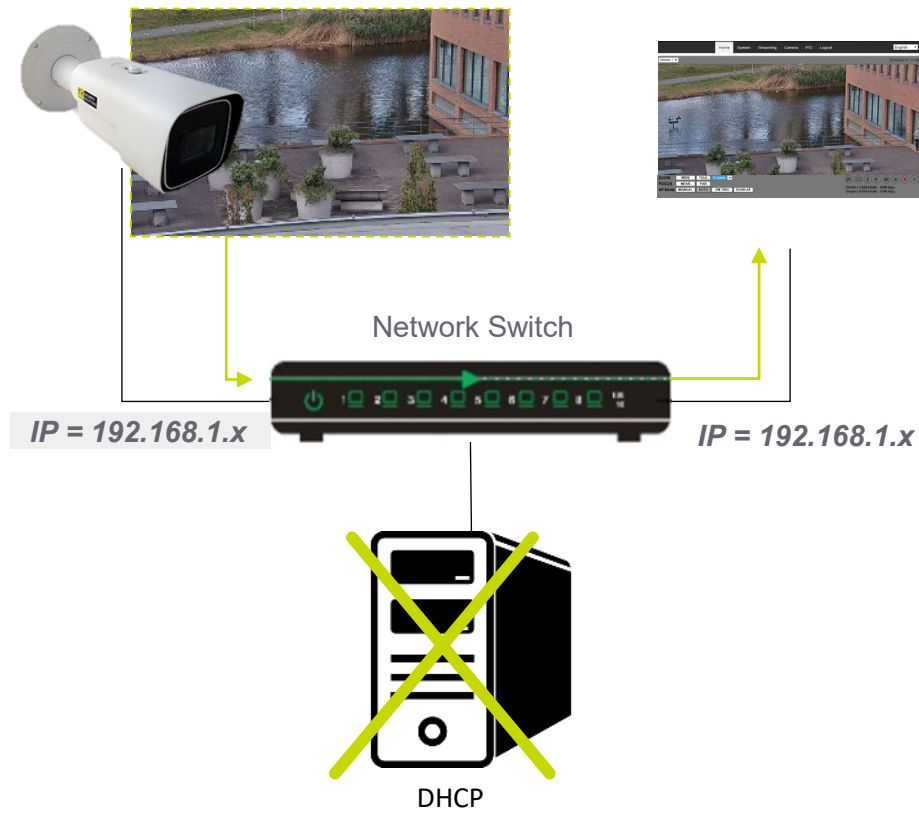
No.	Connector	Definition
1	Alarm I/O	Alarm I/O connection
2	Audio I/O	Line In and Line Out connection
3	RJ-45 Port (Contact Siqua for a compatible PoE injector.)	For network and PoE connections
4	Power(DC 12V)	Power Connection
5	Reset Button	To restore camera to factory defaults, power up with Reset button pressed for at least 10s.
6	Micro SD Card Slot	Insert the SD card into the card slot to store videos and snapshots. Do not remove the SD card when the camera is powered on.

Table 1 Connector definition

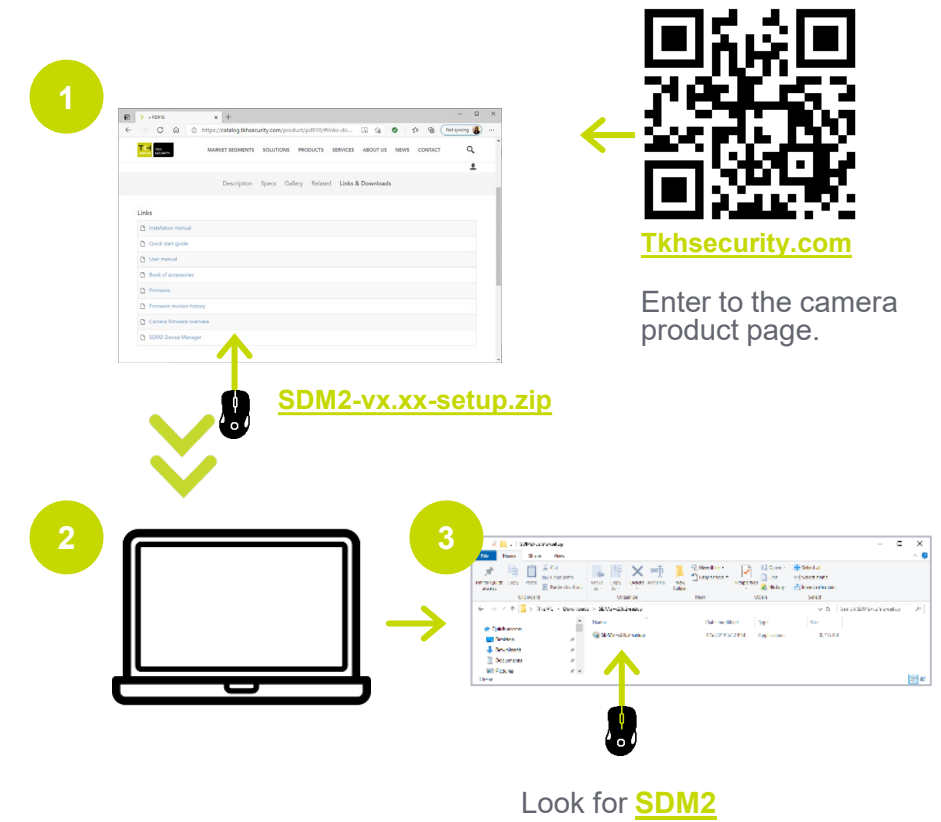
## Accessing the Camera - DHCP



## Accessing the camera – Fixed IP



## Auto detect with SDM2



## 1<sup>st</sup> time camera login

Set a strong password

Activation

User Name admin

Password

Valid password range [8-16]. You can use a combination of numbers, lowercase, uppercase and special character for your password with at least two kinds of them contained.

Confirm

OK

qwer1234



x6W@oM0a!9#F



## 1<sup>st</sup> time camera login

SIQURA

User Name

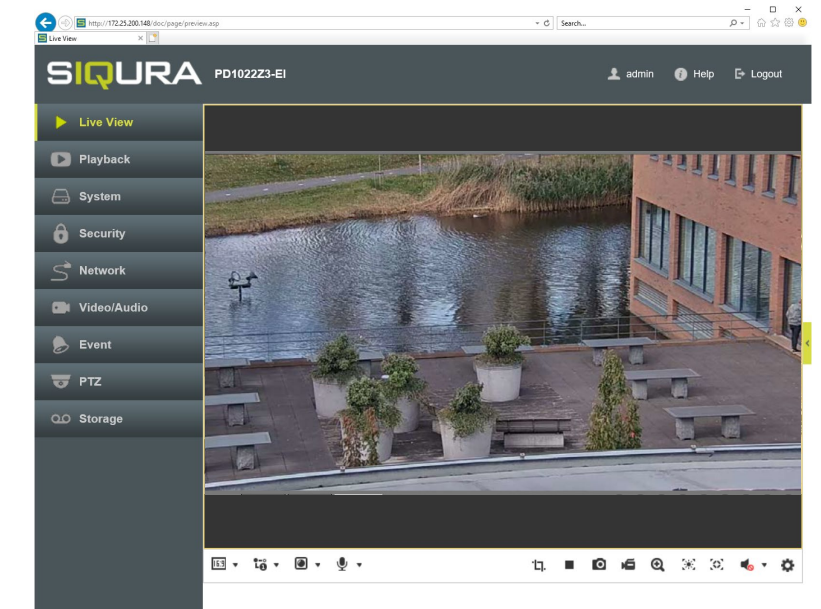
Password

Language English

Login

[Forgot password?](#)

## Browser-based Viewer



It is not recommended to continuously (24/7) record with the micro-SD card, as the camera may not support long-term continuous data read/write. Contact the manufacturer of the micro-SD card for information regarding the reliability and the life expectancy.