

Siquira HSD820 Series

High-speed 1080p PTZ dome camera series

Quick Start Guide

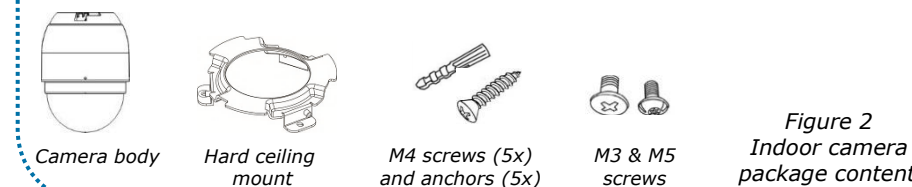
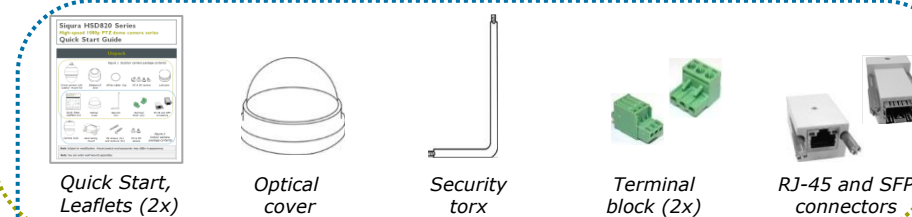
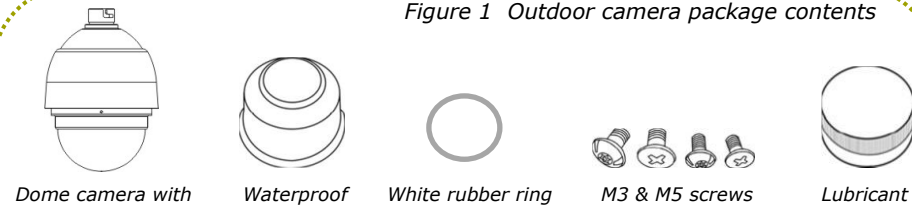


Find additional manuals for this Siquira product at: www.siquira.com/support-files



Unpack

Figure 1 Outdoor camera package contents



Note: Subject to modification. Actual product and accessories may differ in appearance.

Note: You can order wall mounts separately.

Switches and connectors

To wire the camera, use the images showing the positions of the switches and connectors (below) and the cable pin definition diagrams (next section).

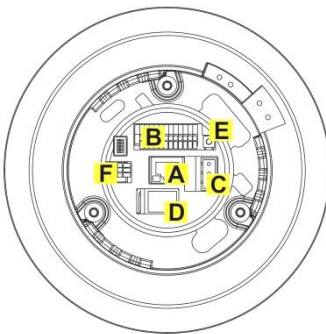


Figure 3 Indoor model

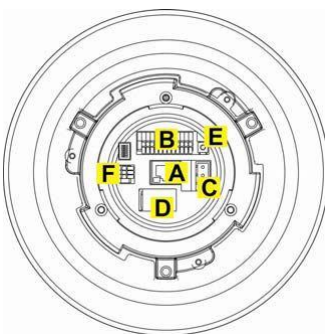


Figure 4 Outdoor model

Connector	Definition
A	RJ-45 / SFP connector
B	Alarm I/O and analogue video out (BNC output on pins 9 and 10)
C	Power
D	Micro-SD Card Slot
E	Factory reset button
F	Audio I/O

See accompanying leaflets:

"Install the HSD820H2/H3 network connector" and "Safety Instructions"

Table 1 Connector definition

Outdoor camera mounting requirements

Use one of two types of Siquira mounts to install an outdoor HSD820 on a wall:

- WM01A Mini Wall Mount
- WM07 Long Wall Mount



Figure 5 WM01A Mini Wall Mount



Figure 6 WM07 Long Wall Mount

The mini wall mount and the long wall mount can be installed onto a box mount if extra space for the cables is required.



Figure 7 WM06 Wall Box Mount

Outdoor installation requires the following items:

- Dome camera
- Supplied waterproof boot
- Wall mount (optional accessory)
- Screws and screw anchors
- Screwdriver and drill

Prepare outdoor camera for installation

To prepare the HSD820 for installation

- Remove the outdoor tube adaptor by rotating counter clockwise (figure 8a).
- Rotate to remove the protective cover.
- Make a note of the IP address on the label attached to the cylindrical heat sink.
- Remove the PE cloth and take off the lens cap.
- Generously apply the supplied lubricant to the optical cover's waterproof boot to ensure an IP66 quality installation (figure 8b).
- Loosen the screw head alignment pins on the dome cover by turning clockwise and line up the alignment pin and screws on the optical cover with the holes in the dome body.
- Attach the optical cover to the dome body by pressing gently down on the sides of the dome cover (figure 8c).
- Turn the screw head alignment pins counter-clockwise with a suitable screwdriver to lock the dome into place and secure the dome with the included Phillips-head or TORX screw.



Figure 8a/b/c Remove the outdoor tube adaptor (left). Lubricate the optical cover's waterproof boot (centre). Attach the optical cover to the dome body (right).

Connector pin definition

It is necessary to configure the power, alarms, and audio before connecting the dome camera to other devices. The switches used for configuring these settings are located on the bottom of the camera. The indoor and outdoor models have slightly different configurations, but these connectors are in approximately the same place on each camera.

Connect the power core through the supplied power adapter.

Use the pin definition below to set up audio.

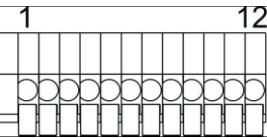
Pin	Definition
1	AC 24_1
2	FG
3	AC 24_2

Table 2 Connector C - Power

Pin	Definition
3	LINE_IN
2	GND
1	LINE_OUT

Table 3 Connector F - Audio

Use the pin definition on the right to set up Alarm I/O.



Pin	Definition	Pin	Definition
1	ALARM_OUT_NO_1	7	ALARM_OUT_COM_2
2	ALARM_OUT_NC_1	8	GND
3	ALARM_OUT_COM_1	9	VIDEO_GND
4	GND	10	VIDEO_OUT
5	ALARM_OUT_NO_2	11	ALARM_IN_2
6	ALARM_OUT_NC_2	12	ALARM_IN_1

Table 4 Connector B - Alarm I/O

Install outdoor camera with wall mount

Installation requires the following tools:

- Dome camera
- Supplied waterproof boot
- Wall mount
- Screws and screw anchors
- Screwdriver and drill

Figure 9 Mini wall mount



To mount the outdoor HSD820 with a wall mount

- Make a hole in the wall or metal access plate for the cables and secure the supplied cable gland in the wall.
- Ensure that the weather resistant gasket is correctly attached to the mount.
- Thread the cables through the wall mount and screw it onto the wall.
- Attach the waterproof boot to the wall mount.
- Thread the cables through the outdoor tube adaptor and fix it to the wall mount with the supplied screws and washers.
- Clip the safety wire to the dome camera.
- To keep insects out, block the cable entry hole with the supplied sponge.
- Connect the cables to the dome camera.
- Attach the dome to the outdoor tube adaptor and fasten them together with the supplied screws.



CAUTION: FULLY TORQUE DOWN THE MOUNTING BOLT THAT ATTACHES THE WM02 TUBE ADAPTER TO THE MOUNTING BRACKET TO PREVENT ANY MOVEMENT OF THE CAMERA DUE TO WIND, VIBRATION, ETC. MAKE SURE THE CAMERA CANNOT MOVE AT ALL IN ITS BRACKET AFTER INSTALLATION. ANY MOVEMENT OF THE CAMERA IN ITS BRACKET CAN COMPROMISE POSITIONAL ACCURACY.

Log on to the camera

You can access the camera settings via its web interface.

Use Internet Explorer 6.x or higher, Chrome, Firefox or Safari to browse the webpages.

To open communication with the camera

1. Make an IP connection between the camera and the PC.
To achieve initial access, the network adapter of the PC must be set to the same subnet as the camera. The factory-set IP address is printed on a label located on the bottom of the camera.
2. Type the IP address of the camera in the address bar of your web browser (figure 10), and then click ENTER.
3. Enter the default user name (Admin) and password (1234).
Note that the user name is case sensitive.
4. When prompted about an ActiveX control installation, right-click the information bar, and then click **Install ActiveX control**.
This installs Siqura Viewer, an add-on required to view camera images in the webpages. Make sure that ActiveX controls are enabled in your web browser. For more information, see the User Manual.



Figure 10 Enter the IP address of the camera into the address bar of your browser



CAUTION: MAKE SURE THAT YOU CHANGE THE DEFAULT ADMIN PASSWORD AT THE FIRST LOGIN. TO KEEP THE ACCOUNT SAFE, CREATE A STRONG, COMPLEX PASSWORD. THIS HELPS TO PREVENT UNAUTHORIZED ACCESS FROM PEOPLE WHO TRY TO USE THE DEFAULT ACCOUNT.

Install Siqura Device Manager (optional)



Figure 11

Download Siqura Device Manager at <http://www.siqura.com/support-files>
Install the software on the browsing PC.

Access a camera with Siqura Device Manager

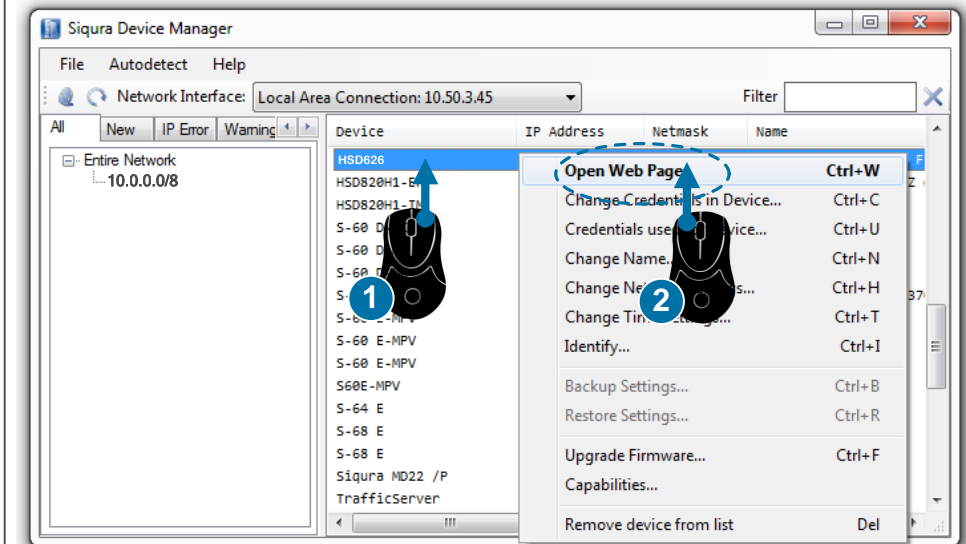


Figure 12 Use Siqura Device Manager to open the webpages of the camera

Change network settings

With Siqura Device Manager you can directly change the network settings of the camera.

To change the network settings

1. Right-click the camera in Siqura Device Manager.
2. Click **Change Network Settings**.
3. Click **Enable DHCP**.
- or -
click **Static IP**, and then enter the new IP address, subnet mask, and gateway address.
4. Click **OK**.

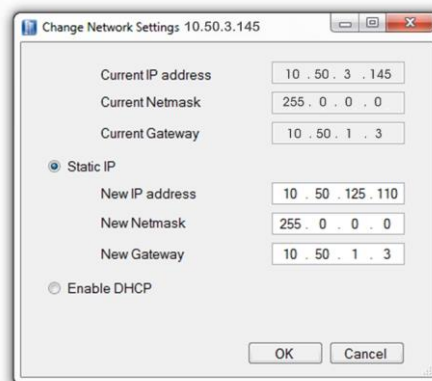


Figure 13 Change network settings

Note: A DHCP server must be installed on the network in order to apply DHCP network support.

You can also change these settings on the Network webpage of the camera. For more information, see the User Manual.

Navigate the webpages

Use the menus across the top of the home page to navigate the webpages.

- **Home** – Live video stream, PTZ control, video recording, and snapshots.
- **System** – Host name, system time, root password, and other network settings.
- **Streaming** – Video/audio formats and compression parameters.
- **PTZ&IMAGE** – Exposure, white balance, brightness, sharpness, contrast, and digital zoom.
- **Logout** – Log out and reopen the Login page.

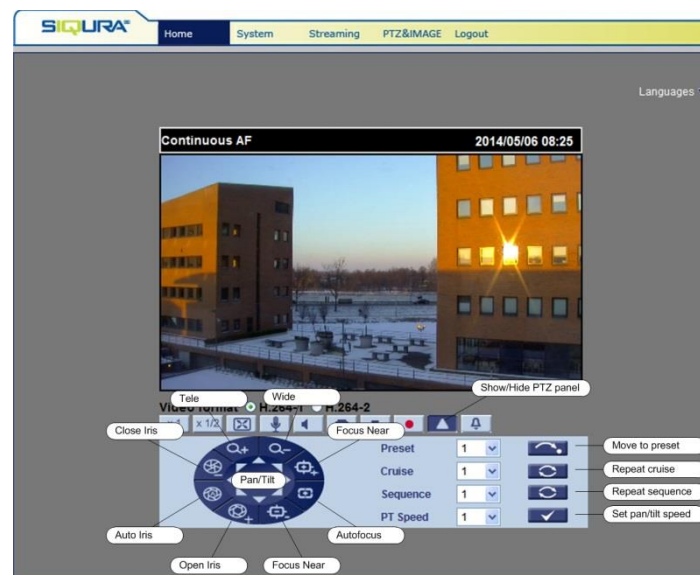


Figure 14 Home page with PTZ panel

View video stream in video player (VLC)

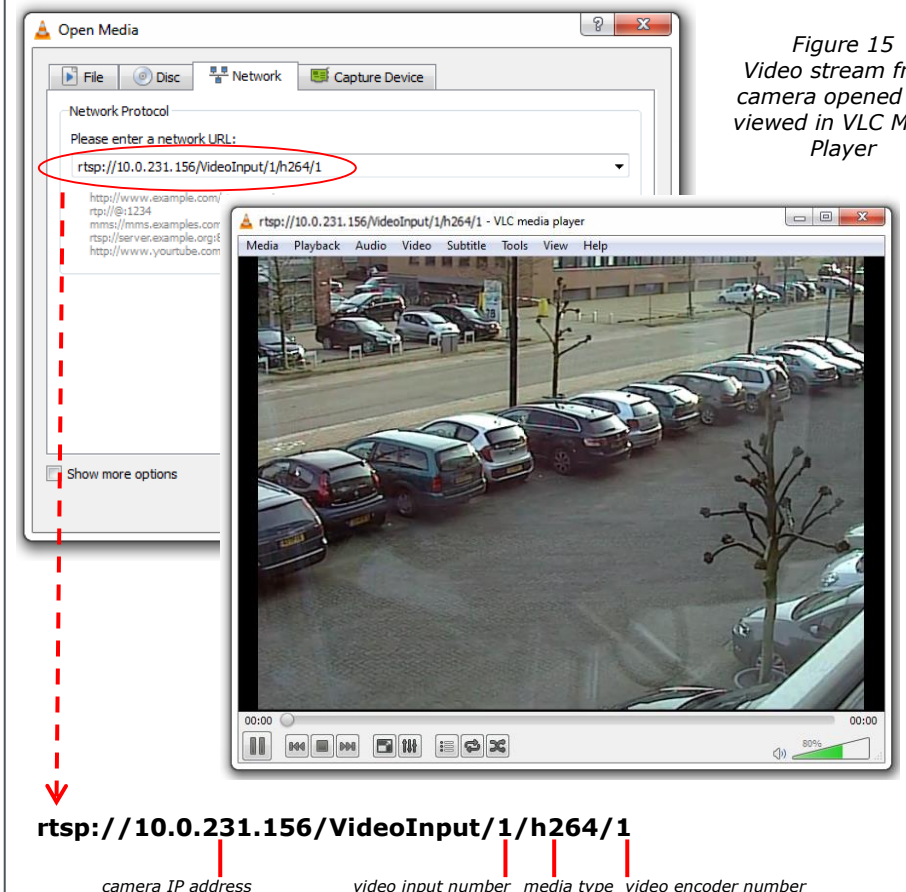


Figure 15
Video stream from
camera opened and
viewed in VLC Media
Player