

Siquira HSD820H3PRH

Pressurised IP PTZ dome camera; 30x zoom

Quick Start Guide



Find additional manuals for this Siquira product at: www.siquira.com/support-files



Unpack



Dome camera



Quick Start Guide

Figure 1 HSD820H3PRH package contents

Note: Subject to modification. Actual product and accessories may differ in appearance.

Note: You can order wall mounts separately.

Connect

Connect the cables as shown below.

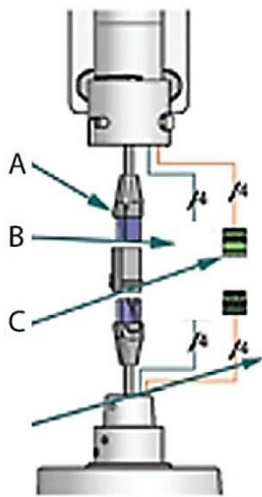


Figure 2 Cable connectors

A

RJ-45

B

Alarm input

1	Alarm 1	Red White
4	Common	Brown

C

24 Vac

1	Camera	Black	75 W
3	Camera	Red	

POWER

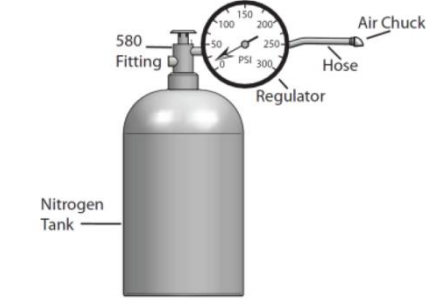
Pressurise

The HSD820H3PRH is not pressurised at the factory.

Complete the steps below to pressurise the camera before installation.

Step 1

Set the gauge or regulator from 10 to 20 psi (.7 to 1.4 bar).



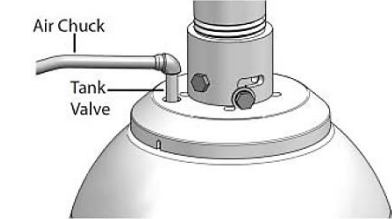
Step 3

Open the relief valve. Drain all air from the housing and repeat three times to remove all moisture.



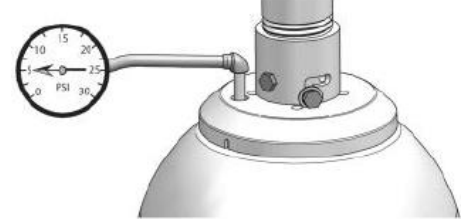
Step 2

Place the air chuck on the tank valve and begin filling until the pressure relief valve opens.



Step 4

After purging check the housing pressure. It should be around 5 psi (.34bar).



Mounting requirements

Use one of two types of Siquira mounts to install the camera on a wall:

- WM01A Mini Wall Mount
- WM07 Long Wall Mount



Figure 3 WM01A Mini Wall Mount



Figure 4 WM07 Long Wall Mount

The mini wall mount and the long wall mount can be installed onto a box mount if extra space for the cables is required.



Figure 5 WM06 Wall Box Mount

Outdoor installation requires the following items:

- Dome camera
- Supplied waterproof boot
- Wall mount (optional accessory)
- Screws and screw anchors
- Screwdriver and drill

Install with wall mount

To mount the camera with a wall mount

- Make a hole in the wall or metal access plate for the cables and secure the supplied cable gland in the wall.
- Ensure that the weather resistant gasket is correctly attached to the mount.
- Thread the cables through the wall mount and screw it onto the wall.
- Attach the waterproof boot to the wall mount.
- Thread the cables through the outdoor tube adaptor and fix it to the wall mount with the supplied screws and washers.
- Clip the safety wire to the dome camera.
- To keep insects out, block the cable entry hole with the supplied sponge.
- Connect the cables to the dome camera.
- Attach the dome to the outdoor tube adaptor and fasten them together with the supplied screws.



CAUTION: FULLY TORQUE DOWN THE MOUNTING BOLT THAT ATTACHES THE WM02 TUBE ADAPTER TO THE MOUNTING BRACKET TO PREVENT ANY MOVEMENT OF THE CAMERA DUE TO WIND, VIBRATION, ETC. MAKE SURE THE CAMERA CANNOT MOVE AT ALL IN ITS BRACKET AFTER INSTALLATION. ANY MOVEMENT OF THE CAMERA IN ITS BRACKET CAN COMPROMISE POSITIONAL ACCURACY.



Figure 6 Mini wall mount

Install with ceiling mount

One ceiling mount is available for the HSD820H3PRH: the straight tube mount.

Installation requires the following items:

- Dome camera
- Straight tube and other equipped items (optional accessory)
- Screws and screw anchors for fixing the straight tube onto the ceiling (not supplied)
- Screwdriver and drill

To mount the camera with a straight tube

- Make sure that the ceiling can support the weight of the dome camera and straight tube.
- Make a cable entry hole in the ceiling. Otherwise, cables can be threaded through the cable entry hole on the tube.
- Attach the waterproof boot to the straight tube.
- Fix the straight tube to the ceiling with proper screws and screw anchors (not supplied).
- Thread the cables through the straight tube and the tube adapter.
- After threading the cables, block the cable entry hole with the supplied sponge(s) to prevent insects from entering the tube.
- Fix the outdoor tube adapter to the straight tube with the supplied screws and washers.
- Adjust the waterproof boot to the junction of the straight tube and the outdoor tube adapter.
- Connect the cables to the dome camera.
- Attach the dome to the outdoor tube adapter and fix them with the supplied screw.

Log on to the camera

You can access the camera settings via its web interface.

Use Internet Explorer to browse the webpages.

To open communication with the camera

1. Make an IP connection between the camera and the PC.
To achieve initial access, the network adapter of the PC must be set to the same subnet as the camera. The factory-set IP address is printed on a label located on the bottom of the camera.
2. Type the IP address of the camera in the address bar of your web browser (figure 7), and then click ENTER.
3. Enter the default user name (Admin) and password (1234).
Note that the user name is case sensitive.
4. When prompted about an ActiveX control installation, right-click the information bar, and then click **Install ActiveX control**.
This installs Siqura Viewer, an add-on required to view camera images in the webpages. Make sure that ActiveX controls are enabled in your web browser. For more information, see the User Manual.



Figure 7 Enter the IP address of the camera into the address bar of your browser



CAUTION: MAKE SURE THAT YOU CHANGE THE DEFAULT ADMIN PASSWORD AT THE FIRST LOGIN. TO KEEP THE ACCOUNT SAFE, CREATE A STRONG, COMPLEX PASSWORD. THIS HELPS TO PREVENT UNAUTHORISED ACCESS FROM PEOPLE WHO TRY TO USE THE DEFAULT ACCOUNT.

Install Siqura Device Manager (optional)



Figure 8

Download Siqura Device Manager at <http://www.siqura.com/support-files>
Install the software on the browsing PC.

Access a camera with Siqura Device Manager

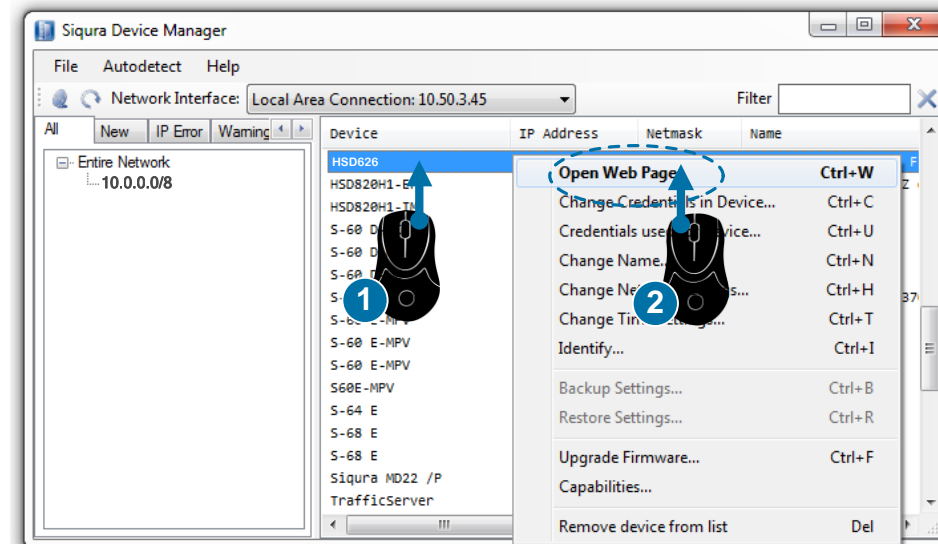


Figure 9 Use Siqura Device Manager to open the webpages of the camera

Change network settings

With Siqura Device Manager you can directly change the network settings of the camera.

To change the network settings

1. Right-click the camera in Siqura Device Manager.
2. Click **Change Network Settings**.
3. Click **Enable DHCP**.
- or -
click **Static IP**, and then enter the new IP address, subnet mask, and gateway address.
4. Click **OK**.

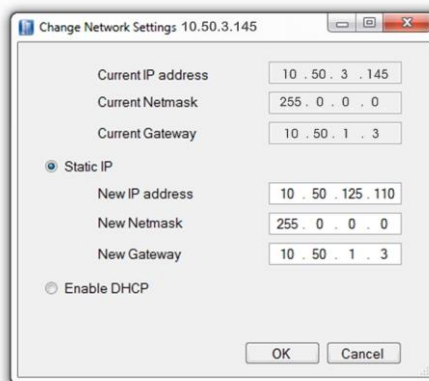


Figure 10 Change network settings

Note: A DHCP server must be installed on the network in order to apply DHCP network support.

You can also change these settings on the Network webpage of the camera. For more information, see the User Manual.

Navigate the webpages

Use the menus across the top of the home page to navigate the webpages.

- **Home** – Live video stream, PTZ control, video recording, and snapshots.
- **System** – Host name, system time, root password, and other network settings.
- **Streaming** – Video/audio formats and compression parameters.
- **PTZ&IMAGE** – Exposure, white balance, brightness, sharpness, contrast, and digital zoom.
- **Logout** – Log out and reopen the Login page.

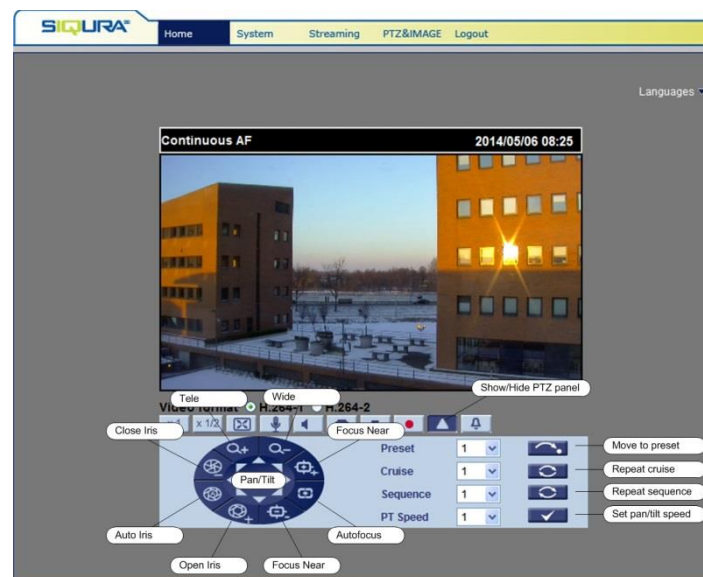


Figure 11 Home page with PTZ panel

View video stream in video player (VLC)

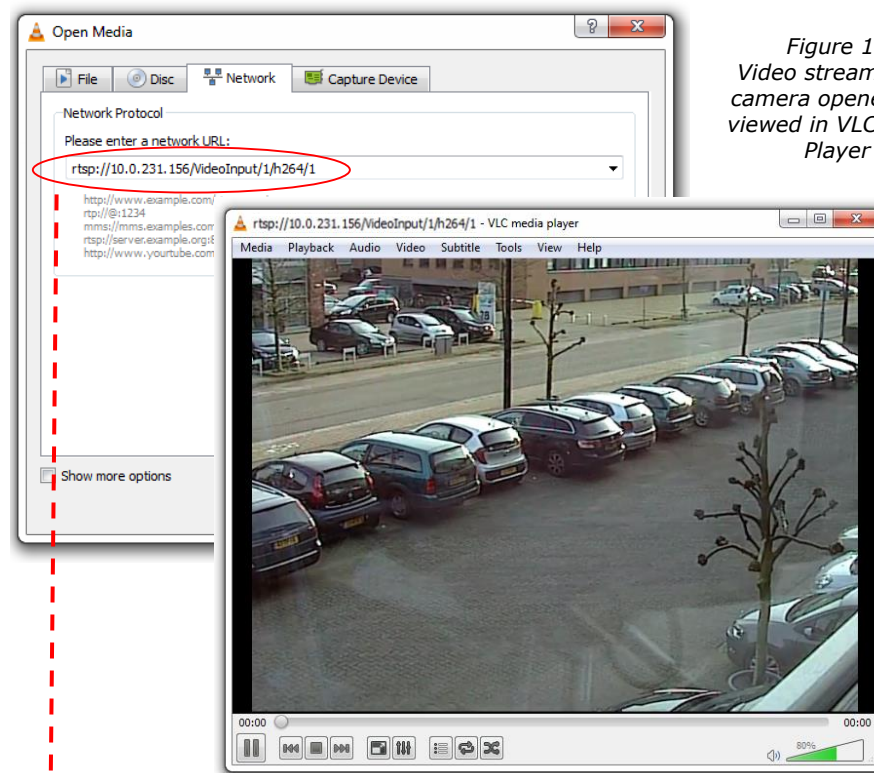


Figure 12
Video stream from camera opened and viewed in VLC Media Player

rtsp://10.0.231.156/VideoInput/1/h264/1

camera IP address

video input number

media type

video encoder number