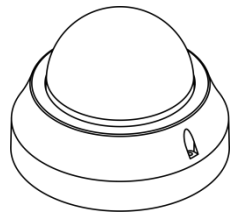


FD810V1IR - Quick Start Guide

This guide helps you to install and access the FD810V1IR camera quickly. For additional information, see the FD810V1IR manuals supplied on the Siqura Product CD (download the latest versions at www.siqura.com).

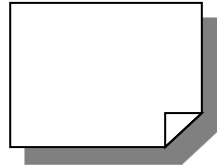
Unpack the camera



FD810V1IR



Security torx



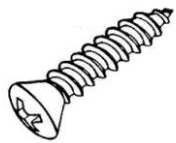
Quick Start Guide



Software and manuals



Rubber washer (x2)



Self-tapping screw (x3)



Plastic screw anchor (x3)



Bolt (1x)

Camera cabling

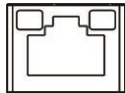
Follow the instructions below for cable connections.

Power and Ethernet connection

Connect one end of a Cat 5 Ethernet cable to the RJ-45 connector of the camera and connect the other end to a PoE switch.



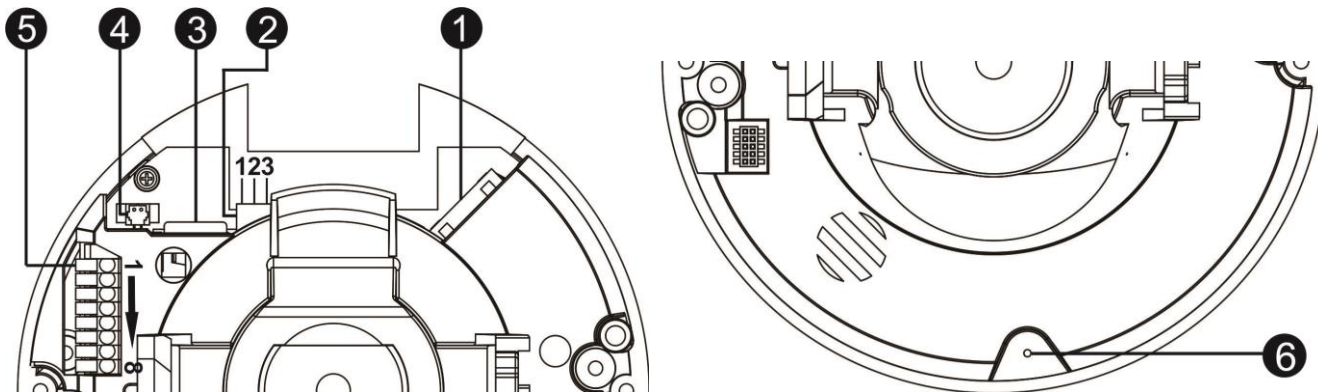
NOTE: Check the status of the link indicator and the activity indicator LEDs. If the LEDs are unlit, check the LAN connection.



A green link light indicates a good network connection.
An orange activity light flashes for network activity indication.

MicroSD card slot / Default button

The microSD card slot and the Default button can be accessed after removing the dome cover.



No.	Connector	Definition
1	RJ-45	For network and PoE connection
2	N/A	-
3	microSD Card Slot	Insert a microSD card into the card slot to store videos and snapshots. Do not remove the microSD card when the camera is powered on.
4	N/A	-
5	N/A	-
6	Default button	Press the button with an appropriate tool for at least 20 seconds to restore the system to the factory-default settings.



NOTE: It is not recommended to record 24/7 continuously with the microSD card, as it may not be able to support long term continuous data read/write operations. Contact the manufacturer of the microSD card for information regarding the reliability and the life expectancy.

Before you log on to the camera

A client program is automatically installed on the PC when you connect to the camera. Before logging on to the camera, make sure that downloading the ActiveX control is allowed by either changing the ActiveX controls and plug-ins settings or setting the Internet security level to default. For further information, see the Installation Manual on the supplied CD.

ActiveX Controls and Plug-ins Settings	Internet Security Level
Step 1: Start Internet Explorer (IE). Step 2: Select <Tools> from the main menu of the browser. Then click <Internet Options>. Step 3: Click the <Security> tab, select <Internet>, and then click <Custom level> to change the ActiveX settings. Step 4: Set the "ActiveX controls and plug-ins" items to <Prompt> or <Enable>.	Step 1: Start Internet Explorer (IE). Step 2: Select <Tools> from the main menu of the browser. Then click <Internet Options>. Step 3: Click the <Security> tab, and then select <Internet>. Step 4: Down the page, click <Default Level> and click <OK> to confirm the setting. Close the browser window, and open a new one later for accessing the IP camera.

Camera logon

The factory-set IP address of the camera is in the 10.x.x.x range. It is printed on a sticker on the camera housing. To access the camera for the first time, set the IP address of the PC to the same subnet as the camera. For example:

Camera IP address: 10.0.172.198
Camera subnet mask: 255.0.0.0

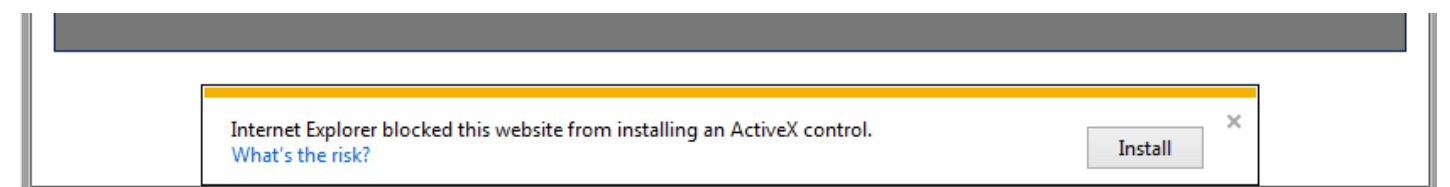
PC IP address: 10.0.160.100
PC subnet mask: 255.0.0.0

Logon ID and password

- Type the IP address of the camera in the URL bar of the web browser window, and then press [ENTER].
- Type the default user name (**Admin**) and password (**1234**) in the logon box. Note that the user name is case sensitive.

Install the ActiveX control

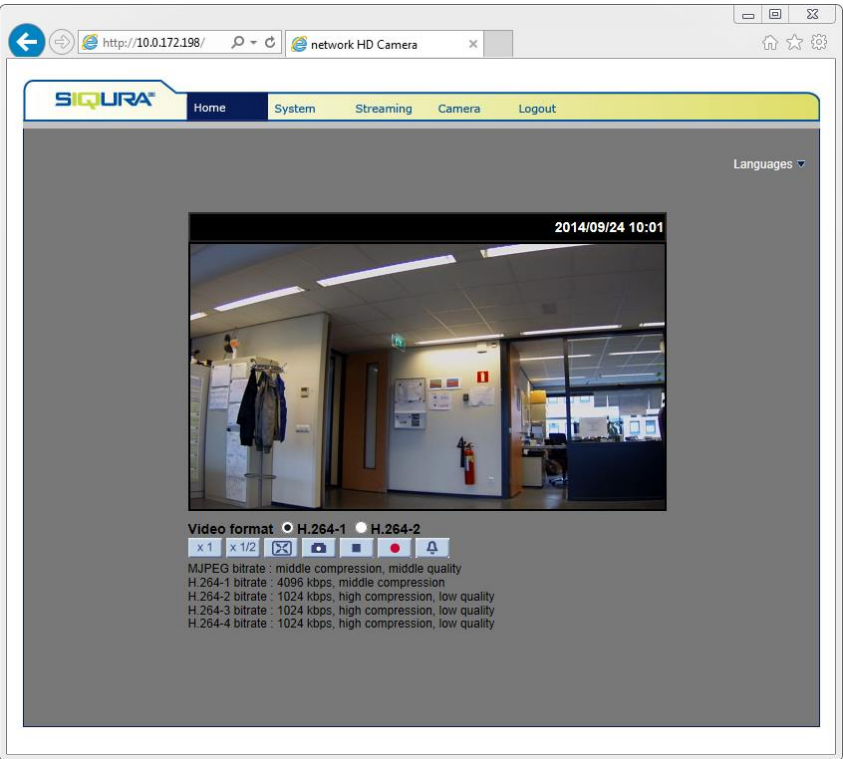
- After connecting to the camera, the request for installing the ActiveX control appears.
- Click <Install> to allow the ActiveX control installation.



- In the pop-up security warning window, click <Yes> to install the Siqura Viewer software on the PC.
- Click <Finish> after the Siqura Viewer installation has completed.

Browser-based viewer

The main page of the IP camera user interface is displayed as shown in the figure below. Note that function buttons will vary depending on the camera model.



Siquira FD810V1IR

High-Definition Fixed Dome IP Camera



Quick Start Guide