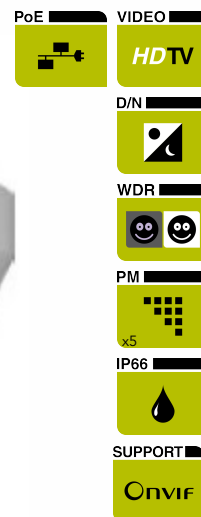


Features

- 1/2.8" Progressive scan CMOS imager
- 3.0 - 6.0 mm varifocal lens
- Full HD 1080p resolution
- Dual-stream H.264 and MJPEG video
- Day/night with IR-cut filter
- Built-in IR illuminator (effective distance: 25 m)
- IP66 Ingress protection rating
- 802.3af Power-over-Ethernet
- ONVIF Profile S conformant



FD810V1IR

High-definition fixed dome camera with D/N

Description

The Siquira® FD810V1IR is an outdoor 1080p fixed dome network camera with built-in IR illuminator.

Multistream high definition

The FD810V1IR has dual-stream capability for simultaneous streaming of H.264 and MJPEG video or dual-stream H.264. It can provide at least one 1080p full frame rate high-definition (HD) video stream or twice 1080p in sub frame rate.

Open standards

Multiple options are available to easily integrate the FD810V1IR to a video management system. In support of open standards, the FD810V1IR is compliant with both the ONVIF specification and Siquira's Open Streaming Architecture (OSA) HTTP API.

Day/night, BLC, and WDR

The FD810V1IR provides automatic day/night functionality for use in low light situations. Backlight compensation (BLC) enhances image visibility in difficult lighting situations. This ensures quality pictures at all times. Wide dynamic range (WDR) solves the problem of overlit images by applying dynamic gain.

Power source choices

The FD810V1IR is powered by 802.3af-compliant PoE sources.

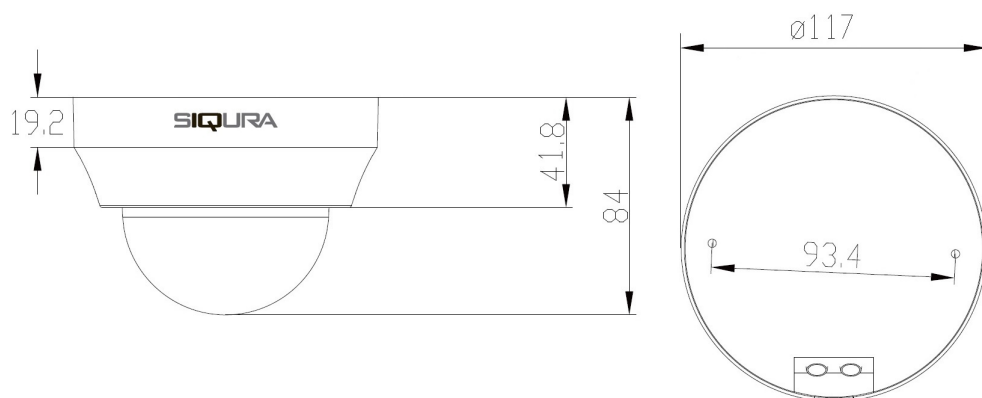
Privacy masks

Privacy masks cover sections of the image. This feature is often requested for such situations as city centre surveillance and point of sale keypads.



Technical Specifications

FD810V1IR



Camera

Image sensor	1/2.8" Progressive scan CMOS
Pixel count	1920 (H) x 1080 (V)
Shutter speed	1 - 1/10000 s
Lens	3.0 - 6.0 mm varifocal lens, F2.0
Minimum scene illumination	0.2 Lux colour, 0.02 lux (b/w), 30 IRE, F2.0; 0 lux with IR
Horizontal FOV (16:9)	93.2° (wide) - 46.6° (tele)

Functions

Privacy masks	5
Image rotation	Normal / flip / mirror / rotate (-90/+90/180 degrees)
Video motion detection	On / off / by schedule
Tamper monitoring	On / off / by schedule
Day/night (IR-cut filter)	Auto / on / off / smart
On-screen display	Time / date / time & date Text: 12 characters, subtitle: 3 rows of 16 characters Image

Image control

Wide dynamic range	On/off
Backlight compensation	On/off
White balance	Auto/manual/ATW/one-push
Saturation	Manual
Hue	Manual
Brightness	Manual
Exposure	Auto/manual
Contrast	Manual
Sharpness	Manual
Noise reduction, 3D	On/off
Digital zoom	8x

Technical Specifications

FD810V1IR

Video

Compression algorithm(s)	H.264 (ISO/IEC 14496-10); MJPEG
Number of compression instances	Dual streams: H.264 + MJPEG / H.264 + H.264
Compression capabilities	
25/30 fps	MJPEG or H.264 in 1080p H.264 in 1080p + H.264 in D1 or MJPEG in D1
13/15 fps	MJPEG in 1080p + H.264 in 1080p
Compression bit rate control	Constant bit rate (CBR), variable bit rate (VBR)
Output bit rate (per H.264 stream)	Up to 8192 kbit/s
Number of video output streams	Up to 20 (RTSP)
Total output data rate	Up to 32 Mbit/s
Video frame rate	1 to 30 fps (NTSC) / 1 to 25 fps (PAL)
Supported resolutions	1920x1080 (1080p); 1280x1024; 1280x720 (720p); 1024x768; 800x600; 720x480 (D1); 640x480; 352x240 (CIF)

Storage

Storage options	Micro SD card, 32 GB
-----------------	----------------------

Network

Interface(s)	10/100 Ethernet
Network protocols	IPv4/v6, TCP/IP, UDP, RTP, RTSP, HTTP, HTTPS, ICMP, FTP, SMTP, DHCP, PPPoE, IGMP, PNAC (IEEE 802.1x), QoS, PoE, UPnP, SNMP
Connector type	RJ-45 on breakout cable

Management

Supported browsers	Internet Explorer (6.0+), Chrome, Firefox, Safari
Security	HTTPS, IP Filter, PNAC (IEEE 802.1x)
Protocols	UPnP, SNMP, ONVIF Profile S
Password levels	User and administrator
User accounts	20

Powering

Power consumption	
System	Max. 3.8 W
IR LED (additional)	Max. 2.0 W
Power	802.3af PoE only

Environmental

Operating temperature	-10 °C to +50 °C (+14 °F to +122 °F)
Relative humidity	10% to 90%, no condensation
Ingress protection	IP66

Technical Specifications

FD810V1IR

Mechanical

Dimensions	Ø 117 x 84 mm (Ø 4.6 x 3.4 in)
Weight	0.22 kg (0.48 lbs)
Colour	RAL 9003 (Signal white)
Built-in IR illuminator	
Working distance	Up to 25 m
Wavelength	850 nm
Number of LEDs	24
Breakout cable length	30 cm (12 in)
Mount	Surface mount / accessories

Ordering information

Models	Description
FD810V1IR	Network fixed dome, 3-6 mm varifocal lens, 1080p, H.264/MJPEG, IP66, IR
WM02/FD810	Tube adapter/pendant mount for FD810 series, indoor/outdoor
WM09	Wall mount for FD810/CD810/CD820



The quality management system used in the development, production, sales, and support of this product is ISO 9001:2008 certified by LRQA.

© Siqua B.V. 2014 - Version 1.0 - Subject to modification.

