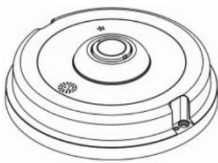


FD360IR - Quick Start Guide

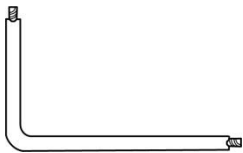
This guide helps you to install and access the FD360IR camera quickly. For more information, go to www.siqua.com/support-files and download the Installation Manual and User Manual of this product.



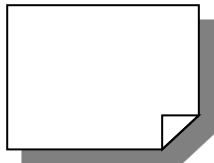
Unpack the camera



FD360IR



Security torx



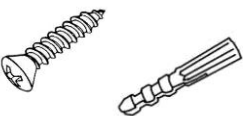
Quick Start Guide



Terminal block (x2)



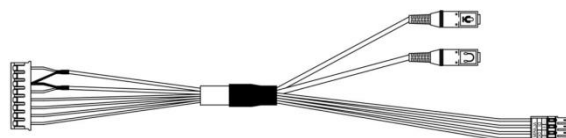
Security screw (x1)



Screw anchor (x3) and self-tapping screw (x3)



Installation template sticker



Functional cable (optional)

Camera connectors



No	Connector	Pin	Definition	Remarks
1	Power	DC	1	DC 12 V / 24 V
			2	Ground
		AC	1	AC 24 V 1
			2	AC 24 V 2
2	RJ-45	-	For network and PoE connections	
3	Alarm & Audio I/O	-	See Alarm & Audio I/O in the <i>All-in-One cable</i> table	
4	Default button	-	Press the button with a proper tool for at least 20 seconds to restore the system to the factory-default settings.	
5	microSD card slot	-	Insert the microSD card into the card slot to store videos and snapshots. Do not remove the microSD card when the camera is powered on.	

NOTE: Siqua advises to use high-grade, highly-durable SD cards. Note that SD cards are limited to the number of write cycles ranging from 1000 (off-the-shelf high-grade card MLC or TLC NAND) to 100.000 (4 GB industrial SLC NAND). Intensive usage will eventually wear out the card. The number of write cycles times the capacity of the SD card gives you the total amount of data that can be written to the card in its life time. A 32 GB microSDHC with 2000 write cycles, for example, can write 64 TB before it should be replaced.

Camera cabling

Power connection

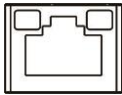
Use a DC 12 V / DC 24 V / AC 24 V power adapter and connect it to the camera and the power outlet. Alternatively, users can use an Ethernet cable and connect it to the RJ-45 connector of the camera and a PoE enabled switch.

Ethernet connection

Connect one end of a Cat 5 Ethernet cable to the RJ-45 connector of the camera and connect the other end to a network switch or PC.

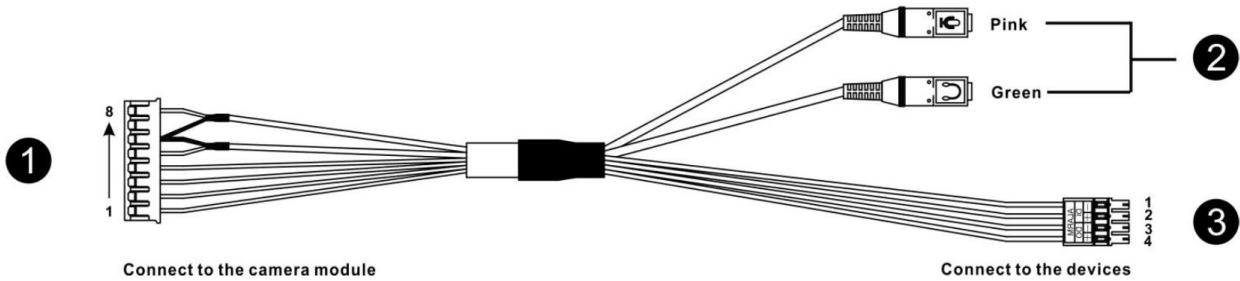
NOTE: In some cases, an Ethernet crossover cable may be needed when connecting the camera directly to a PC.

NOTE: Check the status of the link indicator and the activity indicator LEDs. If the LEDs are unlit, check the LAN connection.



A green link light indicates a good network connection.
An orange activity light flashes for network activity indication.

All-in-One cable (optional)



No.	Connector	Pin	Definition	Remarks
1	Alarm & Audio I/O	1	Alarm Out +	Alarm connection / Two-way audio transmission
		2	Alarm Out -	
		3	Alarm In +	
		4	Alarm In -	
		5	Audio Out	
		6	GND	
		7	-	
		8	Audio In	
2	Audio I/O	Pink	Audio In	Two-way audio transmission
		Green	Audio Out	
3	Alarm I/O (4-Pin terminal block)	1	Alarm In -	Alarm connection
		2	Alarm In +	
		3	Alarm Out -	
		4	Alarm Out +	

Before you log on to the camera

A client program is automatically installed on the PC when you connect to the camera. Before logging on to the camera, make sure that downloading the ActiveX control is allowed by either changing the ActiveX controls and plug-ins settings or setting the Internet security level to default. For more information, see the FD360IR Installation Manual.

ActiveX Controls and Plug-ins Settings	Internet Security Level
Step 1: Start Internet Explorer (IE). Step 2: Select <Tools> from the main menu of the browser. Then click <Internet Options>. Step 3: Click the <Security> tab, select <Internet>, and then click <Custom level> to change the ActiveX settings. Step 4: Set the "ActiveX controls and plug-ins" items to <Prompt> or <Enable>.	Step 1: Start Internet Explorer (IE). Step 2: Select <Tools> from the main menu of the browser. Then click <Internet Options>. Step 3: Click the <Security> tab, and then select <Internet>. Step 4: Down the page, click <Default Level> and click <OK> to confirm the setting. Close the browser window, and open a new one later for accessing the IP camera.

Camera logon

The factory-set IP address of the camera is in the 10.x.x.x range. It is printed on a sticker on the camera housing.
To access the camera for the first time, set the IP address of the PC to the same subnet as the camera. For example:

Camera IP address: 10.0.172.198
Camera subnet mask: 255.0.0.0

PC IP address: 10.0.160.100
PC subnet mask: 255.0.0.0

Logon ID and password

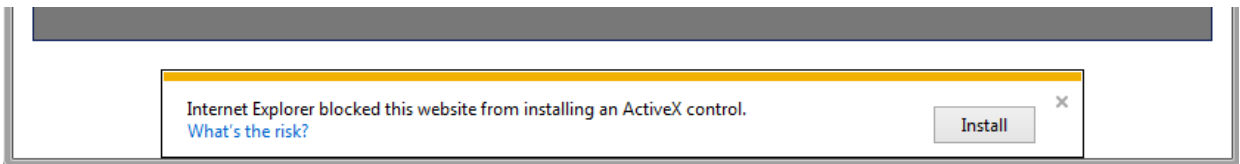
- Type the IP address of the camera in the URL bar of the web browser window, and then press [ENTER].
- Type the default user name (**Admin**) and password (**1234**) in the logon box. Note that the user name is case sensitive.



CAUTION: MAKE SURE THAT YOU CHANGE THE DEFAULT ADMIN PASSWORD AT THE FIRST LOGIN. TO KEEP THE ACCOUNT SAFE, CREATE A STRONG, COMPLEX PASSWORD. THIS HELPS TO PREVENT UNAUTHORISED ACCESS FROM PEOPLE WHO TRY TO USE THE DEFAULT ACCOUNT.

Install the ActiveX control

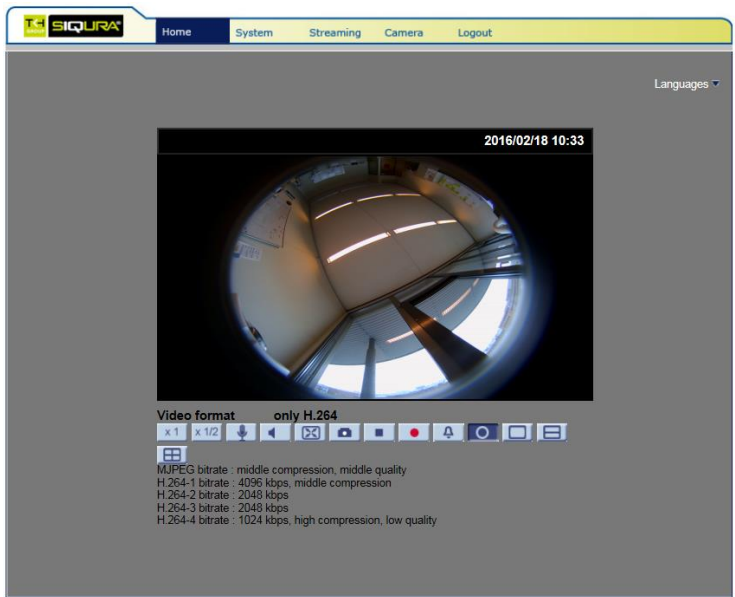
- After connecting to the camera, the request for installing the ActiveX control appears.
- Click <Install> to allow the ActiveX control installation.



- In the pop-up security warning window, click <Yes> to install the Siquira Viewer software on the PC.
- Click <Finish> after the Siquira Viewer installation has completed.

Browser-based viewer

The main page of the IP camera user interface is displayed as shown below. Note that function buttons will vary depending on the camera model.



Siquira FD360IR

Indoor Fisheye IP Camera



Quick Start Guide