

FD2002M1-EI

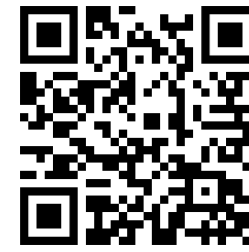
2MP Fixed Dome Camera

Quick Start Guide



Find additional manuals, the datasheet, the EU Declaration of Conformity, and the latest firmware for this product at:

Siqura.com/downloads/software



Unpack



Note 1: Subject to modification. Actual product and accessories may differ in appearance.

Installation Notices

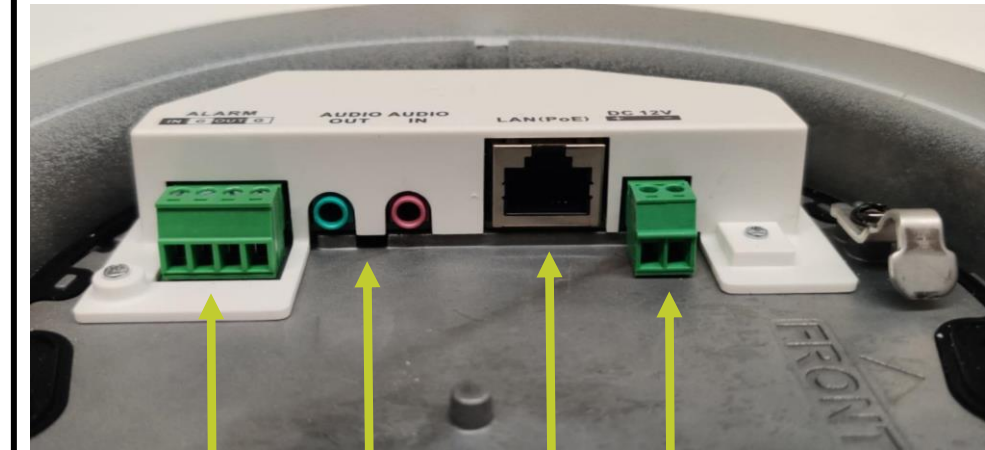


CAUTION:
 INSTALLATION SHALL BE PERFORMED BY QUALIFIED PERSONNEL ONLY. INSTALLATION SHALL BE IN ACCORDANCE WITH LOCAL PROCEDURES. INSTALLATION WITH POE SHALL BE IN UNEXPOSED NETWORKS. BATTERY REPLACEMENT SHALL NOT BE APPLIED IN VIEW OF THE RISK OF EXPLOSION.
 IF YOU USE AN EXTERNAL POWER SUPPLY, CONTACT SIQURA TO MAKE SURE THAT THE POWER SUPPLY HAS THE PROPER POWER SPECIFICATIONS. MAKE SURE THAT THE POWER SUPPLY COMPLIES WITH LPS REQUIREMENTS. WHEN INSTALLING THE CAMERA, HOOK UP THE CAMERA WITH THE ANTI-DROP CHAIN OF THE PENDANT TO THE ANTI-DROP RING (SEE FIGURE 1). FOR MORE INFORMATION, CONTACT SIQURA.



NOTE:
 IT IS NOT RECOMMENDED TO CONTINUOUSLY (24/7) RECORD WITH THE MICRO SD CARD, AS THE CAMERA MAY NOT SUPPORT LONG-TERM CONTINUOUS DATA READ/WRITE. CONTACT THE MANUFACTURER OF THE MICRO SD CARD FOR INFORMATION REGARDING THE RELIABILITY AND THE LIFE EXPECTANCY.

Connectors



Alarm I/O

Audio I/O

RJ-45

12 Vdc 802.3af PoE

Reset & Micro SD

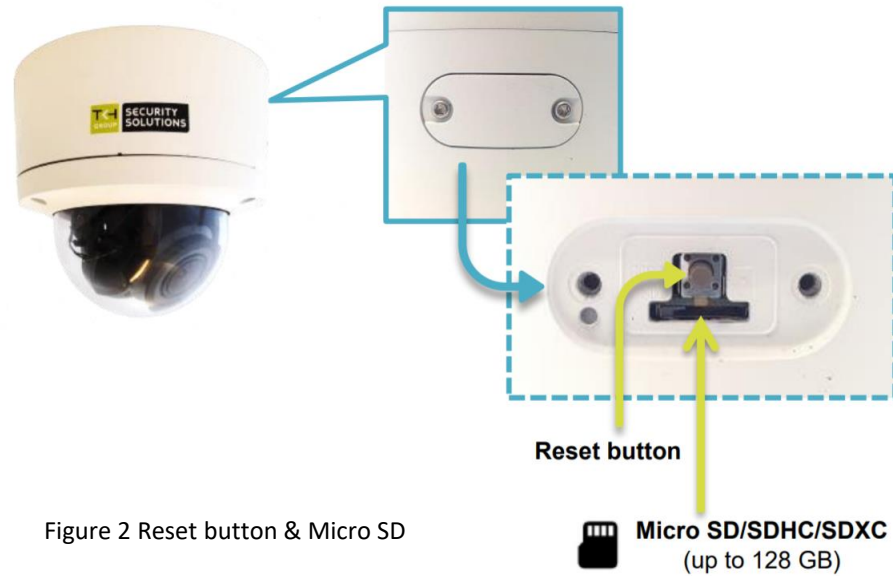


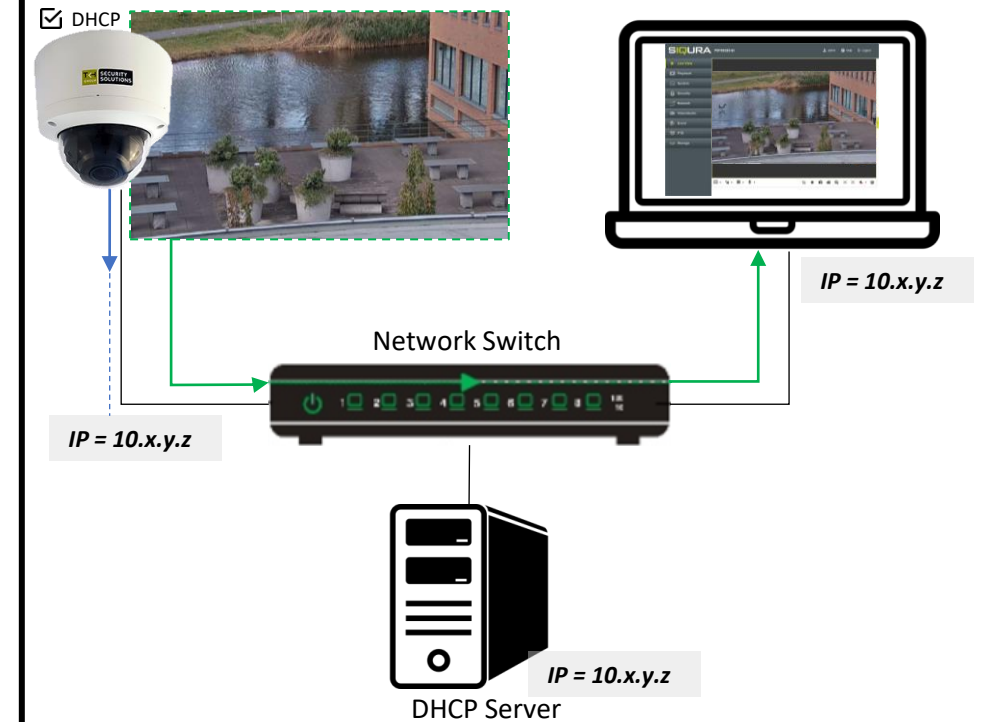
Figure 2 Reset button & Micro SD

Note 2: Press and hold the reset button for 10 seconds to power on or reboot. It will restore the factory default setting including IP address, user name and password.

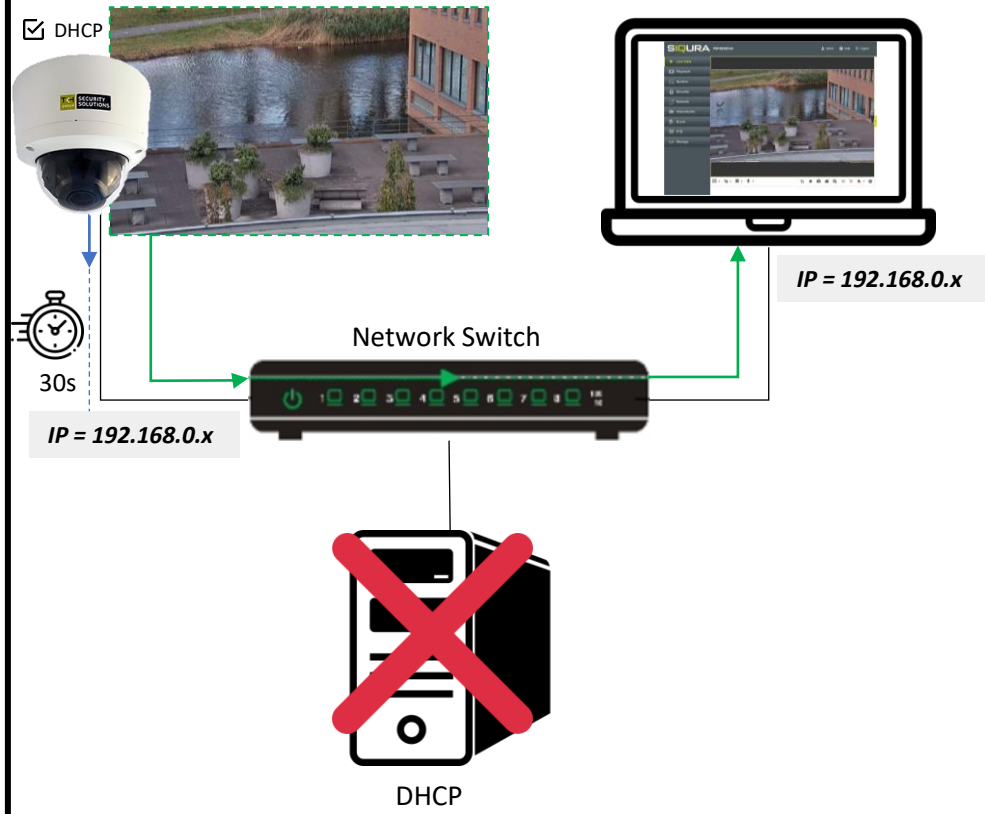
Adjust to Good View



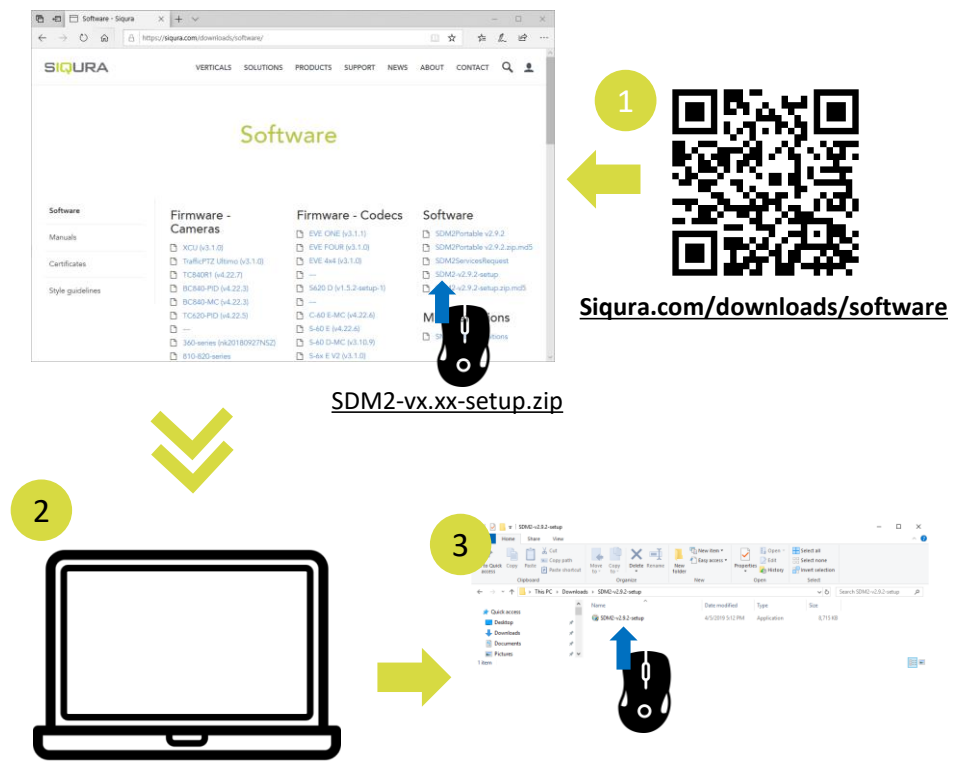
Accessing the camera - DHCP Server



Accessing the camera – Fixed IP address



Auto detect with SDM2



1st time camera login

Set a strong password

Activation
 User Name: admin
 Password:
 Confirm:
 Valid password range [8-16]. You can use a combination of numbers, lowercase, uppercase and special character for your password with at least two kinds of them contained.

qwer1234 ❌

x6W@oM0a!9#F ✅

Browser-based Viewer

