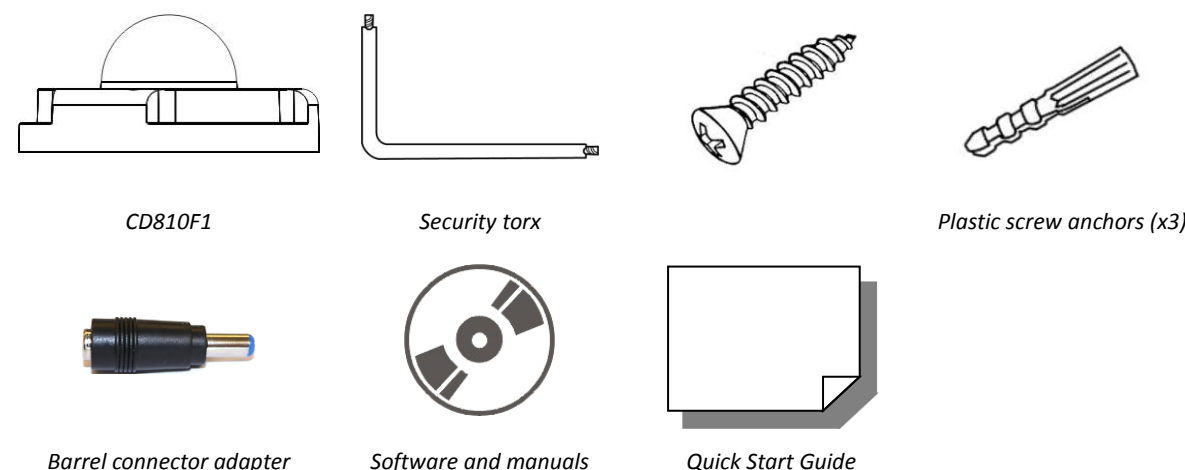


CD810F1 - Quick Start Guide

This guide helps you to install and access the CD810F1 camera quickly. For additional information, see the CD810F1 manuals supplied on the Siqura Product CD (download the latest versions at <http://www.siqura.com>).

Unpack the camera



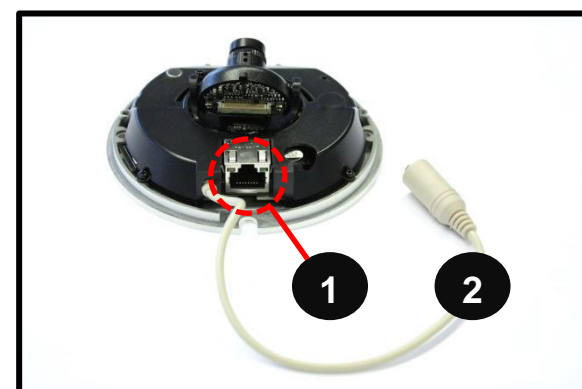
Camera cabling

Power connection

You can use a DC 12 V power adapter and connect it to the camera and the power outlet or you can use an Ethernet cable and connect it to the RJ-45 connector of the camera and a PoE switch.

Ethernet cable connection

The RJ-45 connector of the camera is inside the dome cover. Its position is shown below. To connect the Ethernet cable, loosen the two security screws of the dome cover with the supplied security torx. Then use an Ethernet cable without boot cover to connect to the camera's RJ-45 connector and a PoE switch.



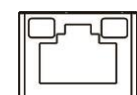
No.	Connector	Definition
1	RJ-45	For network and PoE connections
2	Power jack (DC 12 V)	Power connection



NOTE: In some cases, an Ethernet crossover cable may be needed when connecting the camera directly to a PC.



NOTE: Check the status of the link indicator and the activity indicator LEDs. If the LEDs are unlit, check the LAN connection.



A green link light indicates a good network connection.
An orange activity light flashes for network activity indication.

MicroSD card slot / Default button / Built-in microphone

The microSD card slot and the default button of the camera are inside the dome cover. To use them, loosen the two security screws of the dome cover with the supplied security torx. A built-in microphone is available for audio recording. It can be used with the dome cover attached. See the following figure for their positions and functions.



No.	Item	Definition
1	microSD card slot	Insert the microSD card into the card slot to store videos and snapshots. Do not remove the microSD card when the camera is powered on.
2	Default button	Press the button with a proper tool for at least 20 seconds to restore the system to the factory-default settings
3	Built-in microphone	The built-in microphone is for audio in.



NOTE: It is not recommended to record 24/7 continuously with the microSD card, as it may not be able to support long term continuous data read/write operations. Contact the manufacturer of the microSD card for information regarding the reliability and the life expectancy.

Before you log on to the camera

A client program is automatically installed on the PC when you connect to the camera. Before logging on to the camera, make sure that downloading the ActiveX control is allowed by either changing the ActiveX controls and plug-ins settings or setting the Internet security level to default. For more information, see the Installation Manual on the supplied CD.

ActiveX Controls and Plug-ins Settings	Internet Security Level
Step 1: Start Internet Explorer (IE). Step 2: Select <Tools> from the main menu of the browser. Then click <Internet Options>. Step 3: Click the <Security> tab, select <Internet>, and then click <Custom level> to change the ActiveX settings. Step 4: Set the "ActiveX controls and plug-ins" items to <Prompt> or <Enable>.	Step 1: Start Internet Explorer (IE). Step 2: Select <Tools> from the main menu of the browser. Then click <Internet Options>. Step 3: Click the <Security> tab, and then select <Internet>. Step 4: Down the page, click <Default Level> and click <OK> to confirm the setting. Close the browser window, and open a new one later for accessing the IP camera.

Camera logon

The factory-set IP address of the camera is in the 10.x.x.x range. It is printed on a sticker on the camera housing. To access the camera for the first time, set the IP address of the PC to the same subnet as the camera. For example:

Camera IP address: 10.0.172.198
Camera subnet mask: 255.0.0.0

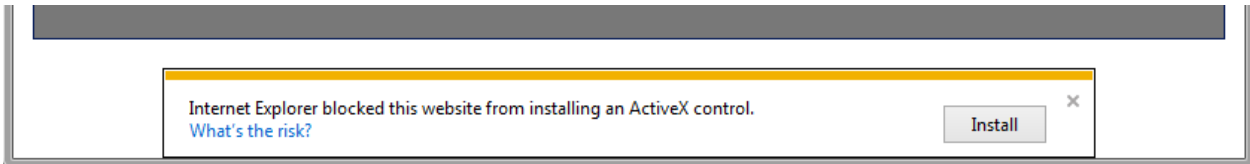
PC IP address: 10.0.160.100
PC subnet mask: 255.0.0.0

Logon ID and password

- Type the IP address of the camera in the URL bar of the web browser window, and then press [ENTER].
- Type the default user name (**Admin**) and password (**1234**) in the logon box. Note that the user name is case sensitive.

Install the ActiveX control

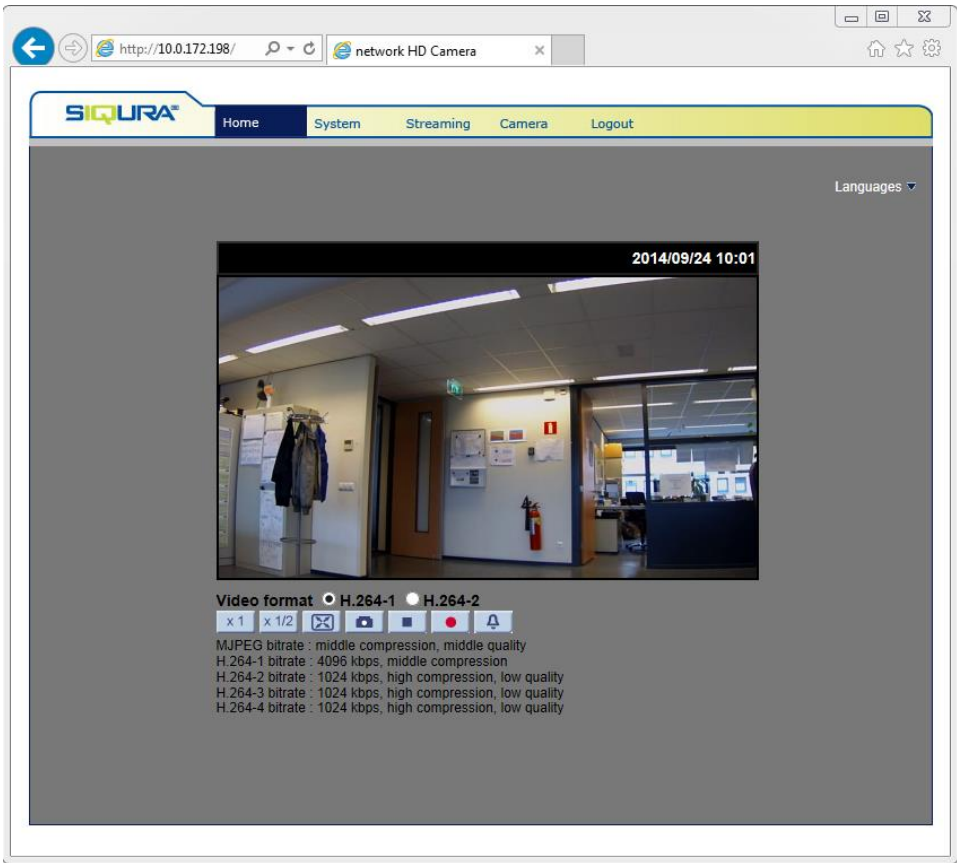
- After connecting to the camera, the request for installing the ActiveX control appears.
- Click <Install> to allow the ActiveX control installation.



- In the pop-up security warning window, click <Yes> to install the Siquira Viewer software on the PC.
- Click <Finish> after the Siquira Viewer installation has completed.

Browser-based viewer

The main page of the IP camera user interface is displayed as shown in the figure below. Note that function buttons will vary depending on the camera model.



Siquira CD810F1

Compact Fixed Dome IP Camera



Quick Start Guide