

BL950

5MP Network Bullet Camera

Quick Start Guide



Find additional manuals, the datasheet, the EU Declaration of Conformity, and the latest firmware for this product at:

tkhsecurity.com



Manufacturer information:

Name: TKH Security B.V.
Address: Werner von Siemensstraat 7,
2712PN, Netherlands
Email: info.nl@tkhsecurity.com



Unpack



BL950

M4 Self-tapping screw
and screw anchors(x5)

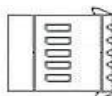


Security Torx

2-pin power terminal
block



5-pin alarm
terminal block



Quick Start Guide



Subject to modification. Actual product and accessories may differ in appearance.

Installation Notices



CAUTION INSTALLATION SHALL BE PERFORMED BY QUALIFIED PERSONNEL ONLY. INSTALLATION SHALL BE IN ACCORDANCE WITH LOCAL PROCEDURES. THE CAMERA CONTAINS BATTERIES. DO NOT REPLACE IN RISK OF EXPLOSION.

BATTERY REPLACEMENT SHALL NOT BE APPLIED IN VIEW OF THE RISK OF EXPLOSION. LE REMPLACEMENT DES PILES NE DOIT PAS ÊTRE APPLIQUÉ AU RISQUE D'EXPLOSION. DISPOSE OF USED BATTERIES ACCORDING TO THE INSTRUCTIONS. METTRE AU REBUT LES BATTERIES USAGÉES CONFORMÉMENT AUX INSTRUCTIONS..

FOR "PoE" INPUT CONNECTION, USE ONLY WITH UL LISTED I.T.E WITH "PoE" OUTPUT. DESCRIPTION FOR THE "PoE" IS INTENDED TO BE CONNECTED TO NOT EXPOSED (OUTSIDE PLANT) NETWORKS OR EQUIVALENT STATEMENT IN INSTALLAION INSTRUCTIONS.

POUR LA CONNEXION D'ENTRÉE "PoE", UTILISER UNIQUEMENT AVEC UN I.T.E. LISTE AVEC UNE SORTIE "PoE". LA DESCRIPTION DE "POE" EST CONÇUE POUR ÊTRE CONNECTÉE À DES RÉSEAUX OR NON ÉNONCÉS (INSTALLATIONS EXTÉRIEURES), DANS LES INSTRUCTIONS D'INSTALLATION DE L'INSTALLATION.

Connectors

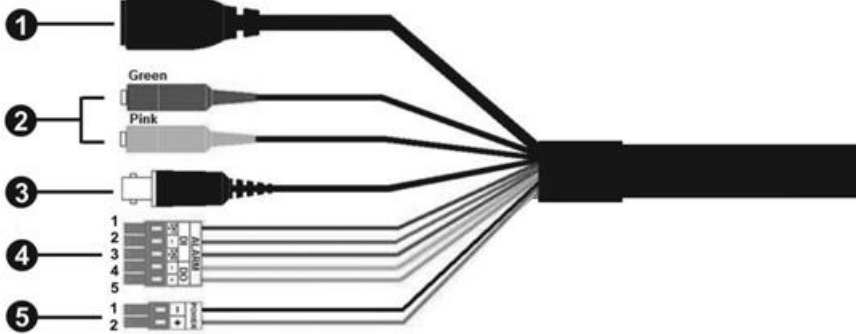


Figure 1 Camera Connectors

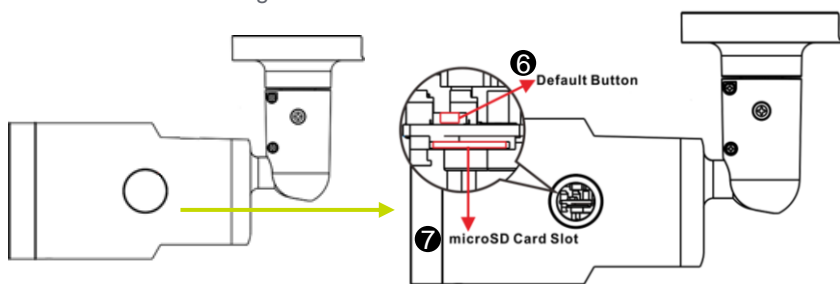


Figure 2 Default button and microSD card slot

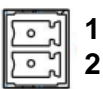
Connector Definition

No.	Connector	Definition
1	RJ45/PoE	Network and PoE connections. Contact TKH Security for a compatible PoE injector.
2	Audio I/O	Two-way audio transmission.
3	BNC	For analogue video output
4	Alarm I/O	Alarm I/O connection. Do not connect external power to the alarm I/O connector of the camera.
5	Power & RS-485	For DC12V/AC24V power connection
6	Reset Button	Press the button with a proper tool for at least 20 seconds to restore the system.
7	microSD Card Slot	Insert the microSD card into the card slot to store videos and snapshots. Do not remove the microSD card when the camera is powered on.

Table 1 Connector definition

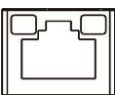
Camera Cabling

Power Connector



Pin	Definition
1	DC12V + / AC24V
2	DC12V - / AC24V

Table 2 Pin definition



- The green link LED is lit when there is a good network connection.
- The orange network LED flashes to indicate that there is network activity.



IN SOME CASES, AN ETHERNET CROSSOVER CABLE MAY BE NEEDED WHEN CONNECTING THE CAMERA DIRECTLY TO THE PC. CHECK THE STATUS OF THE LINK INDICATOR AND THE ACTIVITY INDICATOR LEDS. IF THE LEDS ARE UNLIT, CHECK THE LAN CONNECTION.

Alarm I/O and RS-485 Connection

See the diagram and the pin definition below for the alarm I/O connection.

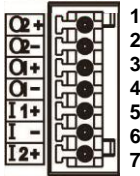
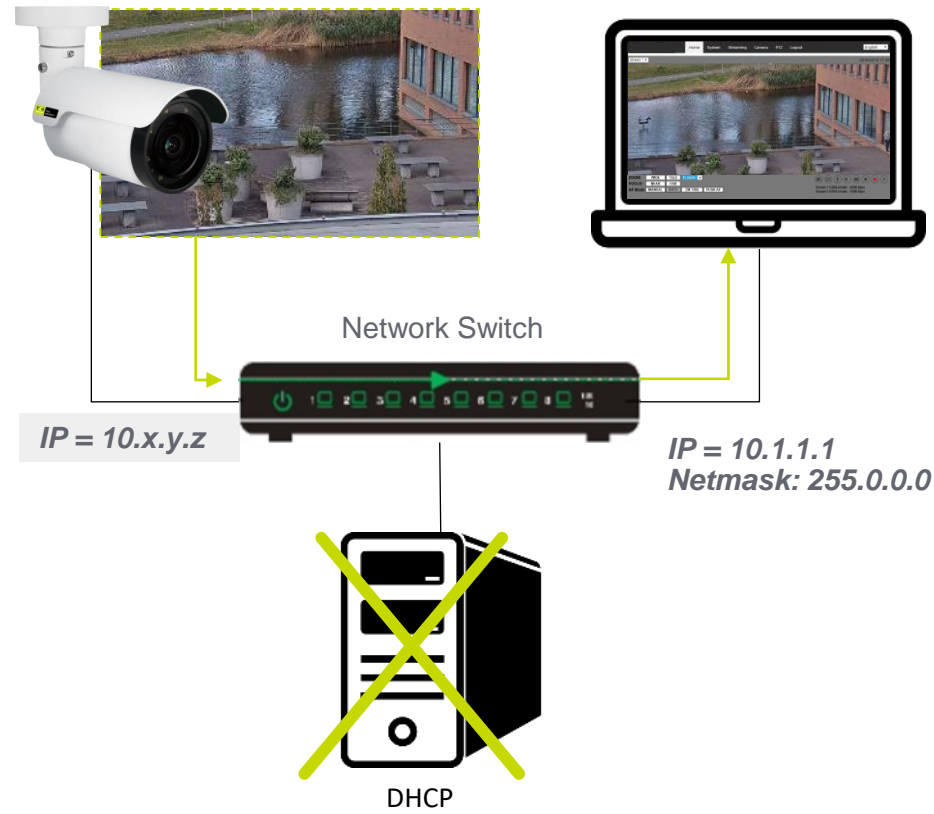


Figure 2 Diagram of Alarm I/O connection pins

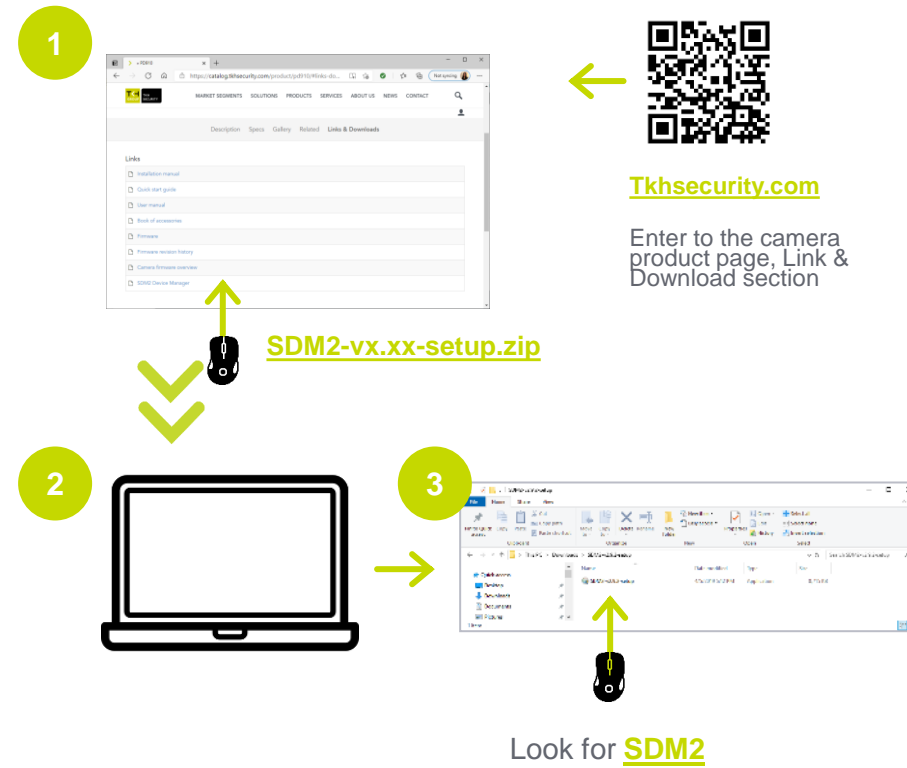
Pin	Definition	Pin	Definition
1	Alarm In 2+	4	Alarm Out1 -
2	Alarm In -	5	Alarm out1+
3	Alarm In1+		

Table 3 Pin definitions

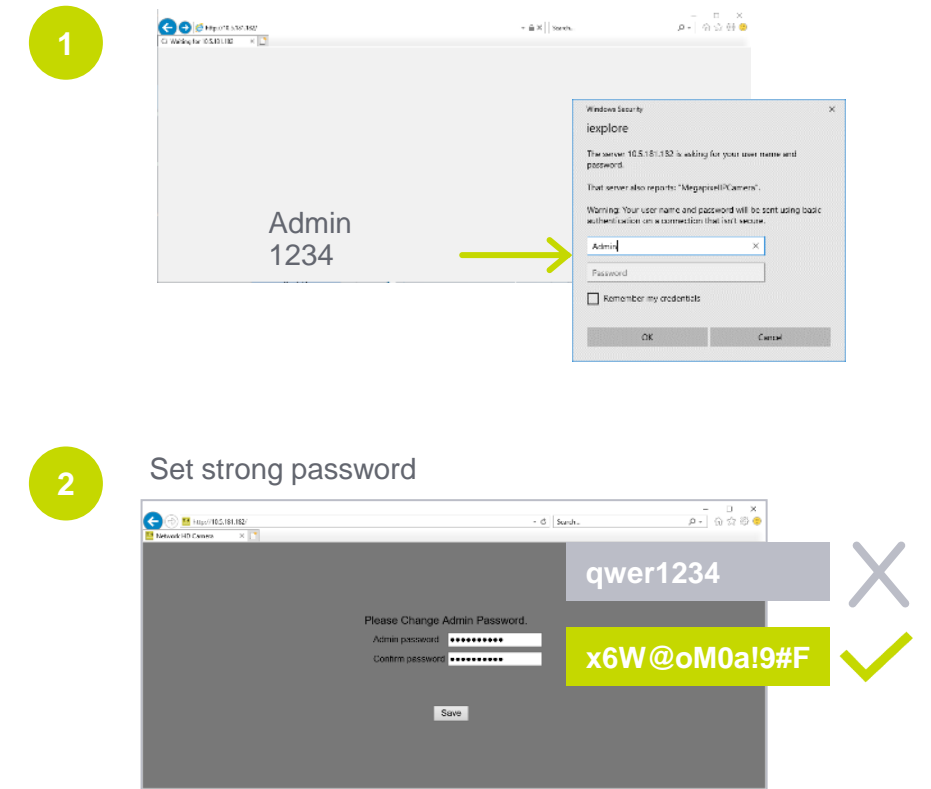
Accessing the camera



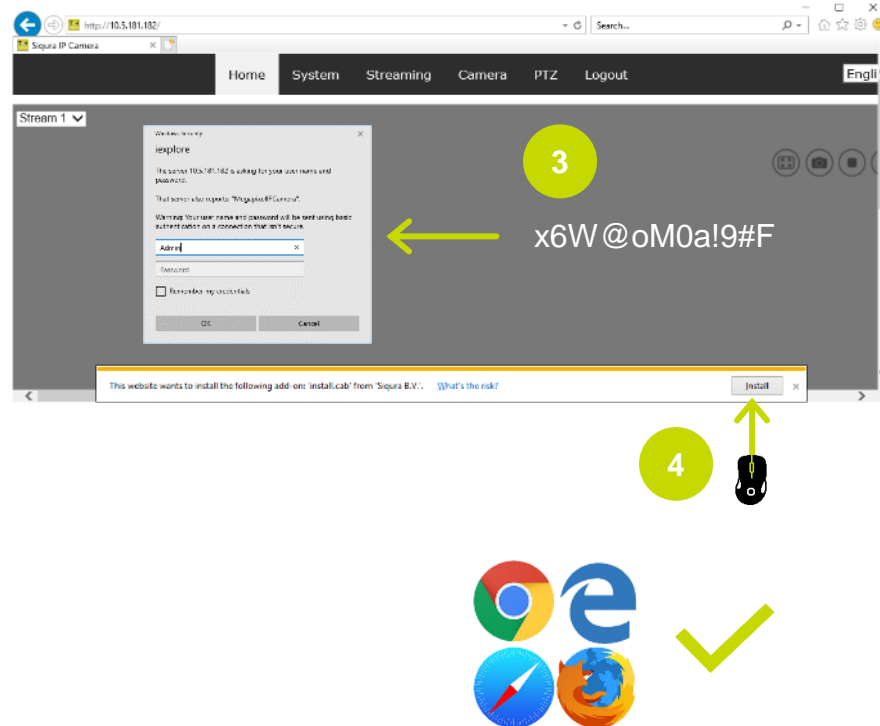
Auto detect with SDM2



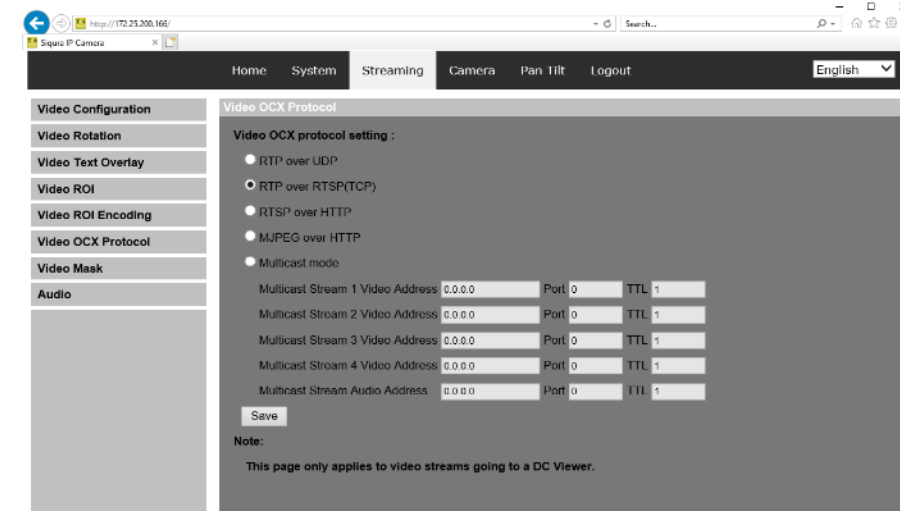
1st time camera login



Install browser-based viewer



Install browser-based viewer



If the web interface is not showing video, you might to open your firewall or set the OCX protocol to RTP-over-RTSP(TCP)



IT IS NOT RECOMMENDED TO CONTINUOUSLY (24/7) RECORD WITH THE MICRO SD CARD, AS THE CAMERA MAY NOT SUPPORT LONG-TERM CONTINUOUS DATA READ/WRITE. CONTACT THE MANUFACTURER OF THE MICRO SD CARD FOR INFORMATION REGARDING THE RELIABILITY AND THE LIFE EXPECTANCY.

Browser-based Viewer

Figure 4 shows the main page of the IP camera user interface.

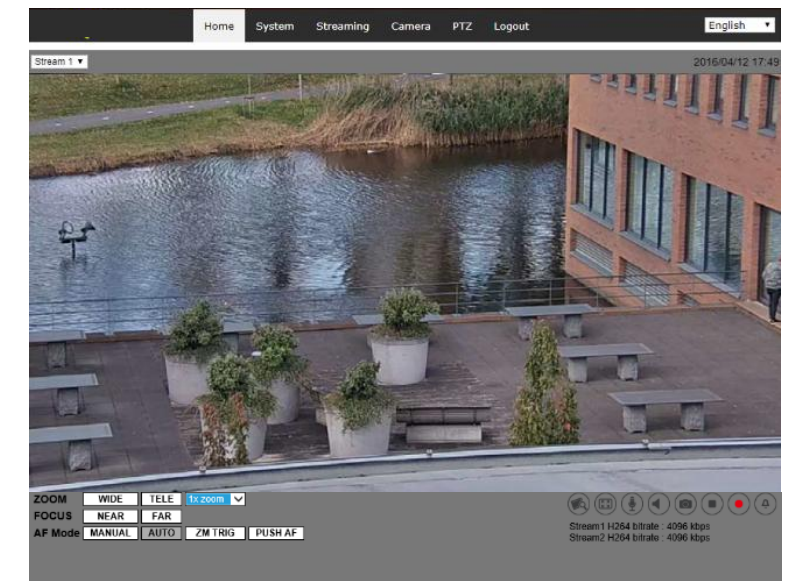


Figure 4 Main page IP camera user interface

Note 1: If the IE web interface is not showing video, you might need to open your firewall or set the OCX protocol to RTP-over-RTSP(TCP).