

Siquira BL820M1IR Series

Full HD IR bullet IP camera

Quick Start Guide



Find additional manuals for this Siquira product at: www.siquira.com/support-files



Unpack

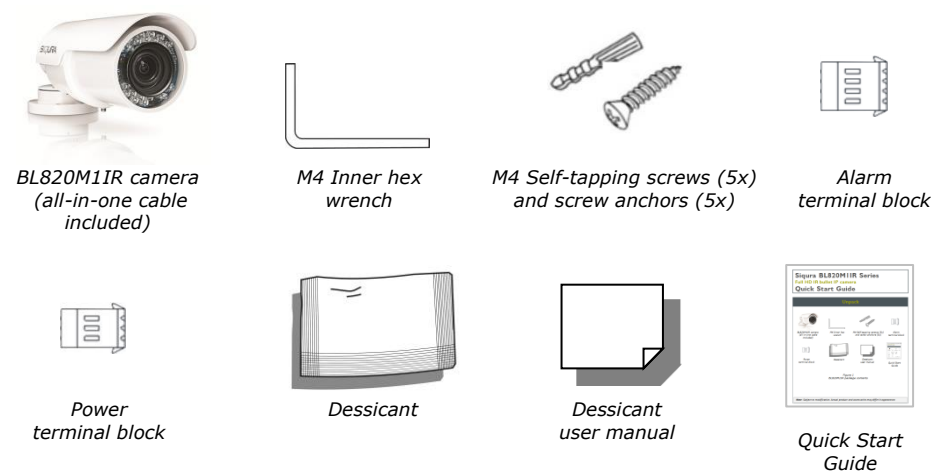


Figure 1
BL820M1IR package contents

Note: Subject to modification. Actual product and accessories may differ in appearance.

Determine installation location

Determine where you are going to install your BL820.

- Make sure that the surface has sufficient strength to support the camera.
- If using Power over Ethernet (PoE), check that there is adequate access to an IEEE 802.3at Power over Ethernet (PoE)-enabled network.

1. Connect the power/Ethernet/alarm/audio wires from ceiling or wall to the corresponding connectors of the camera's all-in-one cable.
2. Fix the camera's bracket to the ceiling/wall with the supplied self-tapping screws
3. Use the supplied inner hex wrench and cross screwdriver to loosen the hex bolt/screw on the side of the bracket mount and the camera housing to adjust the position of the camera.

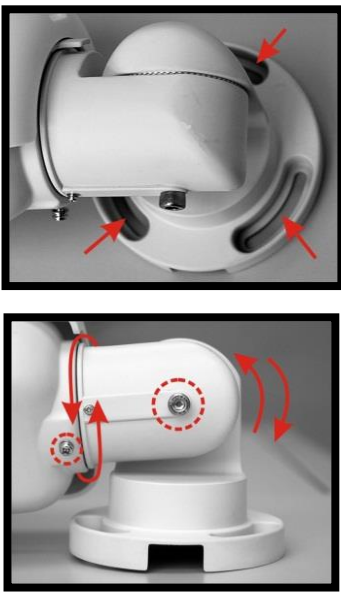


Figure 2 The BL820 mounts onto wall or ceiling

Access microSD card slot and reset button

To access the BL820's microSD card slot, reboot button, and factory default reset button

- Unscrew the screw on the camera housing and then remove the front housing.

To reset the camera to its factory-default settings

- With the camera powered up, press and hold the reset button for 10 seconds. All settings, including the IP address will be reset.

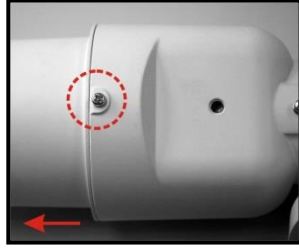


Figure 3a
Housing screw

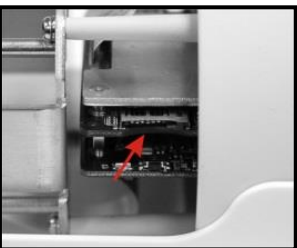


Figure 3b
microSD card slot

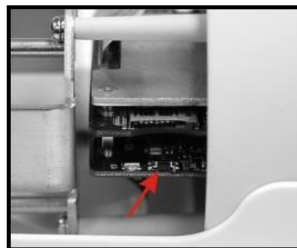


Figure 3c
Factory Default button

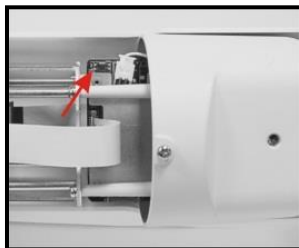


Figure 3d
Reboot button

Note: For information on preventing moisture from condensing on the camera's glass cover, see the Desiccant user manual.

Connect and power up

To power the BL820 with PoE

- Attach the RJ-45 connector to an appropriate PoE network switch. Use Cat 5 Ethernet cable less than 100 m in length. Connect to hub/switch with straight-through; direct to a PC with crossover.

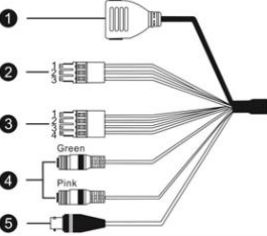


Figure 4 Cable connectors

To power the BL820 with AC 24 V / DC 24 V

- Connect to the DC/AC power source as indicated by the labeling of the terminal block.

No.	Cable	Pin	Definition	Remarks
1	Network (w/PoE)		RJ-45 connector with LED	
2	Power (3-pin terminal block)	1	AC 24 V-1	Power connection
		2	GND	
		3	AC 24 V-2	
3	Alarm (4-pin terminal block)	1	ALM_DI-	Alarm connection
		2	ALM_DI+	
		3	ALM_DO-	
		4	ALM_DO+	
4	Audio I/O	Pink	Line In/ Mic In	Two-way audio transmission
		Green	Line Out	
5	BNC	-	Analogue video output	

Table 1 BL820 connector assignments

Log on

You can access the settings of the camera via its webpages.

Use Internet Explorer 6.x or higher, Chrome, Firefox or Safari to browse the webpages.

To open communication with the BL820

1. Make an IP connection between the camera and the PC. To achieve initial access, the network adapter of the PC must be set to the same subnet as the camera. The factory-set IP address is printed on a label located on the bottom of the camera.
2. Type the IP address of the camera in the address bar of your web browser.
3. Enter the default user name (Admin) and password (1234). Note that the user name is case sensitive.
4. When prompted about an ActiveX control installation, click **Install**.
5. Enable ActiveX controls.



CAUTION: MAKE SURE THAT YOU CHANGE THE DEFAULT ADMIN PASSWORD AT THE FIRST LOGIN. TO KEEP THE ACCOUNT SAFE, CREATE A STRONG, COMPLEX PASSWORD. THIS HELPS TO PREVENT UNAUTHORIZED ACCESS FROM PEOPLE WHO TRY TO USE THE DEFAULT ACCOUNT.



Figure 5 Enter the IP address of the camera into the address bar of your browser

Install Siquira Device Manager (optional)



Figure 6 Download Siquira Device Manager at <http://www.siquira.com/support-files>
Install the software on the browsing PC.

Access via Siqura Device Manager

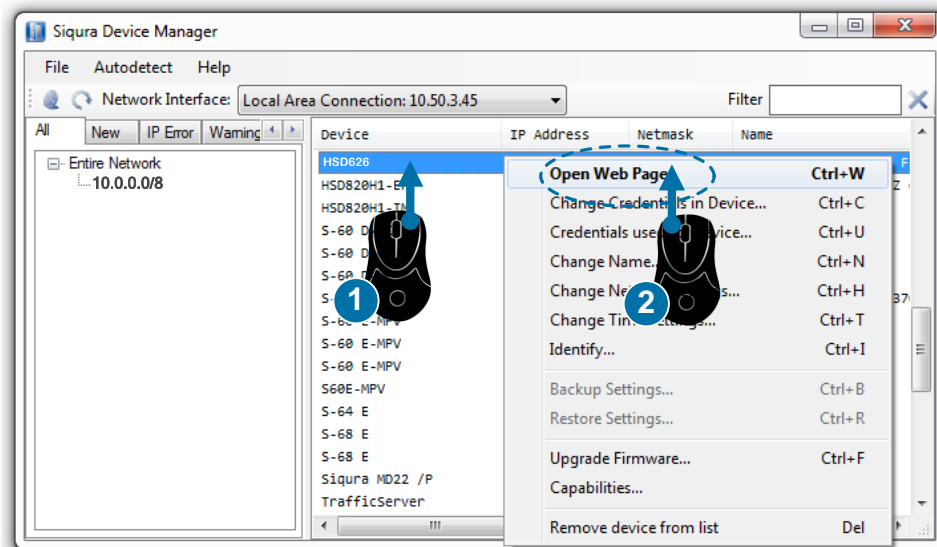


Figure 7 Siqura devices discovered by Siqura Device Manager

Change network settings

With Siqura Device Manager you can directly change the network settings of Siqura cameras.

To change the network settings

1. Right-click the camera in Siqura Device Manager.
2. Click **Change Network Settings**.
3. Click **Enable DHCP**.
- OR -
click **Static IP**, and then enter the new IP address, subnet mask, and gateway address.
4. Click **OK**.

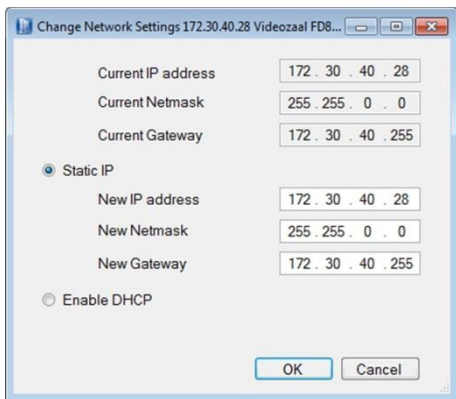


Figure 8 Network settings

Note: A DHCP server must be installed on the network in order to apply DHCP network support.

Alternatively, you can change these settings on the Network webpage of the camera. For more information, see the User Manual.

Navigate the webpages

Across the top of the BL820 home page are five main menu items.

- **Home**
Here you can monitor a live video stream or double-click the image to view stream details.
- **System**
Here you can set the host name, system time, root password, and other network related settings.
- **Streaming**
Here you can set video and audio formats and compression parameters.
- **Camera**
Here you can adjust various camera settings, including exposure, white balance, brightness, sharpness, contrast, and digital zoom.
- **Logout**
The Logout option signs the user out of the camera's webpages and opens the Login page.

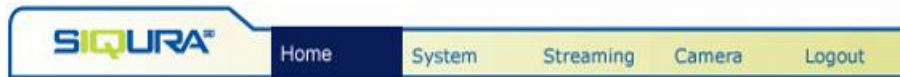


Figure 8 The BL820 web interface menus

Rotate camera image

Depending on how BL820 camera is mounted, you may need to rotate the camera image.



Figure 10 Applying Mirror video rotation

To select a video rotation type

1. On the Streaming tab, click to select **Video Format** from the menu options on the left.
2. Choose one of the following video rotation types:
 - **Normal video.** The camera's orientation is not modified.
 - **Flip video.** The image rotates across the horizontal axis.
 - **Mirror video.** The image rotates across the vertical axis.
 - **90 degree clockwise.** The image rotates 90° clockwise.
 - **180 degree rotate.** The image rotates 180°.
 - **90 degree counterclockwise.** The image rotates 90° counterclockwise.
3. Click **Save** to confirm settings.

Connect audio

If microphones and speakers are implemented, the BL820 camera can be used to provide a two-way audio channel.

Step 1: Connect the audio input and output connectors to the camera's all-in-one connector (figures 4 and 11).

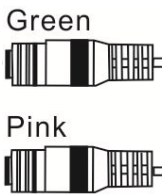


Figure 11 Audio in and out connectors.

Step 2: In the internal web pages, go to **Streaming > Audio** and select one of the following options:

- **Full-duplex** – Audio can be transmitted and received at the same time. Local and remote sites can communicate with each other simultaneously.
- **Half-duplex** – Audio can be either transmitted or received. One site can talk or listen to the other site in turn.
- **Simplex (Talk only)** – Audio can be transmitted. One site can speak to the other site.
- **Simplex (Listen only)** – Audio can be received. One site can listen to the other site.
- **Disable** – The audio transmission function is turned off.

Configure alarms

Connecting an alarm device, such as a sensor, to the BL820 camera input can trigger an output action to occur based on contact closure settings. A motion detection or tampering alarm can also trigger an output action.

Step 1: Connect the alarm relay connectors to the I/O terminal block (figure 4 and table 2).

Step 2: In the internal webpages, go to the **System** tab. Using the **Application**, **Motion Detection**, and **Tampering** pages, configure the alarms as desired.

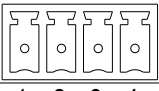
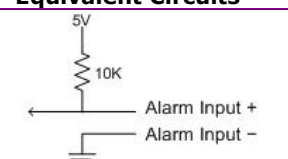
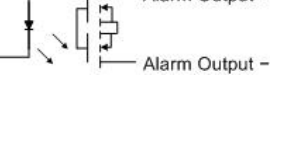
Pin Definitions	Equivalent Circuits	Output Specification
		<ul style="list-style-type: none">• Solid state relay MOSFET output• Absolute MAX Voltage: 300 Vac/dc
<ol style="list-style-type: none">1. Output+2. Output-3. Input+4. Input-		<ul style="list-style-type: none">• ON-Resistance: MAX 30 Ω• MAX Load Current: 100 mA• OFF Leakage Current: 1 uA

Table 2 Alarm definitions

Note: For Serial Port information, see the Installation Manual.