

BL2005v2M

5MP Vandal Bullet Camera

Quick Start Guide

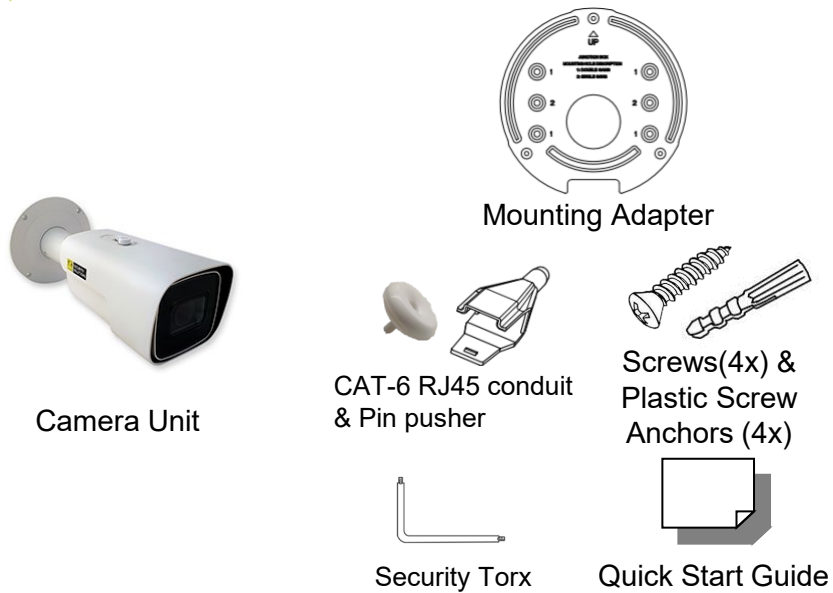


Find additional manuals, the datasheet, the EU Declaration of Conformity, and the latest firmware for this product at:

tkhsecurity.com



Unpack



Subject to modification. Actual product and accessories may differ in appearance.

Installation Notices



Caution installation shall be performed by qualified personnel only. Installation shall be in accordance with local procedures. The camera contains batteries.

Battery replacement shall not be applied in view of the risk of explosion. Dispose of used batteries according to the instructions.

For "PoE" input connection, use only with UL listed I.T.E. with "PoE" output. Description for the "PoE" is intended to be connected to not exposed (outside plant) networks or equivalent statement in installation instructions.

Connectors

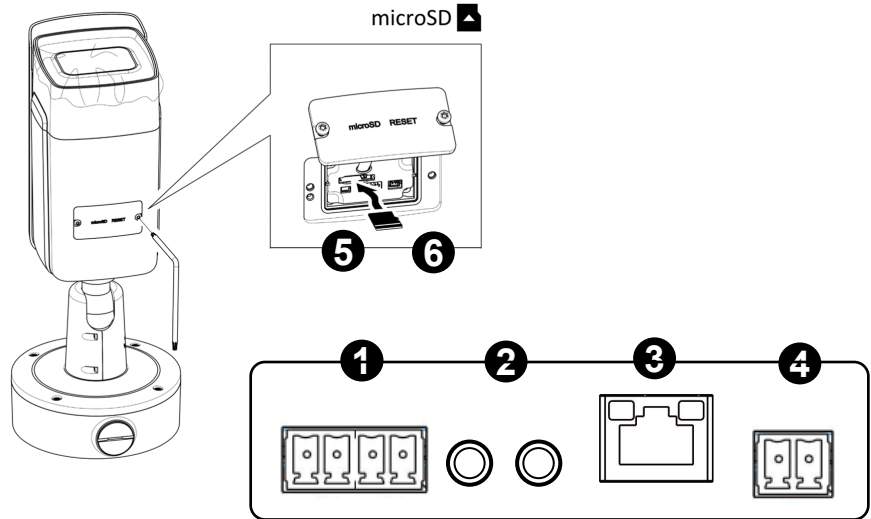


Figure 1 Camera Connectors

Connector Definition

No.	Connector	Definition
1	Alarm I/O	Alarm I/O connection
2	Audio I/O	Line In and Line Out connection
3	RJ-45 Port	For network and PoE connections. Please contact TKH Security for a compatible PoE injector.
4	Power (DC 12V)	Power Connection
5	Micro-SD Card Slot	Insert the SD card into the card slot to store videos and snapshots. Do not remove the SD card when the camera is powered on.
6	Reset Button	To restore camera to factory defaults, power up with Reset button pressed for at least 10s.

Table 1 Connector definition

Camera Cabling

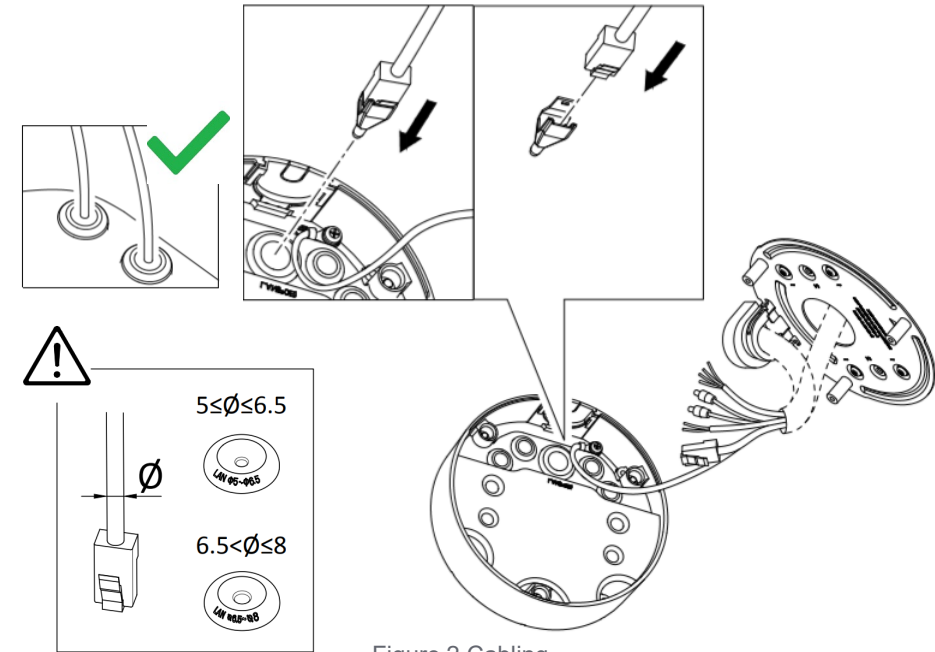


Figure 2 Cabling

Waterproof Notice

Bullet camera is suggested to be mounted either by wall/pole mount or ceiling mount. Other mounting may cause potential water leakage at camera, which is not covered in warranty.

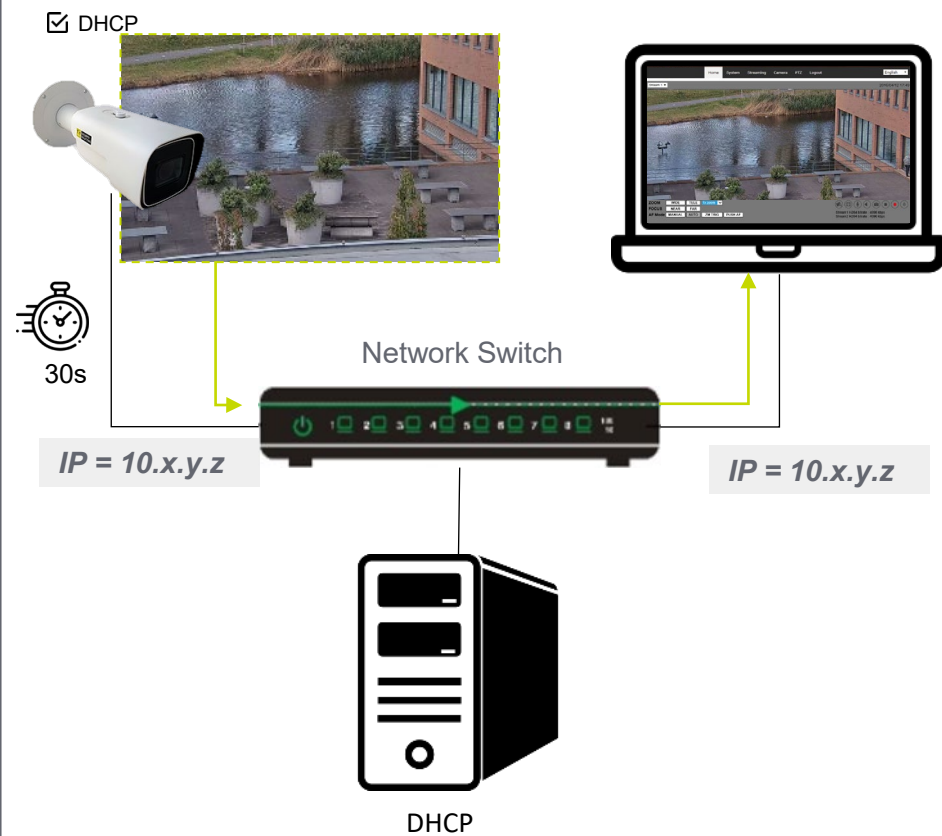


Figure 3 Wall/Pole Mount

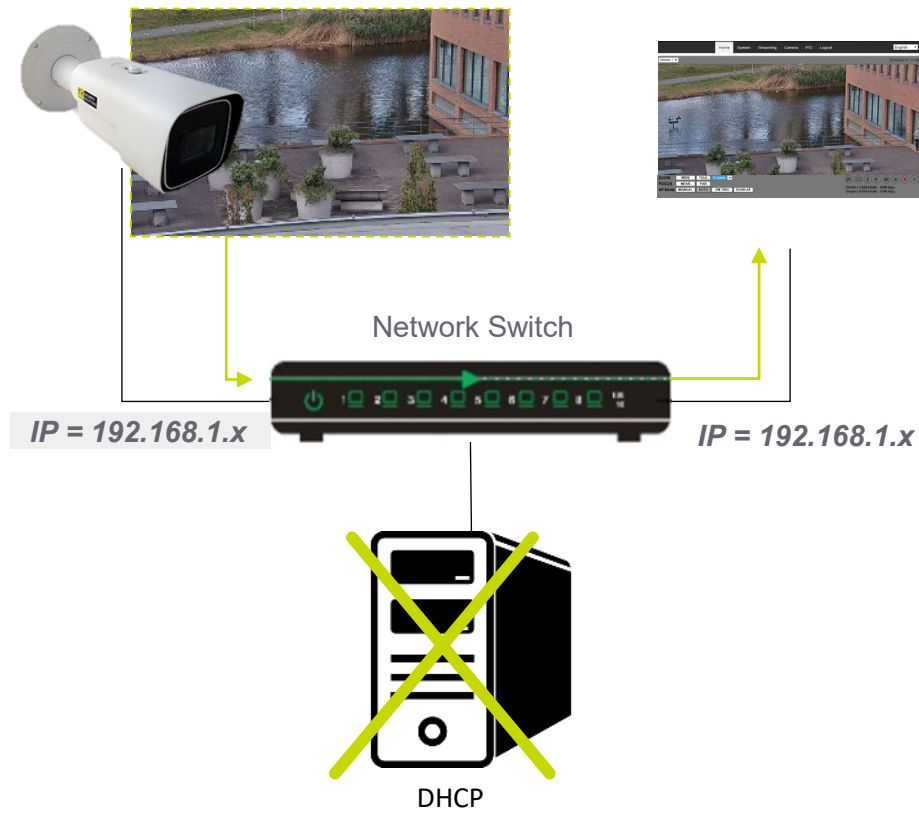


Figure 4 Ceiling Mount

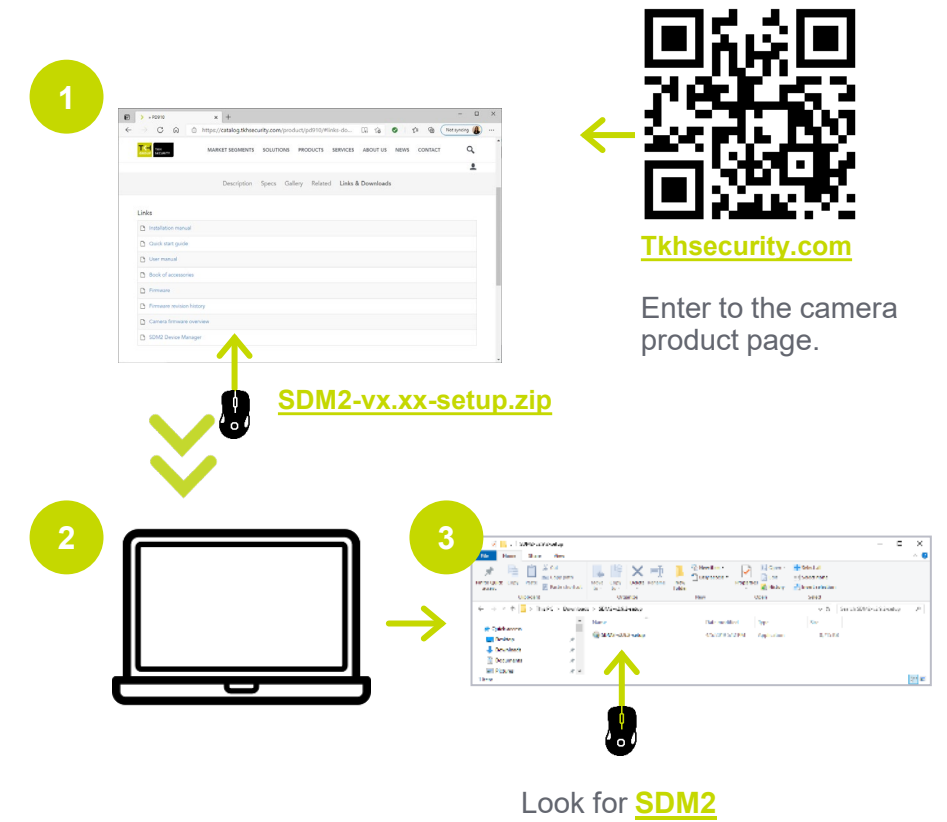
Accessing the Camera - DHCP



Accessing the camera – Fixed IP



Auto detect with SDM2



1st time camera login

Set a strong password

Activation

User Name: admin

Password: [Redacted]

Valid password range [8-16]. You can use a combination of numbers, lowercase, uppercase and special character for your password with at least two kinds of them contained.

Confirm: [Redacted]

OK

qwer1234



x6W@oM0a!9#F



1st time camera login

SIQURA

User Name: [Redacted]

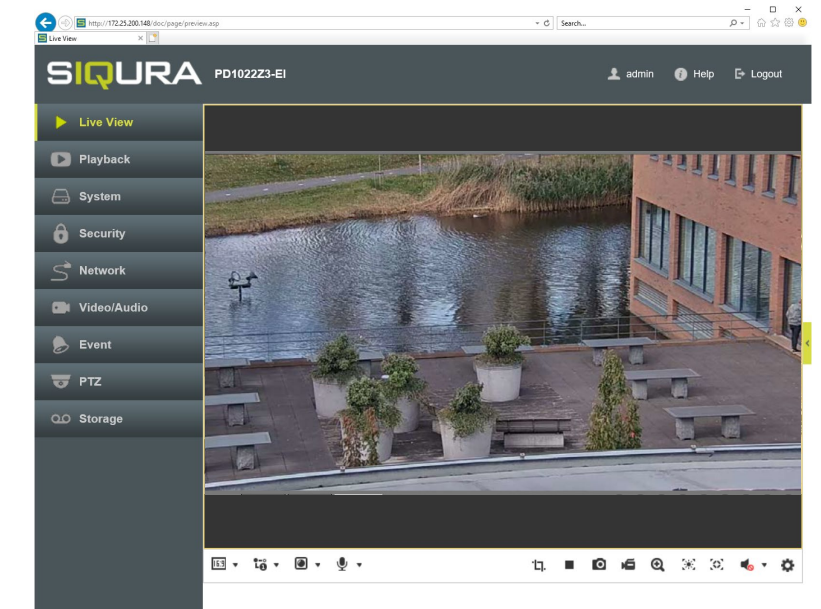
Password: [Redacted]

Language: English

Login

[Forgot password?](#)

Browser-based Viewer



It is not recommended to continuously (24/7) record with the micro-SD card, as the camera may not support long-term continuous data read/write. Contact the manufacturer of the micro-SD card for information regarding the reliability and the life expectancy.