

# Siquira BLI002F4-EI

3 MP Intelligent IP bullet camera with IR

## Quick Start Guide



Find additional manuals for this Siquira product at: [www.siquira.com/support-files](http://www.siquira.com/support-files)

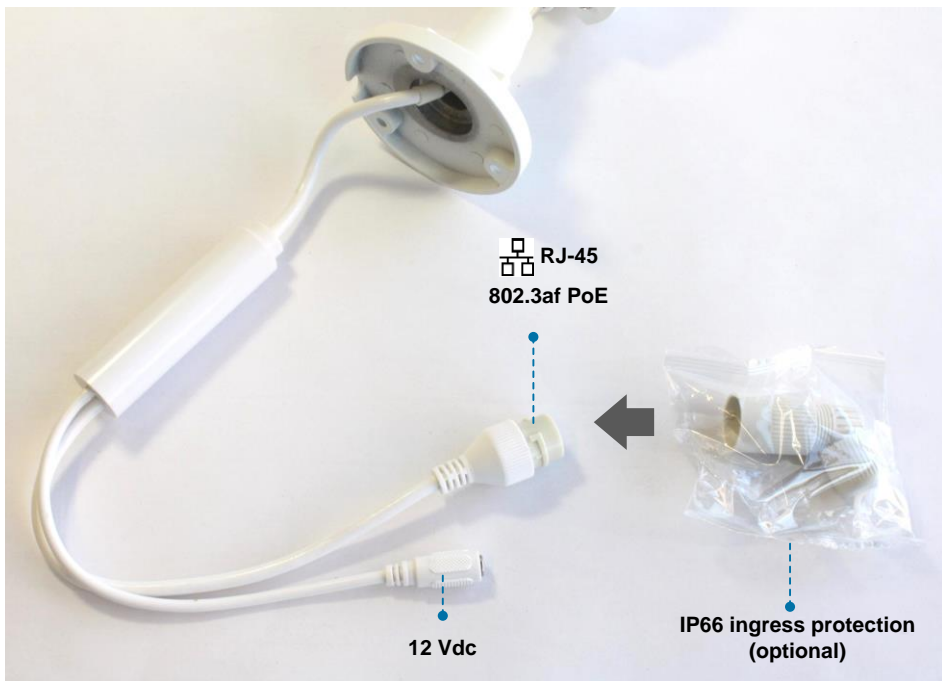


### Unpack

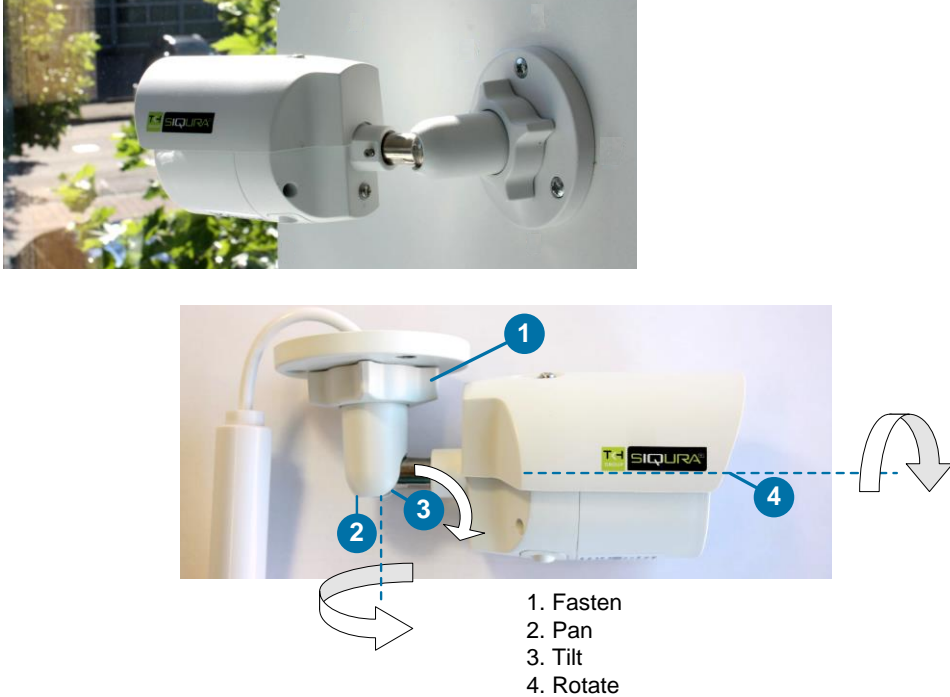


**Note:** Subject to modification. Actual product and accessories may differ in appearance.

### Connect



### Mount and point



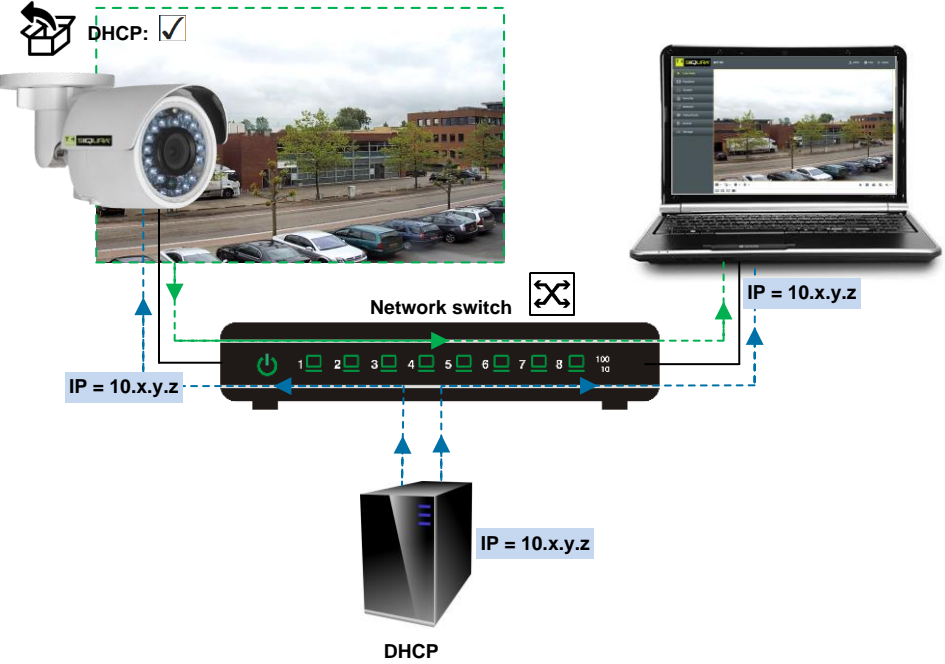
**Note:** For mounting instructions for pole, corner or box mount, see respective manuals.

### Insert Micro SD card / Reset

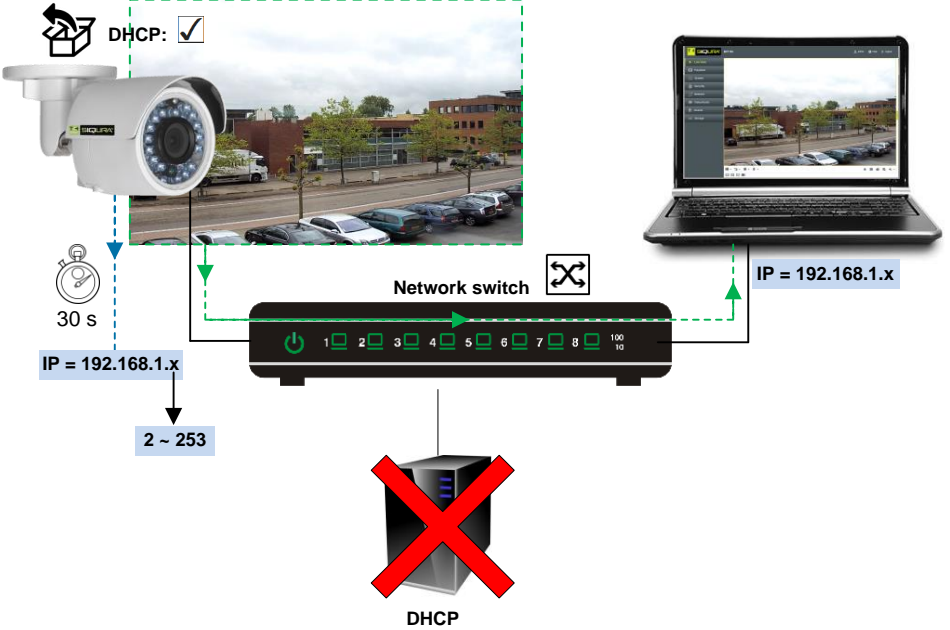


**\*Reset button:** Press and hold for 10 sec. when powering on or rebooting.  
**Warning:** Restores factory default settings, including IP address, user name and password!

### Use DHCP server



### Use fixed IP address



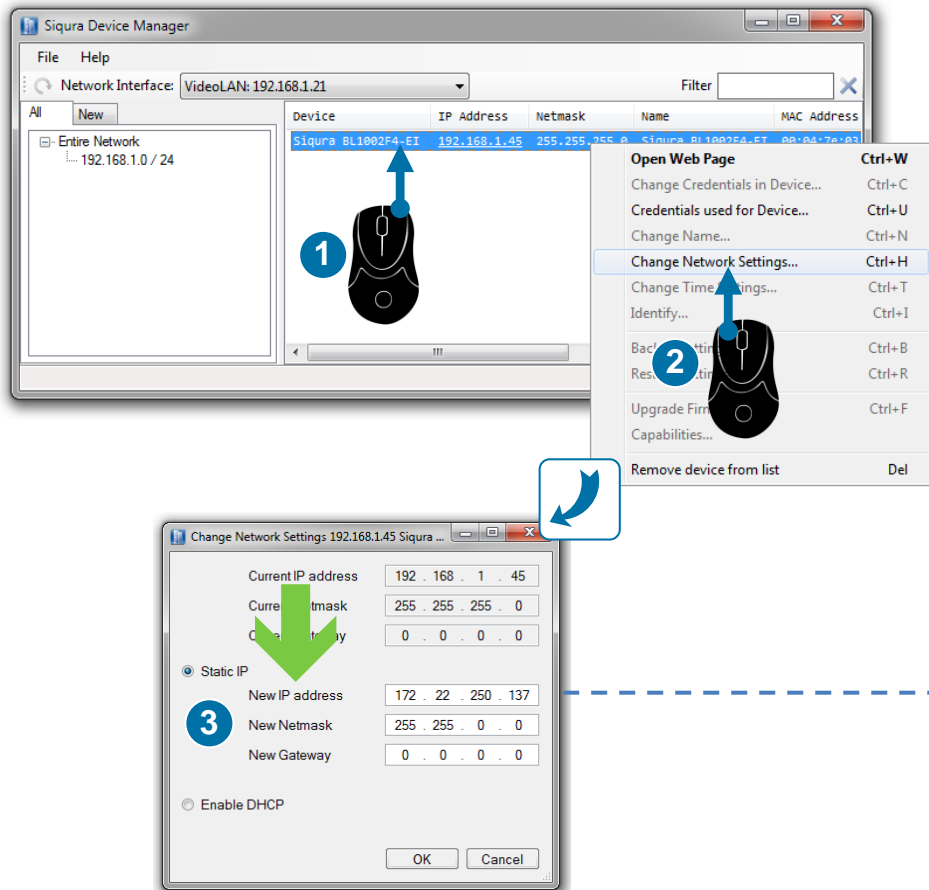
**Note:** Use Siquira Device Manager (see next) to discover the camera on the network.

## Install Siqua Device Manager

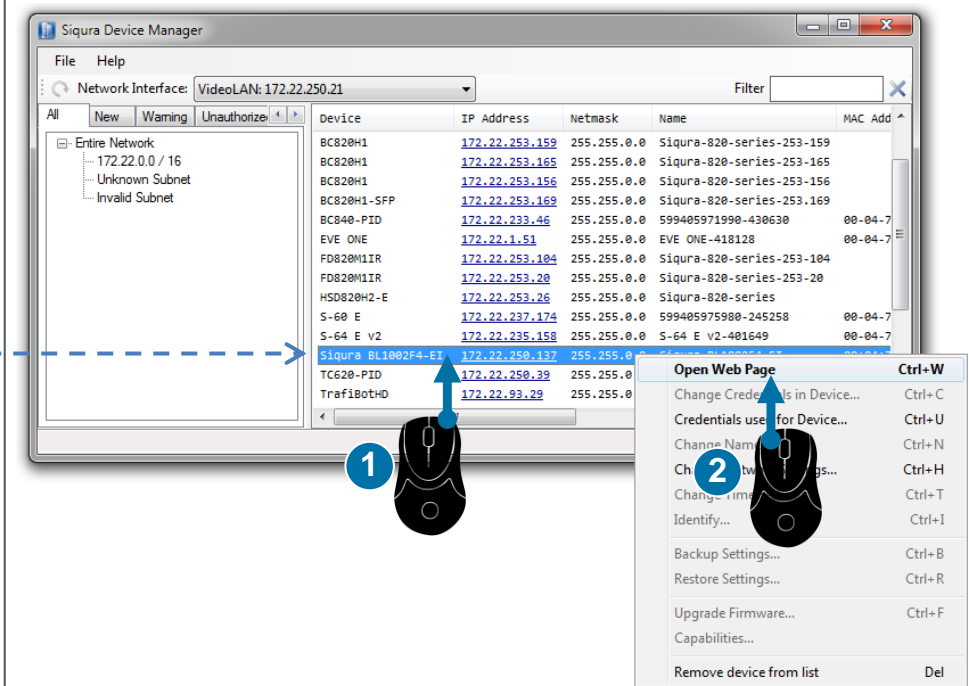


**Important:** Siqua 1002 series cameras require Siqua Device Manager version 1.8.1 or later.  
Replace an existing, older installation of this tool on your PC, if necessary!

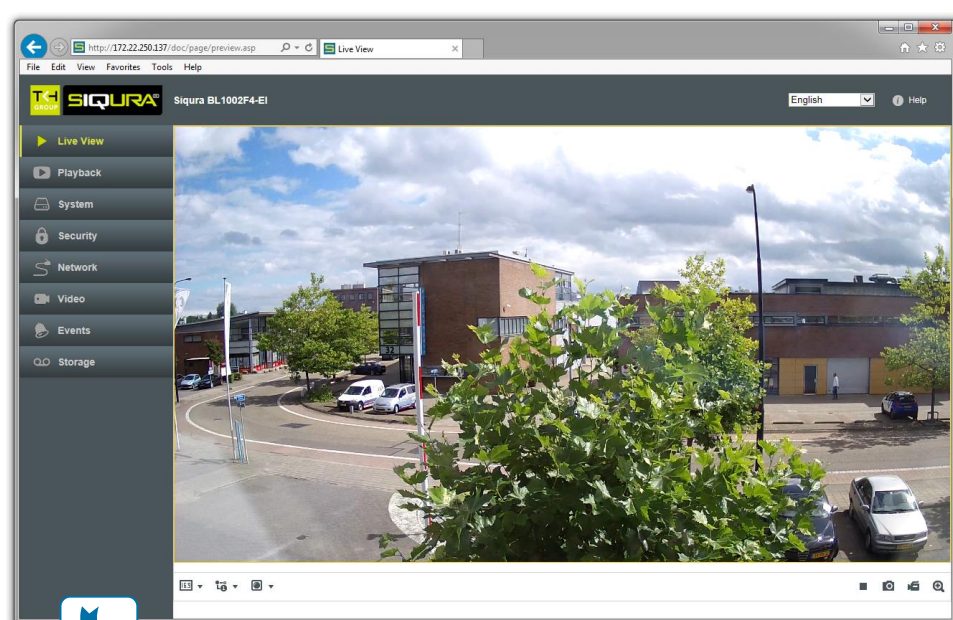
## Change IP address via Siqua Device Manager



## Open web interface via Siqua Device Manager

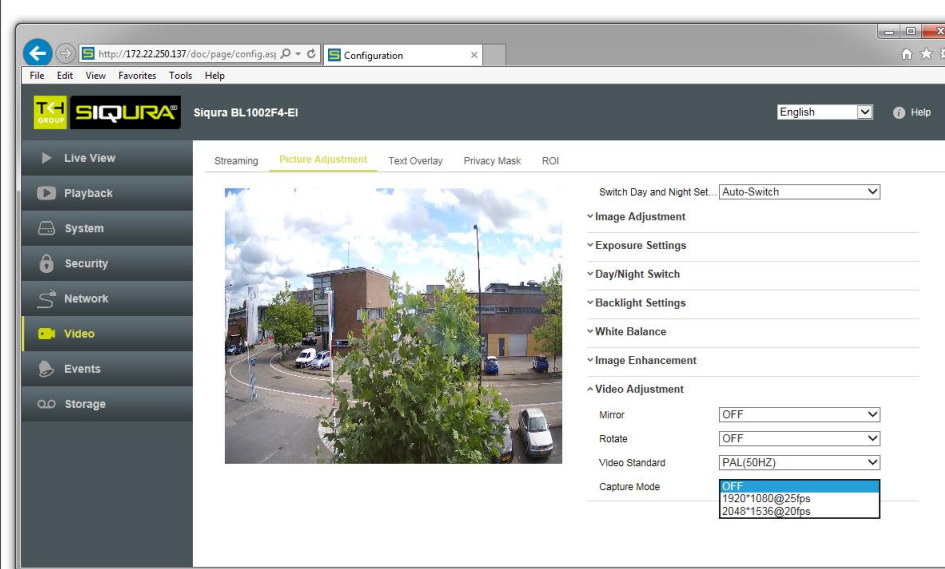


## View live video



Internet Explorer

## Adjust video



## Set up security

