

BC980H2

8MP IP Box Camera, 22x zoom

Quick Start Guide



Find additional manuals, the datasheet, the EU Declaration of Conformity, and the latest firmware for this product at:

tkhsecurity.com



Unpack

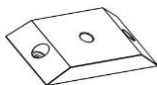


BC980H2

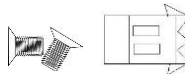
Quick Start Guide



Bracket Adapter



2-pin power terminal block, M3 screws



Subject to modification. Actual product and accessories may differ in appearance.

Installation Notices



CAUTION INSTALLATION SHALL BE PERFORMED BY QUALIFIED PERSONNEL ONLY. INSTALLATION SHALL BE IN ACCORDANCE WITH LOCAL PROCEDURES. THE CAMERA CONTAINS BATTERIES. DO NOT REPLACE IN RISK OF EXPLOSION.



DISPOSE BATTERIES IN ACCORDANCE WITH LOCAL REGULATIONS. IF YOU USE AN EXTERNAL POWER SUPPLY, CONTACT TKH SECURITY TO MAKE SURE THAT THE POWER SUPPLY COMPLIES WITH LPS REQUIREMENTS. .

FOR MORE INFORMATION, CONTACT TKH SECURITY.

Connectors

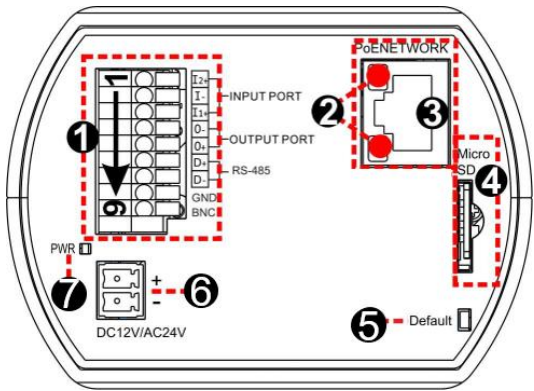


Figure 1 Camera Connectors



IT IS NOT RECOMMENDED TO CONTINUOUSLY (24/7) RECORD WITH THE MICRO SD CARD, AS THE CAMERA MAY NOT SUPPORT LONG-TERM CONTINUOUS DATA READ/WRITE. CONTACT THE MANUFACTURER OF THE MICRO SD CARD FOR INFORMATION REGARDING THE RELIABILITY AND THE LIFE EXPECTANCY.

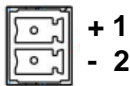
Connector Definition

No.	Connector	Definition
1	Alarm I/O & RS-485	Audio/Alarm I/O & RS-485 connection. Do not connect external power to the alarm I/O connector of the camera.
2	Network LEDs	For network connection and activity indication.
2	RJ-45/PoE	Network and PoE connections. Contact TKH Security for a compatible PoE injector.
3	microSD Card Slot	Insert the microSD card into the card slot to store videos and snapshots. Do not remove the microSD card when the camera is powered on.
4	Reset Button	Press the button with a proper tool for at least 20 seconds to restore the system.
6	Power	DC 12V / AC24V power connector
7	Power LED	Power LED lights up when the camera is powered on.

Table 1 Connector definition

Camera Cabling

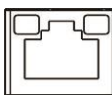
Power Connector (DC 12V)



+ 1
- 2

Pin	Definition
1	DC12V +
2	DC12V -

Table 2 Pin definition for DC12V power connection



- The green link LED is lit when there is a good network connection.
- The orange network LED flashes to indicate that there is network activity.



IN SOME CASES, AN ETHERNET CROSSOVER CABLE MAY BE NEEDED WHEN CONNECTING THE CAMERA DIRECTLY TO THE PC. CHECK THE STATUS OF THE LINK INDICATOR AND THE ACTIVITY INDICATOR LEDs. IF THE LEDs ARE UNLIT, CHECK THE LAN CONNECTION.

Alarm I/O and RS-485 Connection

See the diagram and the pin definition below for the I/O and RS-485 connection.

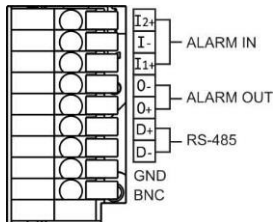
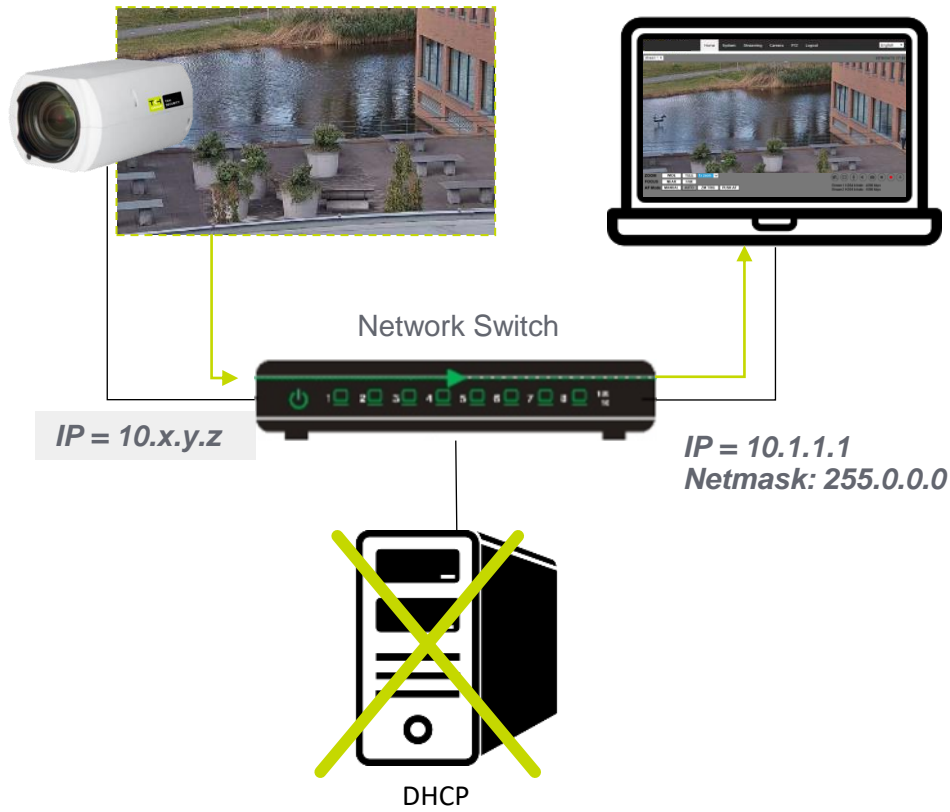


Figure 2 Diagram of Alarm I/O and RS-485 connection pins

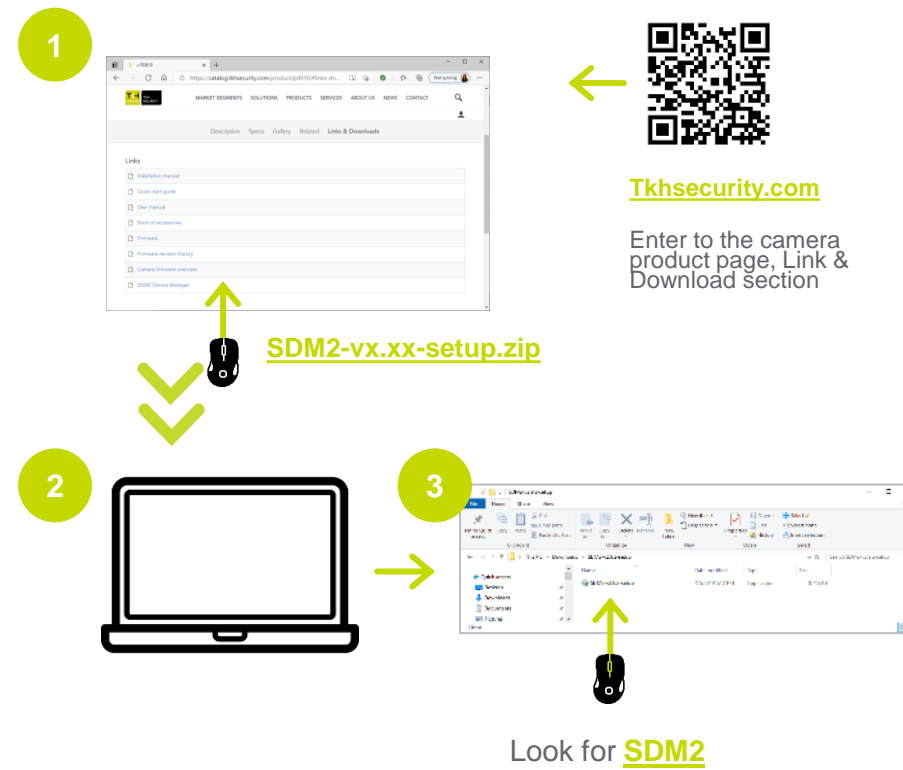
Pin	Definition	Pin	Definition
1	Alarm In 2+	6	RS-485 D+
2	Alarm In -	7	RS-485 D-
3	Alarm In1+	8	GND
4	Alarm Out -	9	BNC
5	Alarm out+		

Table 3 Pin definitions for Alarm I/O and RS-485 connection

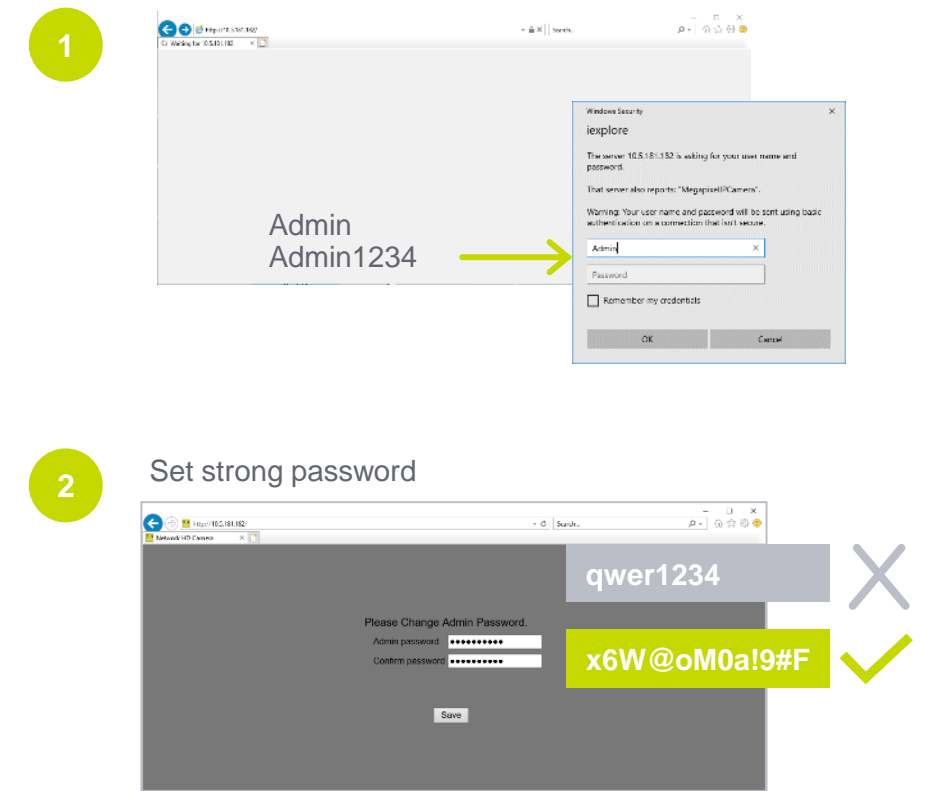
Accessing the UP33



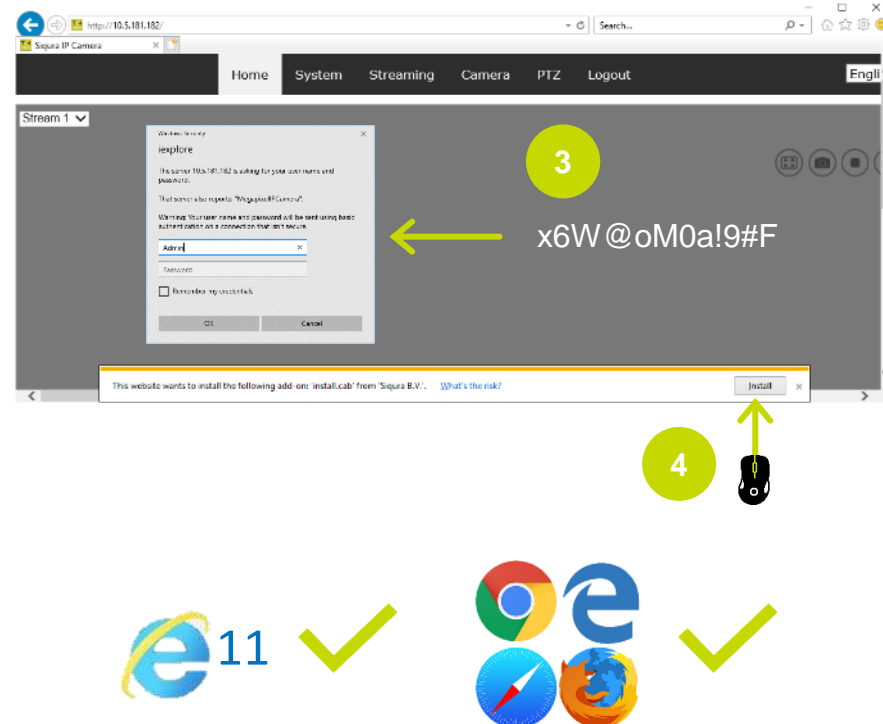
Auto detect with SDM2



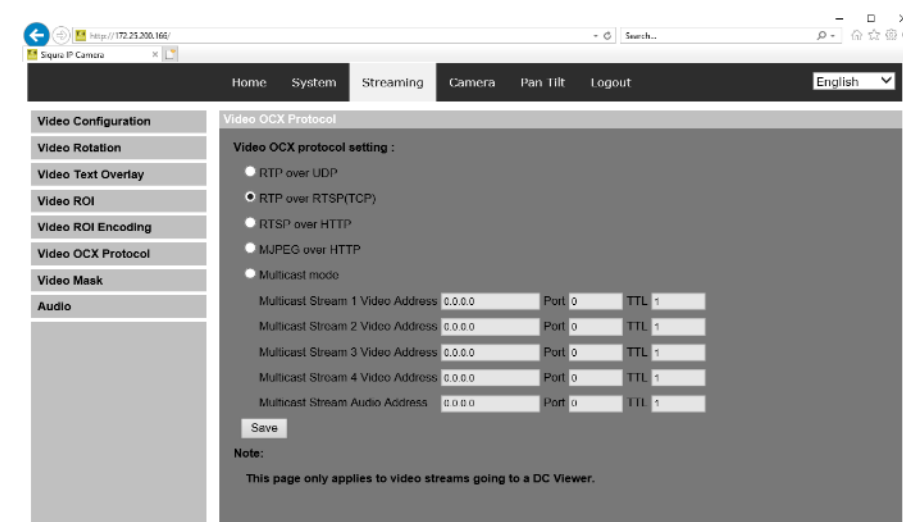
1st time camera login



Install browser-based viewer



Install browser-based viewer



If the web interface is not showing video, you might to open your firewall or set the OCX protocol to RTP-over-RTSP(TCP)

Browser-based Viewer

Figure 4 shows the main page of the IP camera user interface.

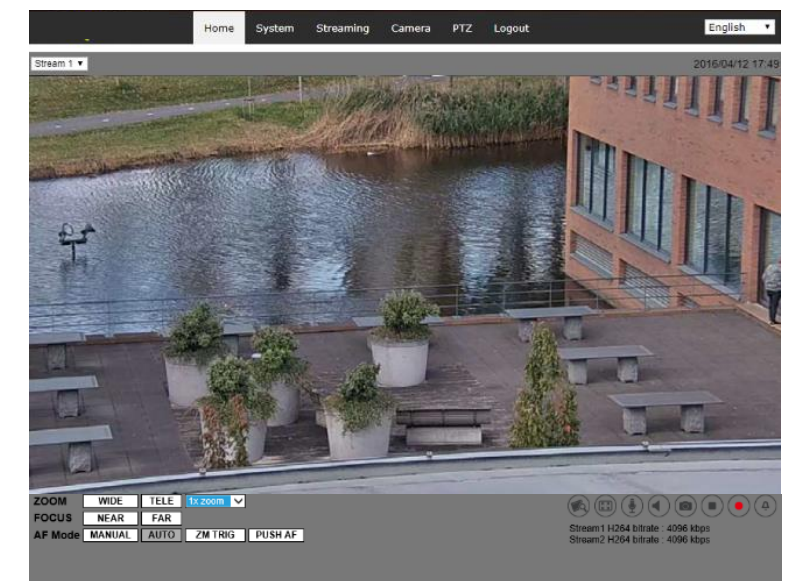


Figure 4 Main page IP camera user interface

Note 1: If the IE web interface is not showing video, you might need to open your firewall or set the OCX protocol to RTP-over-RTSP(TCP).