

BC920

3MP box camera, H.265/H.264/MJPEG, P-iris, SFP

Quick Start Guide



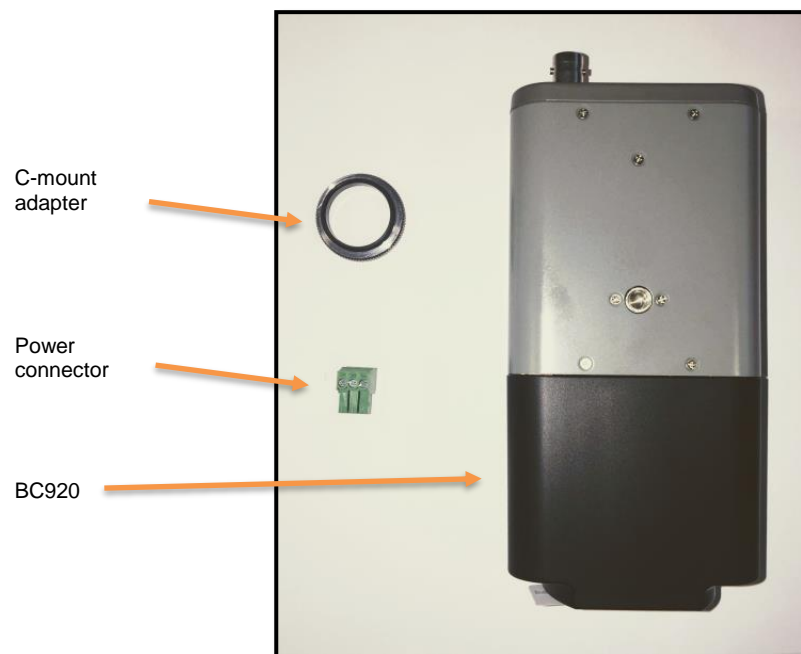
Find the latest information, firmware and documentation at:

siquira.com



SIQURA

Unpack



Note 1: Subject to modification. Actual product and accessories may differ in appearance.

Installation notices



CAUTION:

INSTALLATION SHALL BE PERFORMED BY QUALIFIED PERSONNEL ONLY.

CONNECT POE TO UNEXPOSED NETWORKS.

INSTALLATION SHALL BE IN ACCORDANCE WITH LOCAL PROCEDURES.

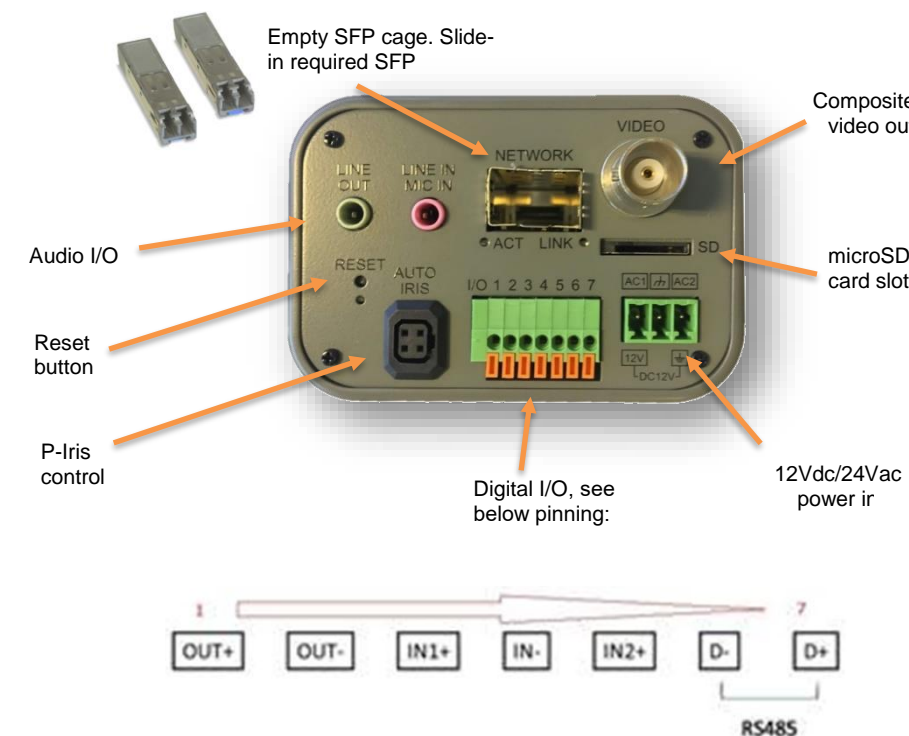
THE CAMERA CONTAINS IRREPLACEABLE BATTERIES, DISPOSE OF THE CAMERA IN ACCORDANCE WITH LOCAL REGULATIONS.

IF YOU USE AN EXTERNAL POWER SUPPLY, CONTACT SIQURA TO MAKE SURE THAT THE POWER SUPPLY HAS THE PROPER POWER SPECIFICATIONS.

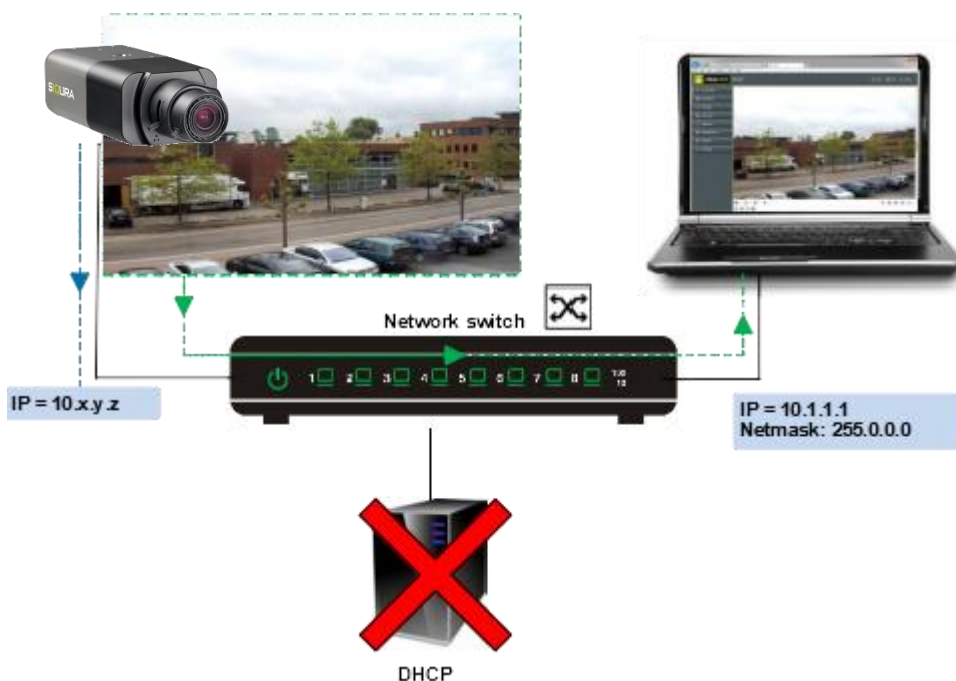
NOTE:

IT IS NOT RECOMMENDED TO CONTINUOUSLY (24/7) RECORD ON THE MICRO SD CARD, AS THE CARD MAY NOT SUPPORT LONG-TERM CONTINUOUS DATA READ/WRITE. CONTACT THE MANUFACTURER OF THE MICRO SD CARD FOR INFORMATION ABOUT THE CARD'S RELIABILITY AND LIFE EXPECTANCY.

Connectors and reset button

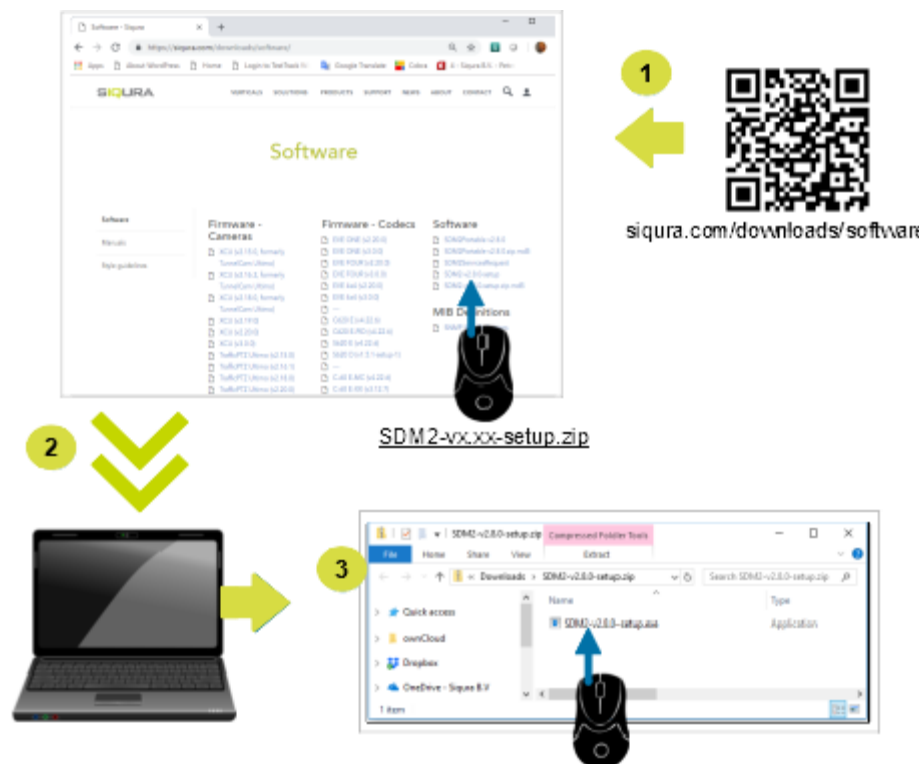


Accessing the camera

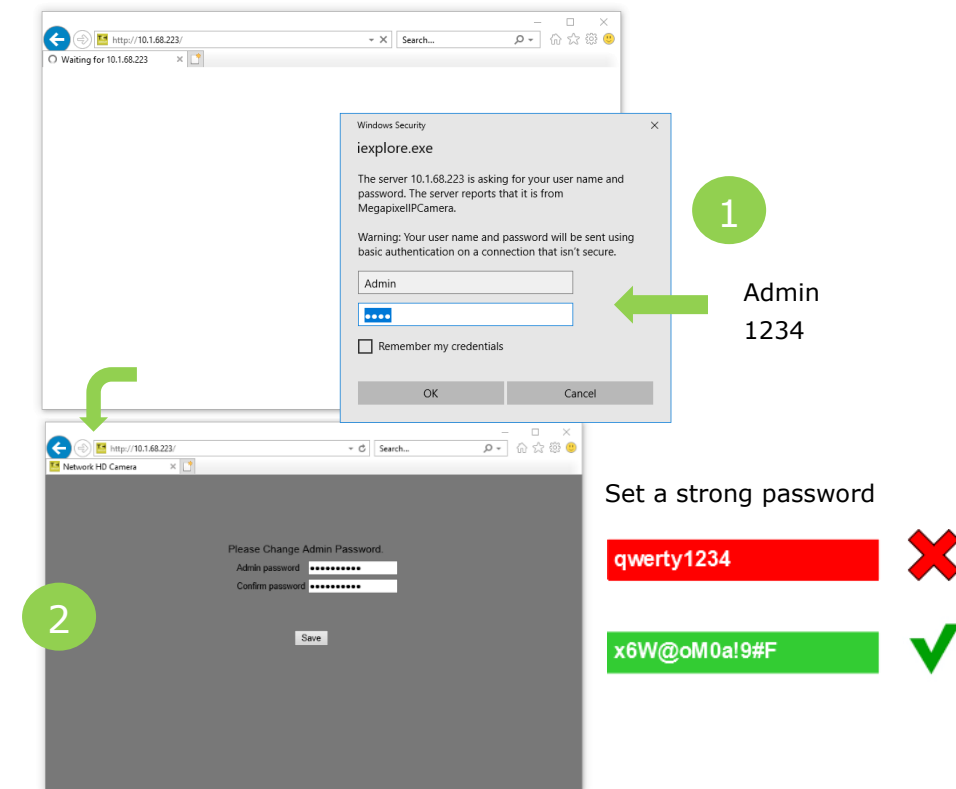


Use Device Manager (see next) to discover the camera on the network.

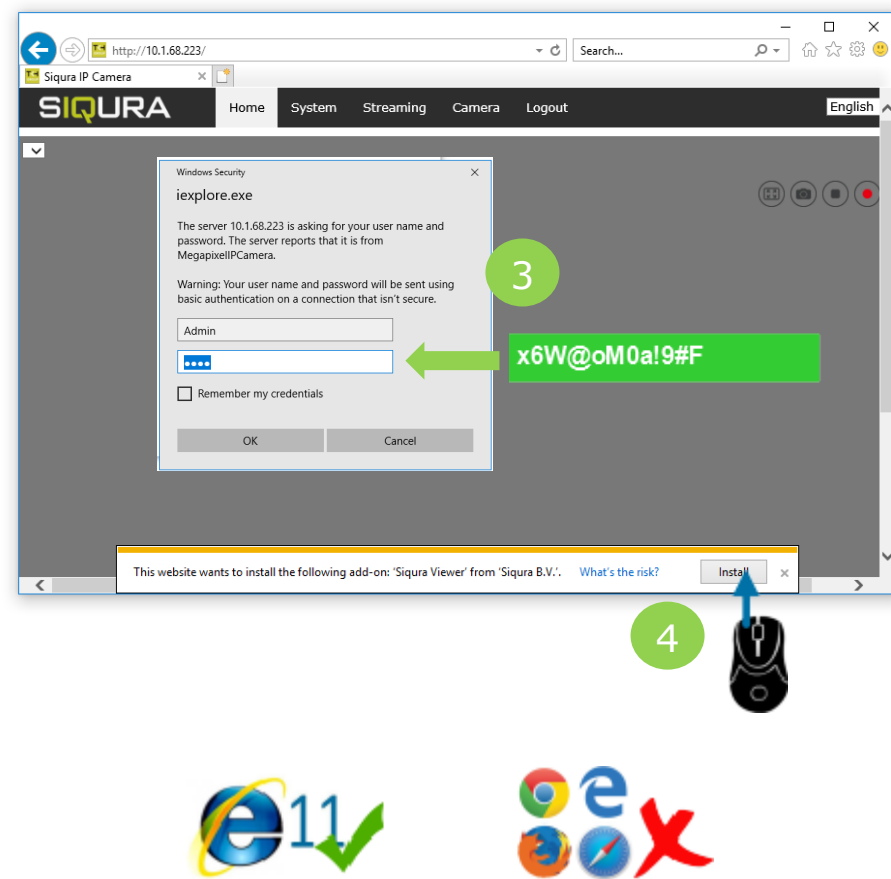
Auto-detect with SDM2



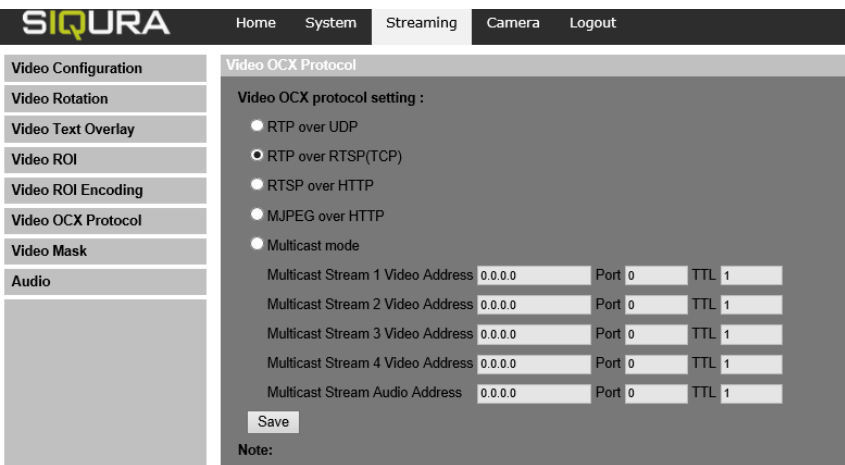
1st time camera login



Install browser-based viewer



Set OCX Protocol



If the IE web interface is not showing video you might need to open your firewall or set the OCX protocol to RTP-over-RTSP(TCP)

Using the Web Viewer

