

Siquira BC820HI Series

HD box camera with integrated optics

Quick Start Guide



Find additional manuals for this Siquira product at: www.siquira.com/support-files



Unpack

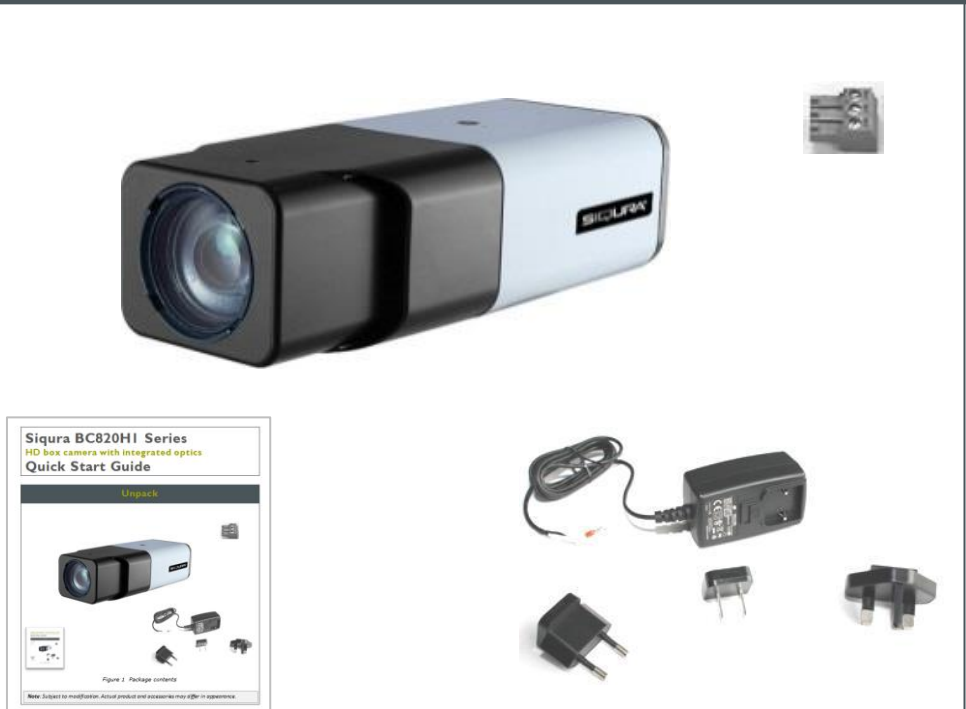


Figure 1 Package contents

Note: Subject to modification. Actual product and accessories may differ in appearance.

Install

Determine where you are going to install the camera.

- Use the Siquira WM04 Wall Bracket sold separately for BC series cameras (figure 2).
- Make sure that the provided surface has sufficient strength to support the camera.
- If using Power over Ethernet (PoE), check that there is adequate access to an IEEE 802.3AF Power Sourcing Equipment (PSE) enabled network



Figure 2 The BC820HI screws onto a mounted wall bracket

Power up / Connect to network (RJ-45)

To power the BC820HI with PoE

- Attach the RJ-45 connector to an appropriate PoE network switch.
- Use Cat 5 Ethernet cable less than 100 m in length. Connect to hub/switch with straight-through; direct to a PC with crossover.

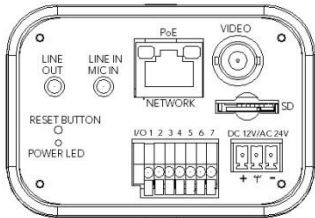


Figure 3 BC820HI rear board connectors

To power the camera with AC 24 V / DC 12 V

- Connect to the DC/AC power source as indicated by the labeling of the terminal block.

+	AC 24 V: Power-1	DC 12 V Power
⏏	AC 24 V: Earth GND	DC 12 V Reserved
-	AC 24 V: Power-2	DC 12 V GND

Table 1
AC 24 V / DC 12 V
connection assignments

Indicator LEDs

- RJ-45 connector LEDs: Green indicates a good network connection; orange verifies network activity.
- Green power LED signifies a good power connection.

To reset the camera to the factory default settings

- With the camera powered up, push and hold the reset button for 30 seconds.

Power up / Connect to network (SFP)

To power the camera with AC 24 V / DC 12 V

- Connect to the DC/AC power source as indicated by the labeling of the terminal block.

+	AC 24 V: Power-1	DC 12 V Power
⏏	AC 24 V: Earth GND	DC 12 V Reserved
-	AC 24 V: Power-2	DC 12 V GND

Table 1
AC 24 V / DC 12 V
connection assignments

To connect the camera to the network

- Slide the XSNet™ SFP modular optical transceiver into the SFP connector (labelled NETWORK) on the rear board of the camera.

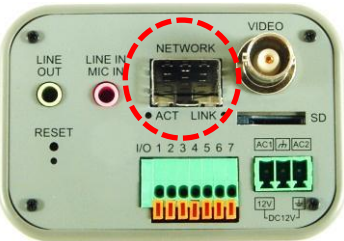


Figure 4 SFP connector on BC820HI-SFP rear board

To reset the camera to the factory default settings

- With the camera powered up, push and hold the reset button for 30 seconds.

Log on

You can access the settings of the camera via its webpages.

Use Internet Explorer 6.x or higher, Chrome, Firefox or Safari to browse the webpages.

To open communication with the BC820HI(-SFP)

1. Make an IP connection between the camera and the PC.
To achieve initial access, the network adapter of the PC must be set to the same subnet as the camera. The factory-set IP address is on a label on the bottom of the camera.
2. Type the IP address of the camera in the address bar of your web browser.
3. Enter the default user name (Admin) and password (1234).
Note that the user name is case sensitive.
4. When prompted by the camera, install the add-on, Siquira Viewer.
5. Enable ActiveX controls.



CAUTION: MAKE SURE THAT YOU CHANGE THE DEFAULT ADMIN PASSWORD AT THE FIRST LOGIN. TO KEEP THE ACCOUNT SAFE, CREATE A STRONG, COMPLEX PASSWORD. THIS HELPS TO PREVENT UNAUTHORISED ACCESS FROM PEOPLE WHO TRY TO USE THE DEFAULT ACCOUNT.



Figure 5 Enter the IP address of the camera into the address bar of your browser

Install Siquira Device Manager (optional)

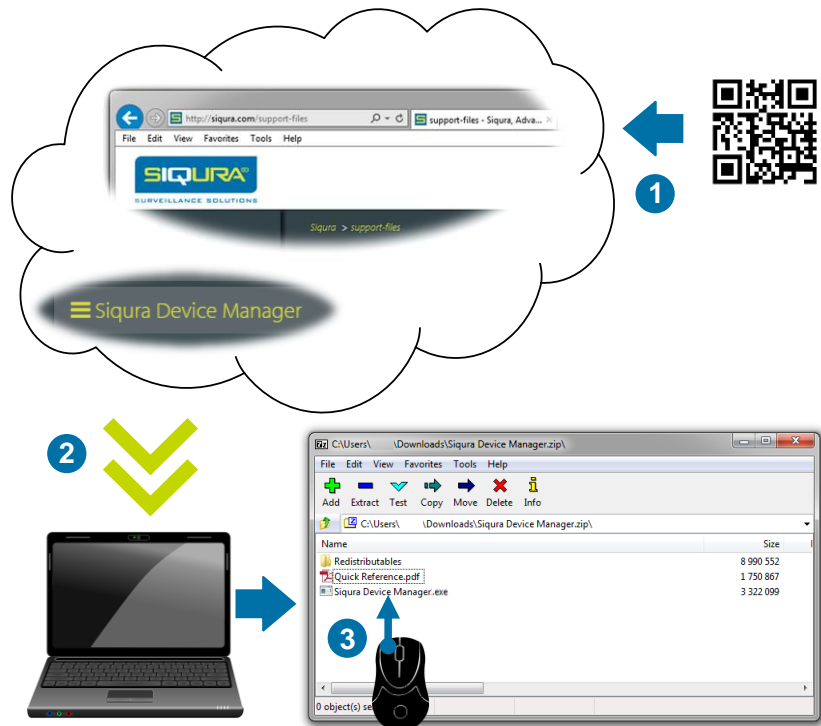


Figure 6 Download Siquira Device Manager at www.siquira.com
Install the software on the browsing PC.

Access via Siquira Device Manager (optional)

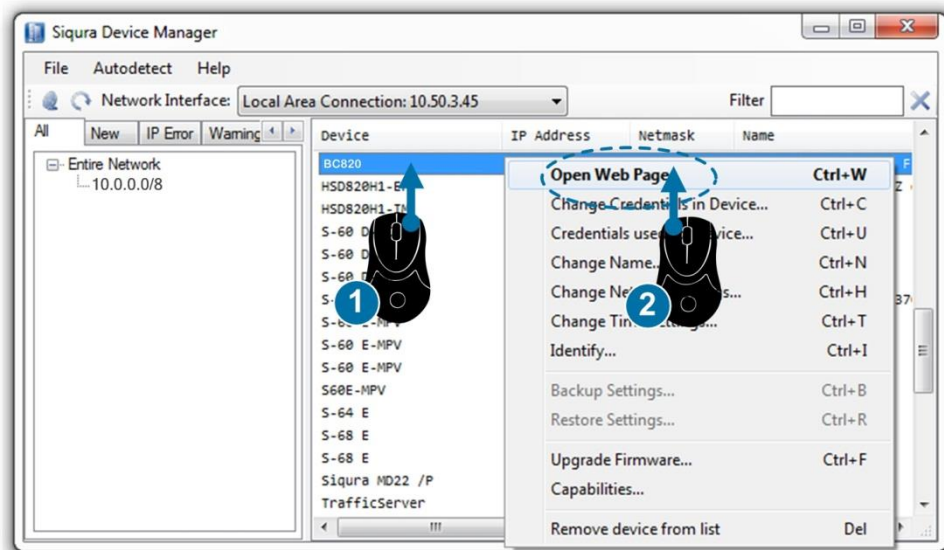


Figure 7 Use Siquira Device Manager to open the webpages of the camera

Change the network settings

With Siquira Device Manager you can directly change the network settings of the camera

To change the network settings

1. Right-click the camera in Siquira Device Manager.
2. Click **Change Network Settings**.
3. Click **Enable DHCP**.
- or -
Click **Static IP**, and then enter the new IP address, subnet mask, and gateway address.
4. Click **OK**.

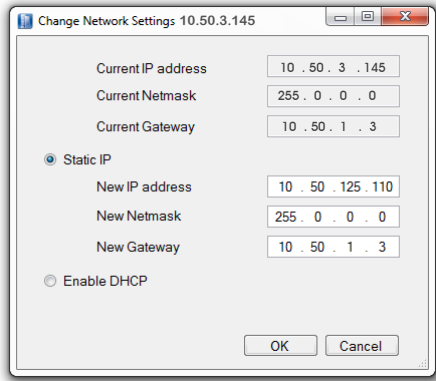


Figure 8 Network settings

Note: A DHCP server must be installed on the network in order to apply DHCP network support.

You can also change these settings on the Network webpage of the camera. For more information, see the User Manual.

Navigate the webpages

Across the top of the BL820 home page are six main menu items.

- **Home**
Here you can monitor a live video stream or double-click the image to view stream details.
- **System**
Here you can set the host name, system time, root password, and other network related settings.
- **Streaming**
Here you can set video and audio formats and compression parameters.
- **Camera**
Here you can adjust various camera settings, including exposure, white balance, brightness, sharpness, contrast, and digital zoom.
- **Pan Tilt**
With a Pan Tilt head properly connected to the RS-485 port of the camera, the user can drag the pointer across the camera view in the webpages for pan/tilt camera control.
- **Logout**
The Logout option signs the user out of the camera's webpages and opens the Login page.

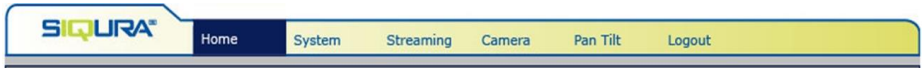


Figure 9 The BC820H1 web interface menus

Rotate camera image

Depending on how BC820H1 camera is mounted, you may need to rotate the camera image.



Figure 10 Applying Mirror video rotation

To select a video rotation type

1. On the Streaming tab, click to select **Video Format** from the menu options on the left.
2. Choose one of the following video rotation types:
 - **Normal video.** The camera's orientation is not modified.
 - **Flip video.** The image rotates across the horizontal axis.
 - **Mirror video.** The image rotates across the vertical axis.
 - **90 degree clockwise.** The image rotates 90° clockwise.
 - **180 degree rotate.** The image rotates 180°.
 - **90 degree counterclockwise.** The image rotates 90° counterclockwise.
3. Click **Save** to confirm settings.

Connect audio

If microphones and speakers are implemented, the camera can be used to provide a two-way audio channel.

Step 1: Connect the audio input and output cables to the LINE IN and LINE OUT connectors on the back of the camera.



Figure 11 Audio in and out connectors.

Step 2: In the camera webpages, go to **Streaming > Audio** and select one of the following options:

- **Full-duplex** – Audio can be transmitted and received at the same time. Local and remote sites can communicate with each other simultaneously.
- **Half-duplex** – Audio can be either transmitted or received. One site can talk or listen to the other site in turn.
- **Simplex (Talk only)** – Audio can be transmitted. One site can speak to the other site.
- **Simplex (Listen only)** – Audio can be received. One site can listen to the other site.
- **Disable** – The audio transmission function is turned off.

Set up alarms

Connecting an alarm device, such as a sensor, to the BC820H1 camera input can trigger an output action to occur based on digital I/O settings. A motion detection or tampering alarm can also trigger an output action.

Step 1: Connect the alarm relay connectors to the I/O terminal block on the back of the camera.

Step 2: In the camera webpages, go to the **System** tab. Using the **Application**, **Motion Detection**, and **Tampering** pages, configure the alarms as desired.

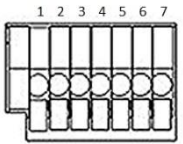
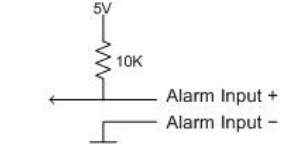
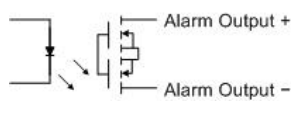
Pin definitions	Equivalent circuits	Output specification
		<ul style="list-style-type: none">• Solid state relay MOSFET output• Absolute MAX voltage: 300 V AC/DC
<ol style="list-style-type: none">1. Output+2. Output-3. Input+4. Input-5. GND6. RS-485 D-7. RS-485 D+		<ul style="list-style-type: none">• ON-Resistance: MAX 30 Ω• MAX Load Current: 100 mA• OFF Leakage Current: 1 uA

Table 2 Alarm definitions