

# Siqura BC620 Series

Dual H.264 IP box camera

## Quick Start Guide



### Unpack

**Note:** Lens not included

Siqura BC620 Series  
Dual H.264 IP box camera  
Quick Start Guide

Unpack

Note: Lens not included

Supporting documents and software

**Note:** Subject to modification. Actual product and accessories may differ in appearance.

### Familiarise with back panel

Reset button\*

SFP model

Digital I/O

RS-422/485

CC

DATA

12VDC

802.3af PoE

11-30 Vdc

20-30 Vac

24VAC

POE

FOCUS ASSIST

AUDIO IN

AUDIO OUT

µSD

32 GB max

SYNC

PWR

\*Press and hold for 10 sec. to reset to factory defaults (incl. network settings)

### Connect cabling



### Mount camera

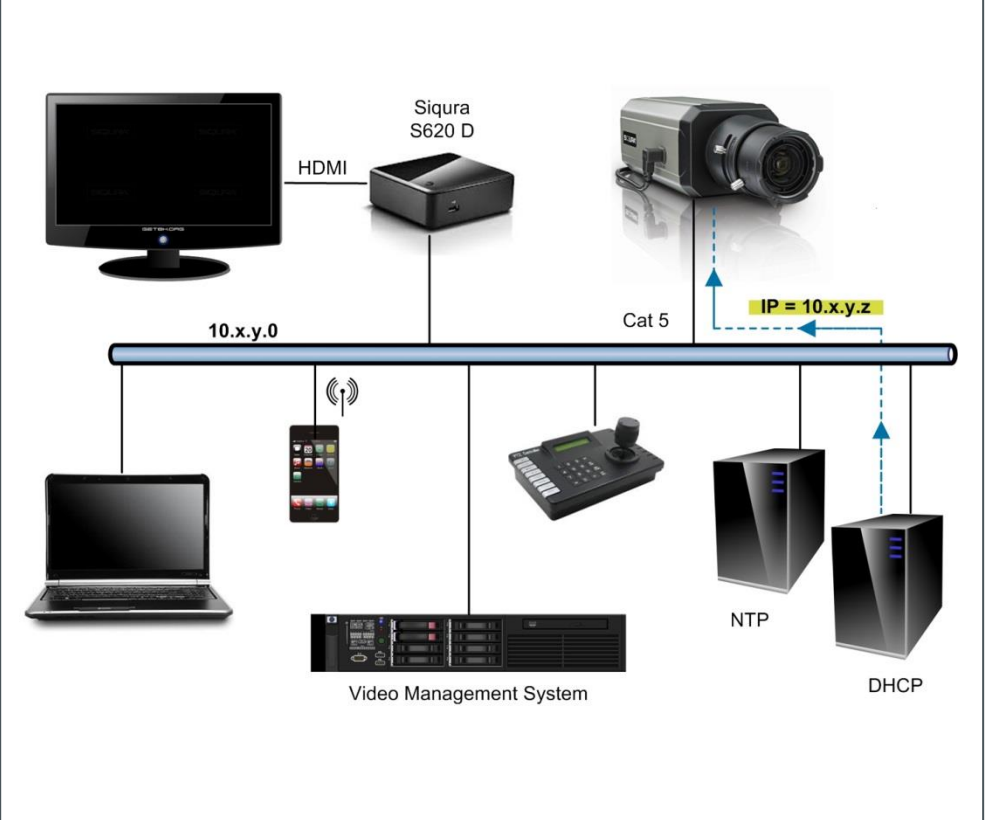
HSG02LV/HSG03LV

HSG/Wall

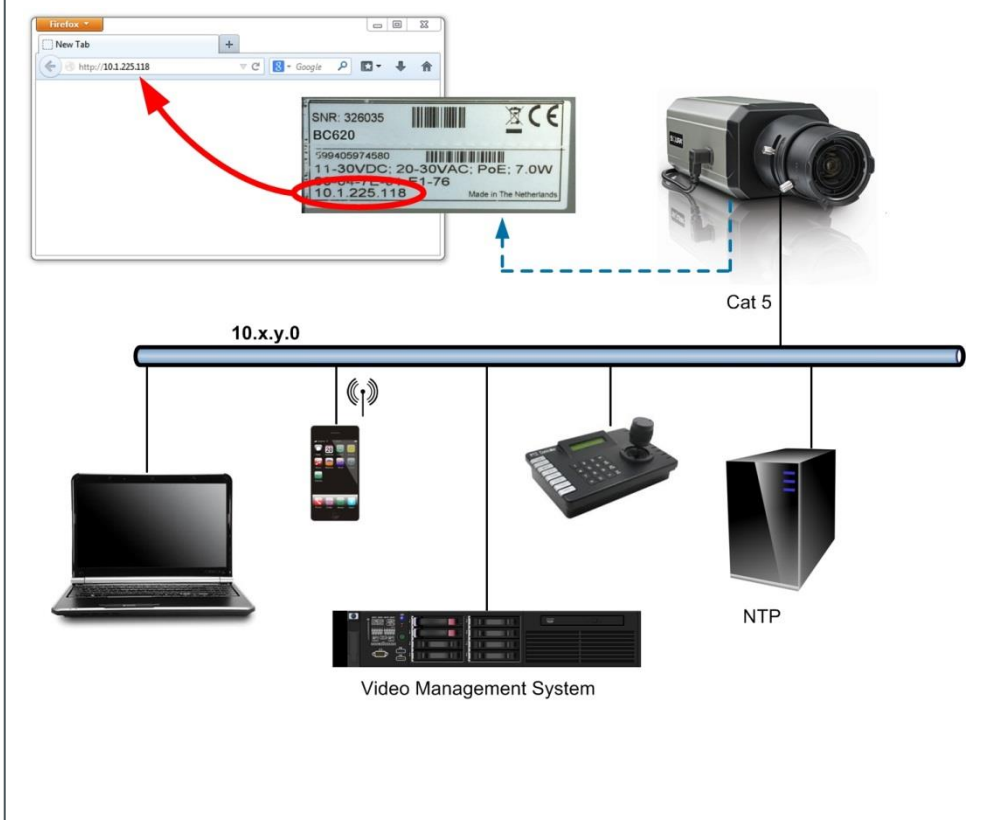
HSG/Ceiling

WM04

### Assign IP address via DHCP ...

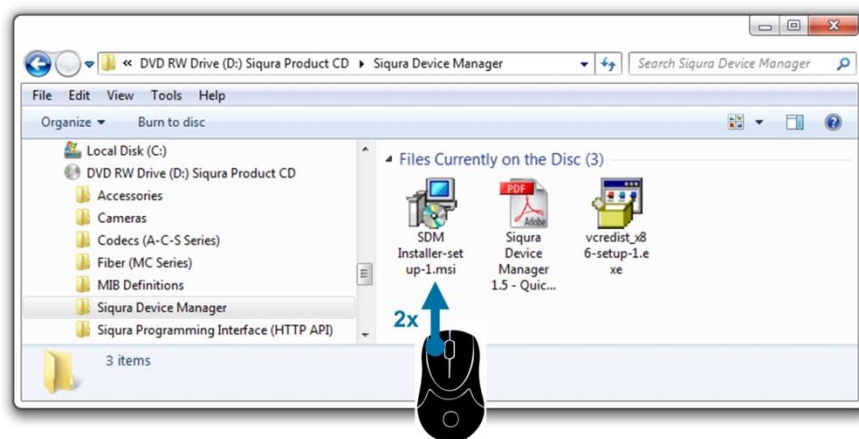


### ... or use factory-set IP address (optional)

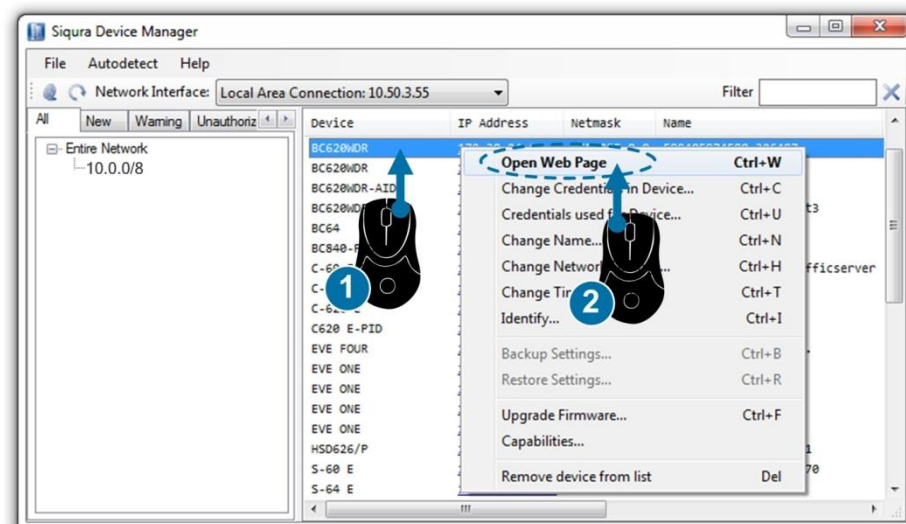




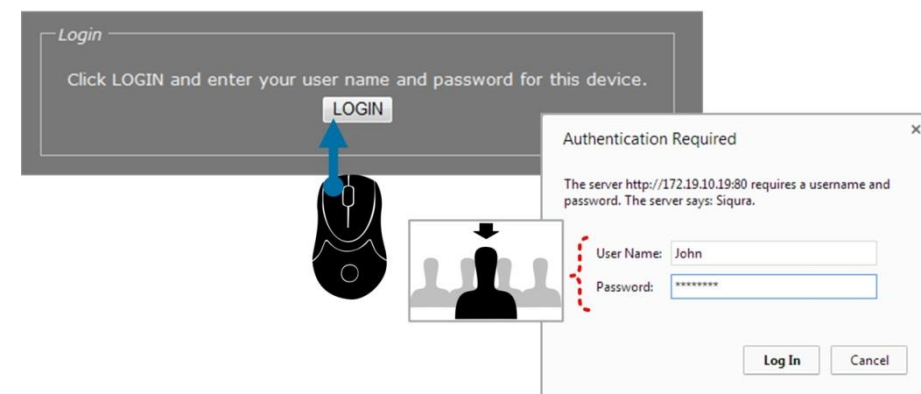
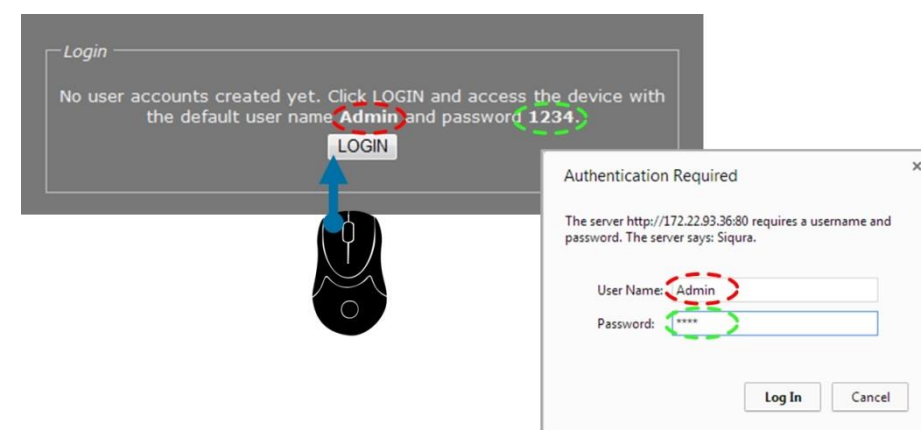
## Install Siqura Device Manager (optional)



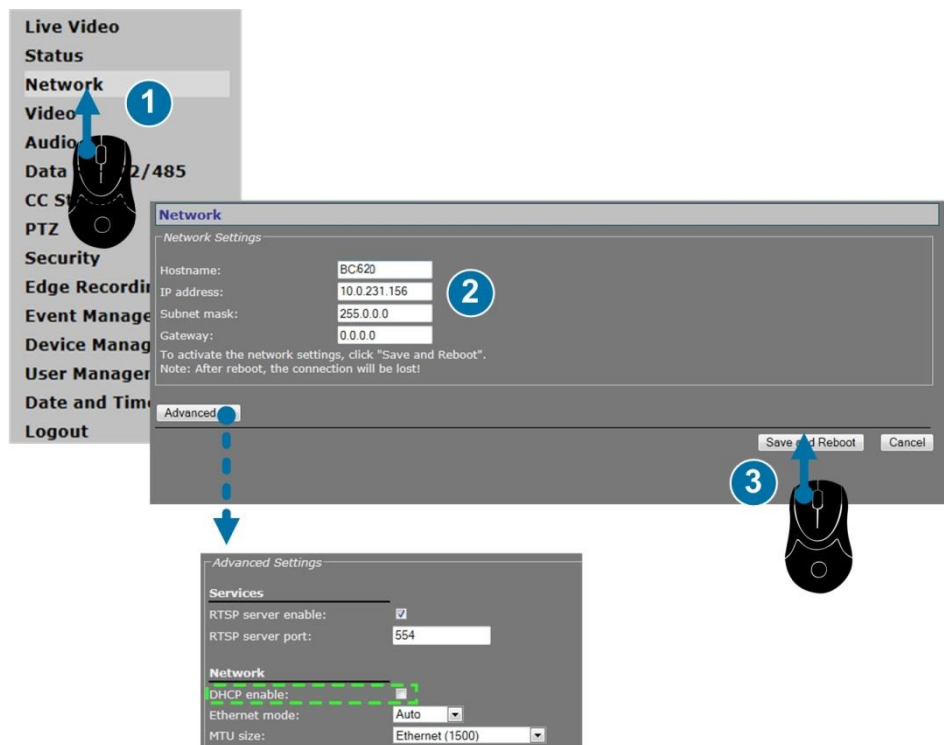
## Access via Siqura Device Manager (optional)



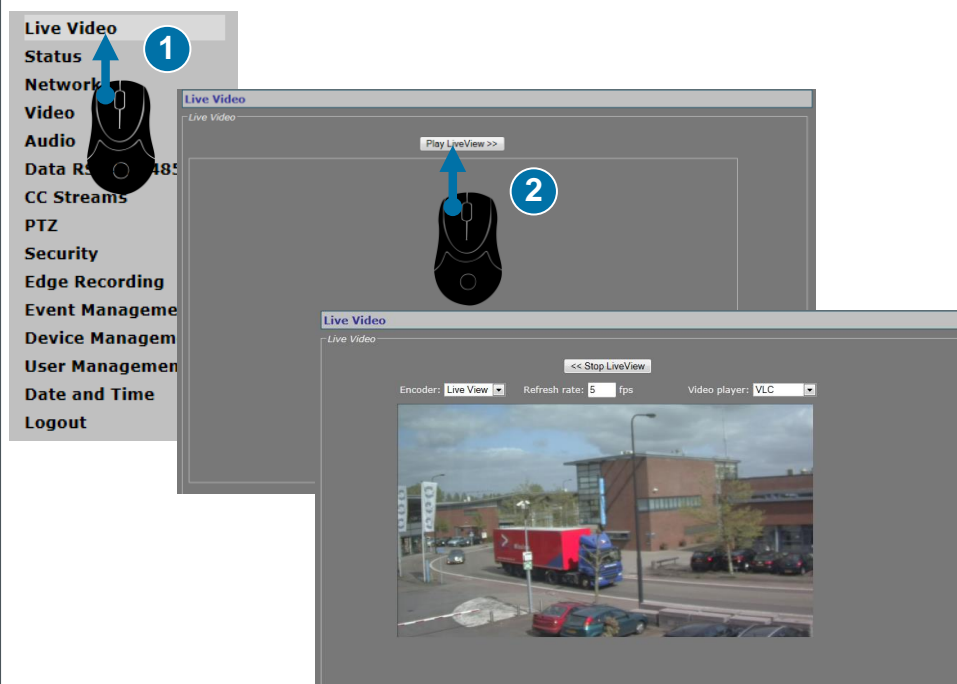
## Log on to camera webpages



## Change network settings



## View live video via browser



## View video stream in video player

